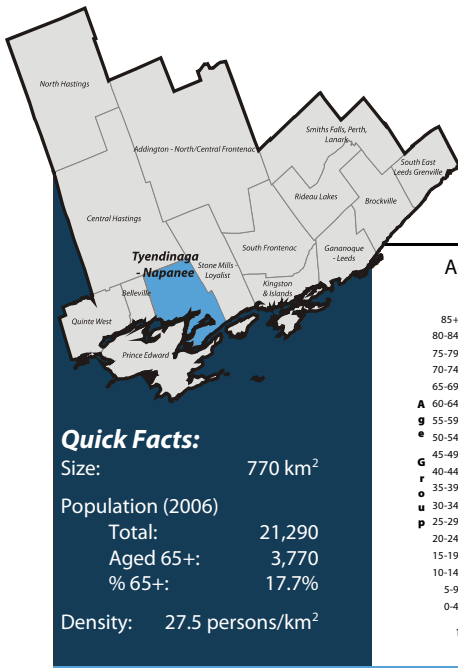


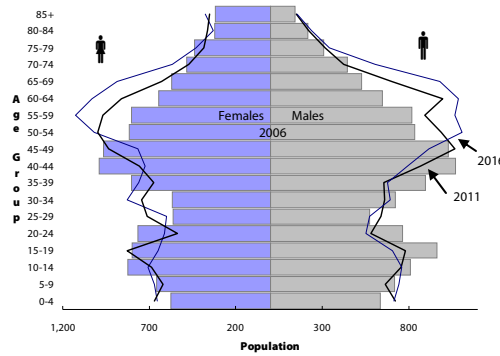
# South East Local Health Integration Network (LHIN) Sub-LHIN Planning Area Profile: Tyendinaga, Napanee



## Quick Facts:

Size: 770 km<sup>2</sup>  
 Population (2006)  
 Total: 21,290  
 Aged 65+: 3,770  
 % 65+: 17.7%  
 Density: 27.5 persons/km<sup>2</sup>

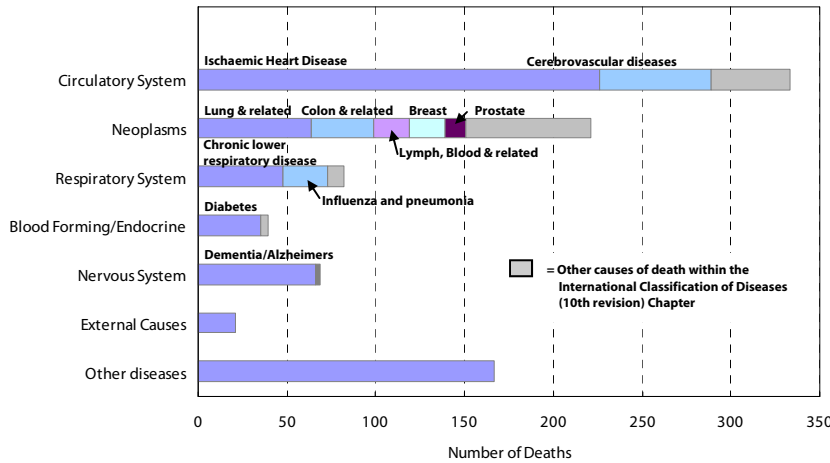
Age Distribution, 2006, 2011 and 2016 (projected)



## Demography

Year	Tyendinaga Napanee	South East LHIN		Ontario		
		Tyendinaga Napanee	South East LHIN	Tyendinaga Napanee	South East LHIN	Ontario
<b>Population Counts</b>						
Total Population						
2006	24,021	482,078	12,705,344			
2009	24,208	486,101	13,050,754			
2011	24,283	492,452	13,349,125			
2016	25,442	510,626	14,149,965			
<b>Percentage of Total Population</b>						
Aged 65+						
2006	3,765	80,630	1,649,293	15.7%	16.7%	13.0%
2009	3,913	86,097	1,770,571	16.2%	17.7%	13.6%
2011	4,018	90,168	1,864,941	16.5%	18.3%	14.0%
2016	4,904	105,224	2,214,279	19.3%	20.6%	15.6%
Aged 75+						
2006	1,740	37,269	781,257	7.2%	7.7%	6.1%
2009	1,770	38,990	837,672	7.3%	8.0%	6.4%
2011	1,789	40,324	871,594	7.4%	8.2%	6.5%
2016	1,864	44,307	959,871	7.3%	8.7%	6.8%
Aged 85+						
2006	459	9,648	192,104	1.9%	2.0%	1.5%
2009	479	10,718	228,156	2.0%	2.2%	1.7%
2011	500	11,302	249,961	2.1%	2.3%	1.9%
2016	529	12,494	294,008	2.1%	2.4%	2.1%

Leading Causes of Death in the Sub-LHIN Planning area, 2001-2004



## Census Characteristics

	Tyendinaga Napanee	South East LHIN	Ontario
No certificate, degree or diploma (age 25+)	24.9%	20.0%	18.7%
Completed post-secondary education (age 25+)	44.6%	53.4%	56.8%
Unemployment rate (age 15+)	5.6%	6.2%	6.4%
Labour force participation rate (age 15+)	64.2%	62.4%	67.1%
Proportion of population living in low income	11.0%	11.9%	14.7%
English Mother tongue	95.0%	91.5%	69.8%
French Mother tongue	1.6%	2.7%	4.4%
Immigrants	5.2%	9.3%	28.3%
Recent Immigrants (5 years)	0.2%	0.8%	4.8%
Visible minorities	1.2%	3.3%	22.8%
Aboriginal Identity	4.3%	2.8%	2.0%

## Health Status

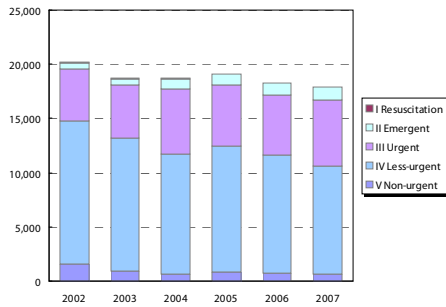
	Kingston, Frontenac and Lennox & Addington Public Health <sup>1</sup>				South East LHIN				Ontario			
	Total Population		Aged 65 and Older		Total Population		Aged 65 and Older		Total Population		Aged 65 and Older	
<b>Overall Health Status</b>												
Self-rated Health: Very Good or Excellent	57.1	(51.5 - 62.6)	46.4	(35.9 - 57)	54.2	(50.4 - 58)	40.5	(34.5 - 46.5)	59.9	(58.9 - 60.9)	37.9	(35.9 - 40)
Activity Limitation	41.3	(36.2 - 46.3)	59.1	(48.6 - 69.6)	43.6	(40.3 - 46.9)	62.7	(56.2 - 69.1)	33.5	(32.6 - 34.4)	59.1	(57 - 61.3)
<b>Use of Preventive Care</b>												
Received Flu Shot In Past Year	46.0	(40.9 - 51.1)	81.4	(73.7 - 89.1)	46.9	(43.1 - 50.7)	70.3	(64.1 - 76.6)	35.9	(35 - 36.8)	70.1	(68.2 - 72)
Contact With Medical Doctor In Past Year	83.6	(79.7 - 87.5)	93.1	(88.4 - 97.9)	80.8	(78.2 - 83.4)	91.6	(88.3 - 94.9)	81.4	(80.6 - 82.2)	90.5	(89.4 - 91.7)
<b>Health Practices</b>												
Daily Smokers	22.8	(17.8 - 27.8)	--		22.3	(19.3 - 25.4)	11.4*	(7.6 - 15.2)	16.3	(15.6 - 17)	7.7	(6.7 - 8.8)
Exposed To Second Hand Smoke In Home	10.4	(5.1 - 15.7)	--		11.7	(8.6 - 14.7)	--		6.1	(5.6 - 6.6)	4.6	(3.5 - 5.6)
Heavy Alcohol Consumption	21.0	(16.2 - 25.8)	--		22.1	(18.6 - 25.6)	7.5*	(3.6 - 11.5)	21.7	(20.8 - 22.6)	7.1	(5.7 - 8.5)
Obese Or Overweight	52.5	(46.2 - 58.9)	51.6	(41.5 - 61.7)	53.8	(49.8 - 57.8)	54.7	(48.3 - 61)	49.6	(48.6 - 50.6)	53.4	(51.3 - 55.6)
Physically Inactive	45.3	(39.8 - 50.9)	49.6	(39.5 - 59.7)	44.5	(41 - 48.1)	53.3	(47 - 59.7)	49.0	(48 - 50.1)	54.2	(52.2 - 56.3)
Consumes Fruits / Vegetables 5+ Times A Day	42.3	(37.2 - 47.4)	51.6	(39.4 - 63.9)	42.8	(39.3 - 46.3)	49.0	(42.3 - 55.6)	39.7	(38.7 - 40.8)	41.6	(39.4 - 43.7)
Has A Lot Of Stress (Age 18+)	23.4	(19 - 27.9)	--		23.9	(21.2 - 26.7)	8.7*	(4.9 - 12.5)	22.5	(21.7 - 23.3)	10.9	(9.6 - 12.2)
<b>Chronic Conditions</b>												
Arthritis / Rheumatism	22.2	(17.5 - 26.9)	54.4	(42.9 - 65.9)	25.6	(22.7 - 28.6)	51.9	(45.6 - 58.2)	16.4	(15.8 - 17)	47.1	(45.1 - 49.1)
Diabetes	6.2*	(4 - 8.4)	22.2*	(14 - 30.5)	7.0	(5.5 - 8.6)	19.6	(14.6 - 24.5)	6.1	(5.6 - 6.5)	16.9	(15.2 - 18.6)
Asthma	11.1*	(7.3 - 15)	11.0*	(4.3 - 17.6)	10.0	(7.8 - 12.3)	9.2*	(5.7 - 12.7)	8.2	(7.7 - 8.8)	7.3	(6.3 - 8.3)
High Blood Pressure	20.0	(15.9 - 24.2)	53.4	(43.2 - 63.5)	19.8	(17.3 - 22.3)	49.0	(42 - 56)	16.4	(15.8 - 17.1)	47.2	(45.1 - 49.3)

Source: Canadian Community Health Survey (CCHS), 2007  
 Numbers in brackets represent the 95% confidence intervals (CI) around the estimates.  
<sup>1</sup>CCHS estimates are not available for sub-LHIN planning areas. Estimates for Kingston, Frontenac and Lennox & Addington Public Health are used for this profile.  
 -- Because of high sampling variability this estimate is not available  
 \* Value is significantly different than the provincial estimate  
 Estimates are for the population aged 12 or older, unless otherwise indicated.

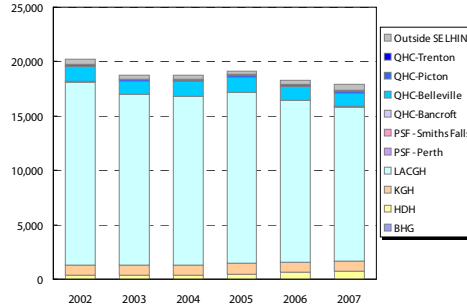
# Sub-LHIN Planning Area Profile (cont'd): Tyendinaga, Napanee

## Emergency Department Utilization

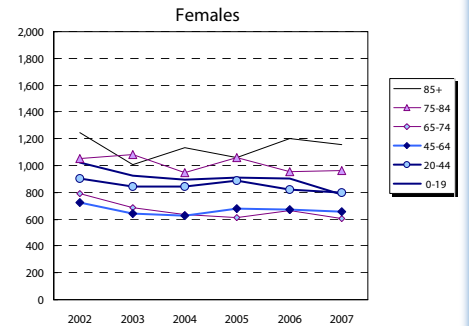
ED Visits by Area Residents by CTAS Level



ED Visits by Institution



Rate (/1,000) of ED Visits by Age Group



Community Support Services (selected)

Head Office Location of Provider	Caregiver Support all Services (hours)		Meals on Wheels (meals)		Transportation (1-way trips)	
	2006	2012	2006	2012	2006	2012
Addington N/C Frontenac	1,160	2,015	5,110	2,968	3,130	2,858
Belleville	7,077	12,827	18,800	20,990	5,858	5,715
Brockville	2,590	2,970	14,000	23,111	4,500	8,015
Central Hastings	588	-	4,100	4,867	2,800	3,289
Kingston	5,109	-	125,063	900	900	-
North Hastings	2,600	4,695	4,500	7,573	6,500	9,419
Prince Edward County	3,822	7,503	15,000	27,597	1,525	2,346
Quinte West	26,109	58,984	49,675	128,120	9,380	19,223
Smiths Falls, Perth, Lanark	10,744	8,150	50,860	68,389	30,559	46,063
Tyendinaga Napanee	2,780	1,101	9,500	10,148	13,000	16,205
South East LHIN	62,579	95,927	171,545	285,078	78,152	110,430

Community Care Access Centre (CCAC)

Services	2007/08	20012/13	Change 07-12	
	Actual	Projected	#	%
Admissions	8,251	11,396	3,145	38.1%
In-Home Acute	44,307	43,457	( 850)	(1.9%)
In-Home Maintenance	216,305	228,140	11,835	5.5%
In-Home Rehab	31,389	29,826	(1,563)	(5.0%)
In-Home End-of-Life	14,559	14,177	( 382)	(2.6%)
In-Home LTC	64,034	67,614	3,580	5.6%
Residential	1,406	1,394	( 12)	(0.8%)
<b>Total</b>	<b>372,000</b>	<b>384,608</b>	<b>12,608</b>	<b>3.4%</b>

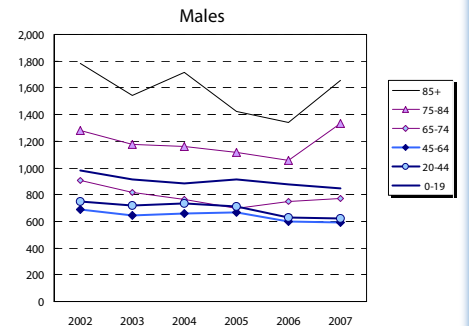
\*Community Health Centre (CHC) Actual and Projected pending verification with local data management personnel

Homemaking/Personal Supp/Attendant/Respite-Phys Dis Outreach

Area of Service Provision	2006	2012
Hastings/Prince Edward	34,000	17,616
Frontenac/Leeds Grenville/Lanark	81,972	76,044
South East LHIN	115,972	93,660

Hospital-based Services

	2007/08 Actual				2012/13 Projected			
	To SE LHIN Hospitals	Outside SE LHIN	Total	% of Total	To SE LHIN Hospitals	Outside SE LHIN	Total	% of Total
<b>ER Visits</b>	17,380	557	17,937	96.9%	18,348	968	19,316	96.6%
<b>IP Events (Acute Institutions)</b>								
No. of Separations	2,118	220	2,338	90.6%	2,188	70	2,258	96.8%
Acute Days of Stay	11,929	1,472	13,401	89.0%	12,307	378	12,685	93.1%
ALC <sup>1</sup> Separations	95	5	100	95.0%	126	31	157	80.3%
ALC Days of Stay	2,013	217	2,230	90.3%	3,150	1,137	4,287	73.7%
<b>Outpatient Events/Clinic Visits</b>								
Surgical/PARR <sup>2</sup>	2,297	294	2,591	88.7%	2,594	297	2,891	89.7%
Oncology Visits	677	25	702	96.4%	687	10	697	98.6%
Dialysis Visits	2,825	114	2,939	96.1%	2,998	173	3,171	94.6%
Cardiac Caths	153	16	169	90.5%	153	( 0)	153	100.0%
Radiation Treatments	885	73	958	92.4%	1,184	299	1,483	79.9%
All Outpatient Events	6,837	2,594	9,431	72.5%	7,617	780	8,397	88.2%
<b>Rehabilitation</b>								
Cases	16	5	21	76.2%	22	6	28	78.6%
Days	447	106	553	80.8%	658	211	869	75.8%
<b>Complex Continuing Care</b>								
Cases	28	-	28	100.0%	29	1	30	96.7%
Days	1,421	-	1,421	100.0%	1,022	( 399)	623	43.8%
<b>Adult Mental Health</b>								
Cases	95	3	98	96.9%	88	( 7)	81	82.7%
Days	2,020	142	2,162	93.4%	3,063	1,043	4,106	74.6%



Community Mental Health and Addictions

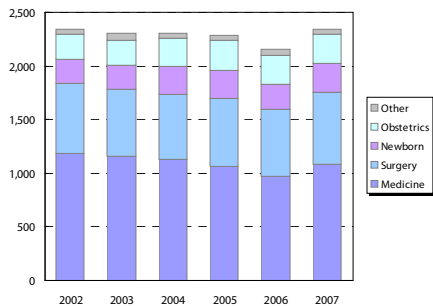
Individuals Served (2007)

Head Office Location of Provider	2007
Belleville	4,629
Brockville	5,392
Kingston & Islands	7,560
Smiths Falls, Perth, Lanark	9,091
Tyendinaga Napanee	1,758
South East LHIN	28,430

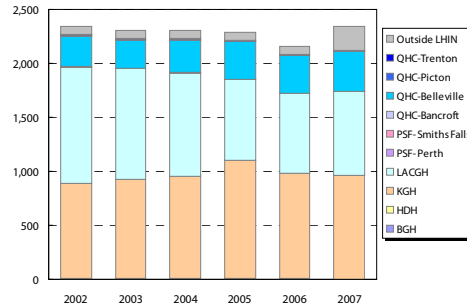
Clients with Open Admission to program...

County	Problem Gambling		Substance Abuse	
	2004	2008	2004	2008
Frontenac	39	86	1,462	2,023
Hastings	21	15	811	1,043
Lanark	7	26	290	600
Leeds-Gren.	35	50	429	806
Lenn. & Add.	12	15	489	841
Prince Ed.	<5	<5	105	151

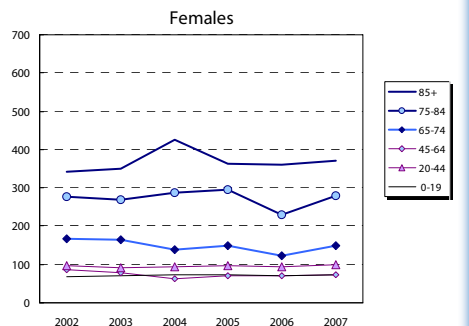
Inpatient Visits by Area Residents by Service Type



Inpatient Visits by Institution



Rate (/1,000) of Inpatient Events by Age Group



## Hospital In-Patient Utilization