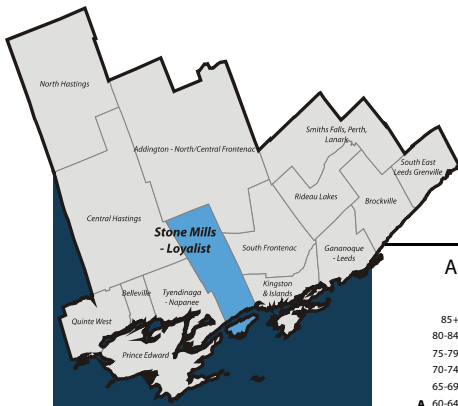


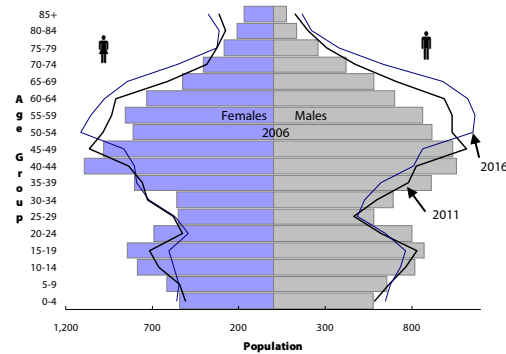
South East Local Health Integration Network (LHIN) Sub-LHIN Planning Area Profile: Stone Mills, Loyalist



Quick Facts:

Size: 1,030 km²
 Population (2006)
 Total: 22,630
 Aged 65+: 3,070
 % 65+: 13.5%
 Density: 22.0 persons/km²

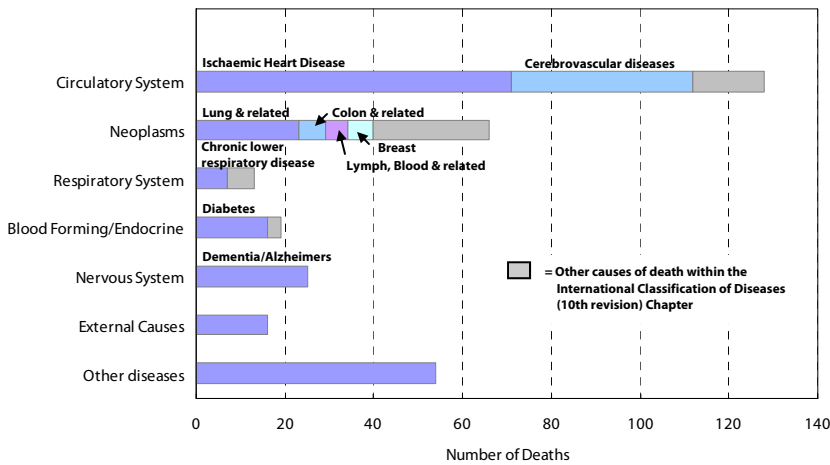
Age Distribution, 2006, 2011 and 2016 (projected)



Demography

Year	Stone Mills			South East		
	Loyalist	LHIN	Ontario	Loyalist	LHIN	Ontario
Population Counts						
Total Population						
2006	23,430	482,078	12,705,344			
2009	23,626	486,101	13,050,754			
2011	23,803	492,452	13,349,125			
2016	24,681	510,626	14,149,965			
Percentage of Total Population						
Aged 65+						
2006	3,066	80,630	1,649,293	13.1%	16.7%	13.0%
2009	3,450	86,097	1,770,571	14.6%	17.7%	13.6%
2011	3,734	90,168	1,864,941	15.7%	18.3%	14.0%
2016	4,795	105,224	2,214,279	19.4%	20.6%	15.6%
Aged 75+						
2006	1,133	37,269	781,257	4.8%	7.7%	6.1%
2009	1,348	38,990	837,672	5.7%	8.0%	6.4%
2011	1,556	40,324	871,594	6.5%	8.2%	6.5%
2016	1,783	44,307	959,871	7.2%	8.7%	6.8%
Aged 85+						
2006	246	9,648	192,104	1.0%	2.0%	1.5%
2009	338	10,718	228,156	1.4%	2.2%	1.7%
2011	440	11,302	249,961	1.8%	2.3%	1.9%
2016	540	12,494	294,008	2.2%	2.4%	2.1%

Leading Causes of Death in the Sub-LHIN Planning area, 2001-2004



Census Characteristics

	Stone Mills Loyalist	South East LHIN	Ontario
No certificate, degree or diploma (age 25+)	16.9%	20.0%	18.7%
Completed post-secondary education (age 25+)	53.7%	53.4%	56.8%
Unemployment rate (age 15+)	4.5%	6.2%	6.4%
Labour force participation rate (age 15+)	65.8%	62.4%	67.1%
Proportion of population living in low income	8.1%	11.9%	14.7%
English Mother tongue	95.2%	91.5%	69.8%
French Mother tongue	1.9%	2.7%	4.4%
Immigrants	7.0%	9.3%	28.3%
Recent Immigrants (5 years)	0.4%	0.8%	4.8%
Visible minorities	0.9%	3.3%	22.8%
Aboriginal Identity	2.9%	2.8%	2.0%

Health Status

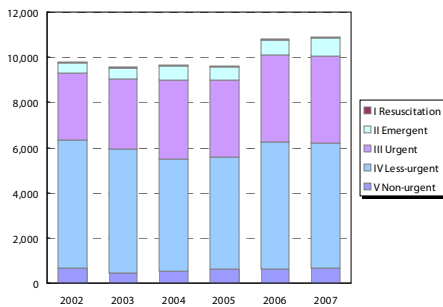
	Kingston, Frontenac and Lennox & Addington Public Health ¹				South East LHIN				Ontario			
	Total Population		Aged 65 and Older		Total Population		Aged 65 and Older		Total Population		Aged 65 and Older	
Overall Health Status												
Self-rated Health: Very Good or Excellent	57.1	(51.5 - 62.6)	46.4	(35.9 - 57)	54.2	(50.4 - 58)	40.5	(34.5 - 46.5)	59.9	(58.9 - 60.9)	37.9	(35.9 - 40)
Activity Limitation	41.3	(36.2 - 46.3)	59.1	(48.6 - 69.6)	43.6	(40.3 - 46.9)	62.7	(56.2 - 69.1)	33.5	(32.6 - 34.4)	59.1	(57 - 61.3)
Use of Preventive Care												
Received Flu Shot In Past Year	46.0	(40.9 - 51.1)	81.4	(73.7 - 89.1)	46.9	(43.1 - 50.7)	70.3	(64.1 - 76.6)	35.9	(35 - 36.8)	70.1	(68.2 - 72)
Contact With Medical Doctor In Past Year	83.6	(79.7 - 87.5)	93.1	(88.4 - 97.9)	80.8	(78.2 - 83.4)	91.6	(88.3 - 94.9)	81.4	(80.6 - 82.2)	90.5	(89.4 - 91.7)
Health Practices												
Daily Smokers	22.8	(17.8 - 27.8)	--		22.3	(19.3 - 25.4)	11.4*	(7.6 - 15.2)	16.3	(15.6 - 17)	7.7	(6.7 - 8.8)
Exposed To Second Hand Smoke In Home	10.4*	(5.1 - 15.7)	--		11.7	(8.6 - 14.7)	--		6.1	(5.6 - 6.6)	4.6	(3.5 - 5.6)
Heavy Alcohol Consumption	21.0	(16.2 - 25.8)	--		22.1	(18.6 - 25.6)	7.5*	(3.6 - 11.5)	21.7	(20.8 - 22.6)	7.1	(5.7 - 8.5)
Obese Or Overweight	52.5	(46.2 - 58.9)	51.6	(41.5 - 61.7)	53.8	(49.8 - 57.8)	54.7	(48.3 - 61)	49.6	(48.6 - 50.6)	53.4	(51.3 - 55.6)
Physically Inactive	45.3	(39.8 - 50.9)	49.6	(39.5 - 59.7)	44.5	(41 - 48.1)	53.3	(47 - 59.7)	49.0	(48 - 50.1)	54.2	(52.2 - 56.3)
Consumes Fruits / Vegetables 5+ Times A Day	42.3	(37.2 - 47.4)	51.6	(39.4 - 63.9)	42.8	(39.3 - 46.3)	49.0	(42.3 - 55.6)	39.7	(38.7 - 40.8)	41.6	(39.4 - 43.7)
Has A Lot Of Stress (Age 18+)	23.4	(19 - 27.9)	--		23.9	(21.2 - 26.7)	8.7*	(4.9 - 12.5)	22.5	(21.7 - 23.3)	10.9	(9.6 - 12.2)
Chronic Conditions												
Arthritis / Rheumatism	22.2	(17.5 - 26.9)	54.4	(42.9 - 65.9)	25.6	(22.7 - 28.6)	51.9	(45.6 - 58.2)	16.4	(15.8 - 17)	47.1	(45.1 - 49.1)
Diabetes	6.2*	(4 - 8.4)	22.2*	(14 - 30.5)	7.0	(5.5 - 8.6)	19.6	(14.6 - 24.5)	6.1	(5.6 - 6.5)	16.9	(15.2 - 18.6)
Asthma	11.1*	(7.3 - 15)	11.0*	(4.3 - 17.6)	10.0	(7.8 - 12.3)	9.2*	(5.7 - 12.7)	8.2	(7.7 - 8.8)	7.3	(6.3 - 8.3)
High Blood Pressure	20.0	(15.9 - 24.2)	53.4	(43.2 - 63.5)	19.8	(17.3 - 22.3)	49.0	(42 - 56)	16.4	(15.8 - 17.1)	47.2	(45.1 - 49.3)

Source: Canadian Community Health Survey (CCHS), 2007
 Numbers in brackets represent the 95% confidence intervals (CI) around the estimates.
 *CCHS estimates are not available for sub-LHIN planning areas. Estimates for Kingston, Frontenac and Lennox & Addington Public Health are used for this profile.
 -- Because of high sampling variability this estimate is not available
 * Value is significantly different than the provincial estimate
 Estimates are for the population aged 12 or older, unless otherwise indicated.

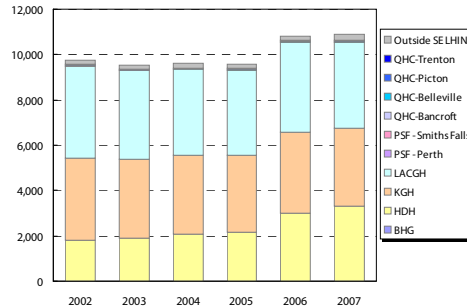
Sub-LHIN Planning Area Profile (cont'd): Stone Mills, Loyalist

Emergency Department Utilization

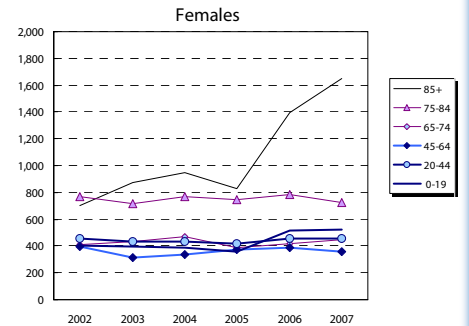
ED Visits by Area Residents by CTAS Level



ED Visits by Institution



Rate (/1,000) of ED Visits by Age Group



Community Support Services (selected)

Head Office Location of Provider	Caregiver Support all Services (hours)		Meals on Wheels (meals)		Transportation (1-way trips)	
	2006	2012	2006	2012	2006	2012
Addington N/C Frontenac	1,160	2,015	5,110	2,968	3,130	2,858
Belleville	7,077	12,827	18,800	20,990	5,858	5,715
Brockville	2,590	2,970	14,000	23,111	4,500	8,015
Central Hastings	588	-	4,100	4,867	2,800	3,289
Kingston	5,109	-	125,063	900	900	-
North Hastings	2,600	4,695	4,500	7,573	6,500	9,419
Prince Edward County	3,822	7,503	15,000	27,597	1,525	2,346
Quinte West	26,109	58,984	49,675	128,120	9,380	19,223
Smiths Falls, Perth, Lanark	10,744	8,150	50,860	68,389	30,559	46,063
Tyendinaga Napanee	2,780	1,101	9,500	10,148	13,000	16,205
South East LHIN	62,579	95,927	171,545	285,078	78,152	110,430

Community Care Access Centre (CCAC)

Services	2007/08	20012/13	Change 07-12	
	Actual	Projected	#	%
Admissions	8,251	11,396	3,145	38.1%
In-Home Acute	44,307	43,457	(850)	(1.9%)
In-Home Maintenance	216,305	228,140	11,835	5.5%
In-Home Rehab	31,389	29,826	(1,563)	(5.0%)
In-Home End-of-Life	14,559	14,177	(382)	(2.6%)
In-Home LTC	64,034	67,614	3,580	5.6%
Residential	1,406	1,394	(12)	(0.8%)
Total	372,000	384,608	12,608	3.4%

*Community Health Centre (CHC) Actual and Projected pending verification with local data management personnel

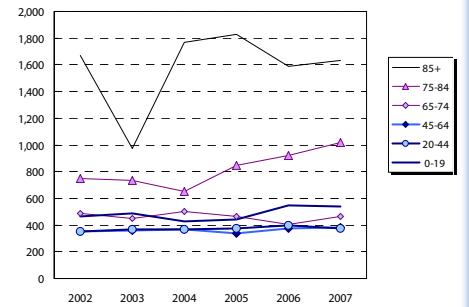
Homemaking/Personal Supp/Attendant/Respite-Phys Dis Outreach

Area of Service Provision	2006	2012
Hastings/Prince Edward	34,000	17,616
Frontenac/Leeds Grenville/Lanark	81,972	76,044
South East LHIN	115,972	93,660

Hospital-based Services

	2007/08 Actual				20012/13 Projected			
	To SE LHIN Hospitals	Outside SE LHIN	Total	% of Total	To SE LHIN Hospitals	Outside SE LHIN	Total	% of Total
ER Visits	10,651	230	10,881	100%	11,346	695	12,041	100%
IP Events (Acute Institutions)								
No. of Separations	1,608	79	1,687	100%	1,891	283	2,174	100%
Acute Days of Stay	9,362	599	9,961	100%	12,489	3,127	15,616	100%
ALC Separations	67	4	71	100%	107	40	147	100%
ALC Days of Stay	2,111	15	2,126	100%	2,948	837	3,785	100%
Outpatient Events/Clinic Visits								
Surgical/PARR*	2,028	65	2,093	100%	2,350	322	2,672	100%
Oncology Visits	650	27	677	100%	756	106	862	100%
Dialysis Visits	1,640	89	1,729	100%	2,375	735	3,110	100%
Cardiac Caths	99	1	100	100%	110	11	121	100%
Radiation Treatments	985	49	1,034	100%	1,220	235	1,455	100%
All Outpatient Events	5,402	2,350	7,752	100%	6,811	1,409	8,220	100%
Rehabilitation								
Cases	31	3	34	100%	46	15	61	100%
Days	1,078	55	1,133	100%	1,198	120	1,318	100%
Complex Continuing Care								
Cases	20	-	20	100%	36	16	52	100%
Days	766	-	766	100%	1,920	1,154	3,074	100%
Adult Mental Health								
Cases	60	4	64	100%	84	24	108	100%
Days	873	121	994	100%	2,236	1,363	3,600	100%

Rate (/1,000) of ED Visits by Age Group



Community Mental Health and Addictions

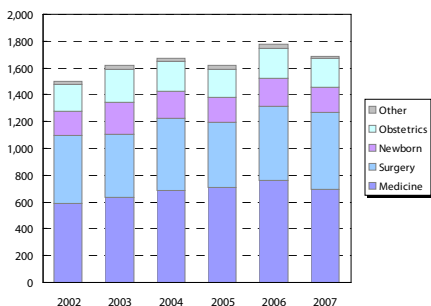
Individuals Served (2007)

Head Office Location of Provider	2007
Belleville	4,629
Brockville	5,392
Kingston & Islands	7,560
Smiths Falls, Perth, Lanark	9,091
Tyendinaga Napanee	1,758
South East LHIN	28,430

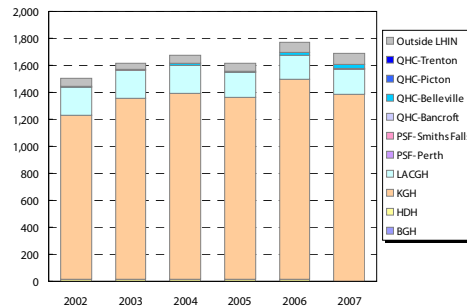
Clients with Open Admission to program...

County	Problem Gambling		Substance Abuse	
	2004	2008	2004	2008
Frontenac	39	86	1,462	2,023
Hastings	21	15	811	1,043
Lanark	7	26	290	600
Leeds-Gren.	35	50	429	806
Lenn. & Add.	12	15	489	841
Prince Ed.	<5	<5	105	151

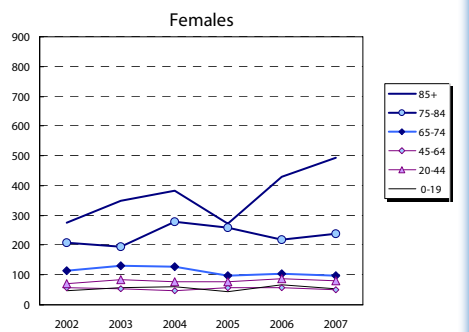
Inpatient Visits by Area Residents by Service Type



Inpatient Visits by Institution



Rate (/1,000) of Inpatient Events by Age Group



Rate (/1,000) of Inpatient Events by Age Group



Hospital In-Patient Utilization