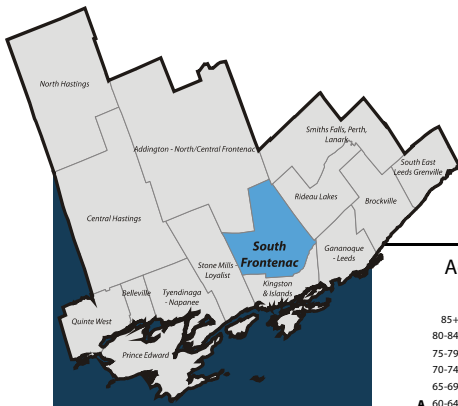


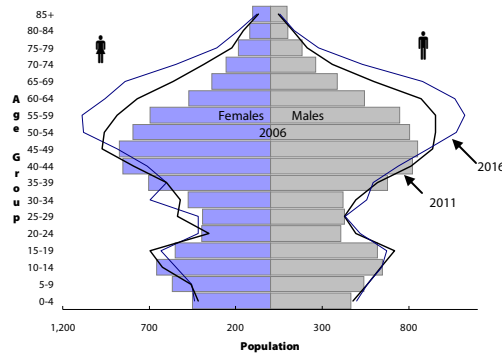
South East Local Health Integration Network (LHIN) Sub-LHIN Planning Area Profile: South Frontenac



Quick Facts:

Size: 940 km²
 Population (2006)
 Total: 18,230
 Aged 65+: 2,030
 % 65+: 11.1%
 Density: 19.4 persons/km²

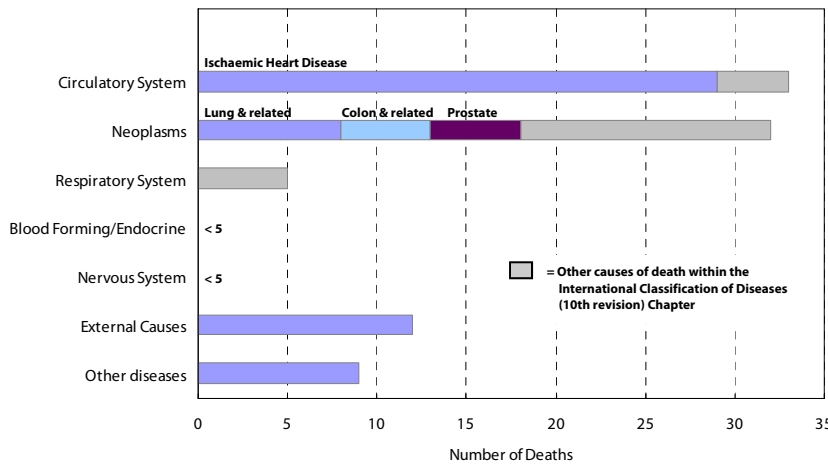
Age Distribution, 2006, 2011 and 2016 (projected)



Demography

Year	Population Counts			Percentage of Total Population		
	South Frontenac	South East LHIN	Ontario	South Frontenac	South East LHIN	Ontario
Total Population						
2006	17,882	482,078	12,705,344			
2009	19,043	486,101	13,050,754			
2011	20,286	492,452	13,349,125			
2016	22,157	510,626	14,149,965			
Aged 65+						
2006	2,028	80,630	1,649,293	11.3%	16.7%	13.0%
2009	2,407	86,097	1,770,571	12.6%	17.7%	13.6%
2011	2,736	90,168	1,864,941	13.5%	18.3%	14.0%
2016	3,838	105,224	2,214,279	17.3%	20.6%	15.6%
Aged 75+						
2006	784	37,269	781,257	4.4%	7.7%	6.1%
2009	821	38,990	837,672	4.3%	8.0%	6.4%
2011	836	40,324	871,594	4.1%	8.2%	6.5%
2016	1,041	44,307	959,871	4.7%	8.7%	6.8%
Aged 85+						
2006	197	9,648	192,104	1.1%	2.0%	1.5%
2009	168	10,718	228,156	0.9%	2.2%	1.7%
2011	116	11,302	249,961	0.6%	2.3%	1.9%
2016	132	12,494	294,008	0.6%	2.4%	2.1%

Leading Causes of Death in the Sub-LHIN Planning area, 2001-2004



Census Characteristics

	South Frontenac	South East LHIN	Ontario
No certificate, degree or diploma (age 25+)	15.8%	20.0%	18.7%
Completed post-secondary education (age 25+)	58.7%	53.4%	56.8%
Unemployment rate (age 15+)	5.3%	6.2%	6.4%
Labour force participation rate (age 15+)	68.4%	62.4%	67.1%
Proportion of population living in low income	5.3%	11.9%	14.7%
English Mother tongue	94.9%	91.5%	69.8%
French Mother tongue	1.7%	2.7%	4.4%
Immigrants	6.0%	9.3%	28.3%
Recent Immigrants (5 years)	0.3%	0.8%	4.8%
Visible minorities	1.3%	3.3%	22.8%
Aboriginal Identity	3.0%	2.8%	2.0%

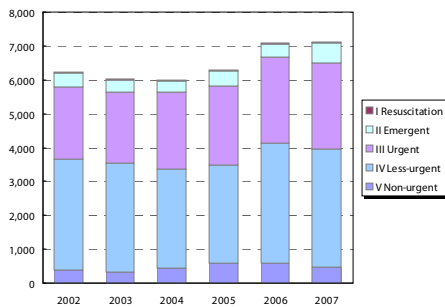
Health Status

	Kingston, Frontenac and Lennox & Addington Public Health ¹				South East LHIN				Ontario			
	Total Population		Aged 65 and Older		Total Population		Aged 65 and Older		Total Population		Aged 65 and Older	
Overall Health Status												
Self-rated Health: Very Good or Excellent	57.1	(51.5 - 62.6)	46.4	(35.9 - 57)	54.2	(50.4 - 58)	40.5	(34.5 - 46.5)	59.9	(58.9 - 60.9)	37.9	(35.9 - 40)
Activity Limitation	41.3	(36.2 - 46.3)	59.1	(48.6 - 69.6)	43.6	(40.3 - 46.9)	62.7	(56.2 - 69.1)	33.5	(32.6 - 34.4)	59.1	(57 - 61.3)
Use of Preventive Care												
Received Flu Shot In Past Year	46.0	(40.9 - 51.1)	81.4	(73.7 - 89.1)	46.9	(43.1 - 50.7)	70.3	(64.1 - 76.6)	35.9	(35 - 36.8)	70.1	(68.2 - 72)
Contact With Medical Doctor In Past Year	83.6	(79.7 - 87.5)	93.1	(88.4 - 97.9)	80.8	(78.2 - 83.4)	91.6	(88.3 - 94.9)	81.4	(80.6 - 82.2)	90.5	(89.4 - 91.7)
Health Practices												
Daily Smokers	22.8	(17.8 - 27.8)	--		22.3	(19.3 - 25.4)	11.4*	(7.6 - 15.2)	16.3	(15.6 - 17)	7.7	(6.7 - 8.8)
Exposed To Second Hand Smoke In Home	10.4	(5.1 - 15.7)	--		11.7	(8.6 - 14.7)	--		6.1	(5.6 - 6.6)	4.6	(3.5 - 5.6)
Heavy Alcohol Consumption	21.0	(16.2 - 25.8)	--		22.1	(18.6 - 25.6)	7.5*	(3.6 - 11.5)	21.7	(20.8 - 22.6)	7.1	(5.7 - 8.5)
Obese Or Overweight	52.5	(46.2 - 58.9)	51.6	(41.5 - 61.7)	53.8	(49.8 - 57.8)	54.7	(48.3 - 61)	49.6	(48.6 - 50.6)	53.4	(51.3 - 55.6)
Physically Inactive	45.3	(39.8 - 50.9)	49.6	(39.5 - 59.7)	44.5	(41 - 48.1)	53.3	(47 - 59.7)	49.0	(48 - 50.1)	54.2	(52.2 - 56.3)
Consumes Fruits / Vegetables 5+ Times A Day	42.3	(37.2 - 47.4)	51.6	(39.4 - 63.9)	42.8	(39.3 - 46.3)	49.0	(42.3 - 55.6)	39.7	(38.7 - 40.8)	41.6	(39.4 - 43.7)
Has A Lot Of Stress (Age 18+)	23.4	(19 - 27.9)	--		23.9	(21.2 - 26.7)	8.7*	(4.9 - 12.5)	22.5	(21.7 - 23.3)	10.9	(9.6 - 12.2)
Chronic Conditions												
Arthritis / Rheumatism	22.2	(17.5 - 26.9)	54.4	(42.9 - 65.9)	25.6	(22.7 - 28.6)	51.9	(45.6 - 58.2)	16.4	(15.8 - 17)	47.1	(45.1 - 49.1)
Diabetes	6.2*	(4 - 8.4)	22.2*	(14 - 30.5)	7.0	(5.5 - 8.6)	19.6	(14.6 - 24.5)	6.1	(5.6 - 6.5)	16.9	(15.2 - 18.6)
Asthma	11.1*	(7.3 - 15)	11.0*	(4.3 - 17.6)	10.0	(7.8 - 12.3)	9.2*	(5.7 - 12.7)	8.2	(7.7 - 8.8)	7.3	(6.3 - 8.3)
High Blood Pressure	20.0	(15.9 - 24.2)	53.4	(43.2 - 63.5)	19.8	(17.3 - 22.3)	49.0	(42 - 56)	16.4	(15.8 - 17.1)	47.2	(45.1 - 49.3)

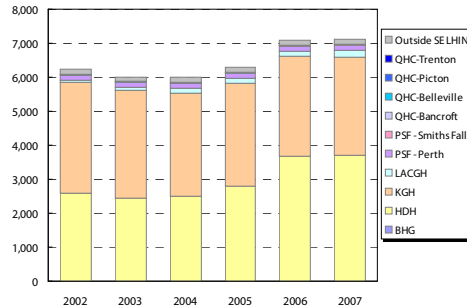
Source: Canadian Community Health Survey (CCHS), 2007
 Numbers in brackets represent the 95% confidence intervals (CI) around the estimates.
 *CCHS estimates are not available for sub-LHIN planning areas. Estimates for Kingston, Frontenac and Lennox & Addington Public Health are used for this profile.
 -- Because of high sampling variability this estimate is not available
 * Value is significantly different than the provincial estimate
 Estimates are for the population aged 12 or older, unless otherwise indicated.

Emergency Department Utilization

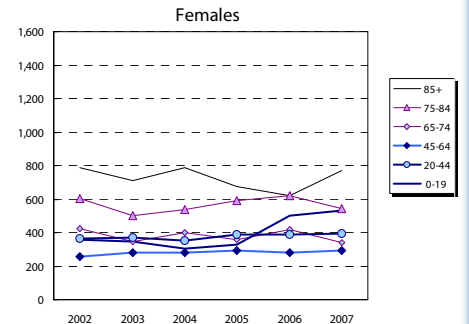
ED Visits by Area Residents by CTAS Level



ED Visits by Institution



Rate (/1,000) of ED Visits by Age Group



Community Support Services (selected)

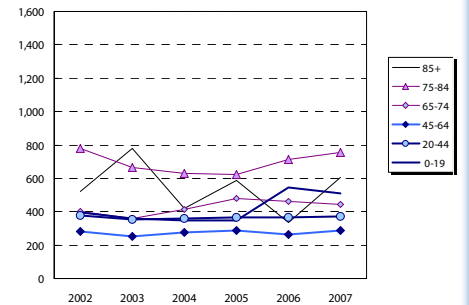
Head Office Location of Provider	Caregiver Support all Services (hours)		Meals on Wheels (meals)		Transportation (1-way trips)	
	2006	2012	2006	2012	2006	2012
Addington N/C Frontenac	1,160	2,015	5,110	2,968	3,130	2,858
Belleville	7,077	12,827	18,800	20,990	5,858	5,715
Brockville	2,590	2,970	14,000	23,111	4,500	8,015
Central Hastings	588	-	4,100	4,867	2,800	3,289
Kingston	5,109	-	125,063	900	900	900
North Hastings	2,600	4,695	4,500	7,573	6,500	9,419
Prince Edward County	3,822	7,503	15,000	27,597	1,525	2,346
Quinte West	26,109	58,984	49,675	128,120	9,380	19,223
Smiths Falls, Perth, Lanark	10,744	8,150	50,860	68,389	30,559	46,063
Tyendinaga Napanee	2,780	1,101	9,500	10,148	13,000	16,205
South East LHIN	62,579	95,927	171,545	285,078	78,152	110,430

Community Care Access Centre (CCAC)

Services	2007/08	2007/08	Change 07-12	
	Actual	Projected	#	%
Admissions	8,251	11,396	3,145	38.1%
In-Home Acute	44,307	43,457	(850)	(1.9%)
In-Home Maintenance	216,305	228,140	11,835	5.5%
In-Home Rehab	31,389	29,826	(1,563)	(5.0%)
In-Home End-of-Life	14,559	14,177	(382)	(2.6%)
In-Home LTC	64,034	67,614	3,580	5.6%
Residential	1,406	1,394	(12)	(0.8%)
Total	372,000	384,608	12,608	3.4%

*Community Health Centre (CHC) Actual and Projected pending verification with local data management personnel

Rate (/1,000) of ED Visits by Age Group



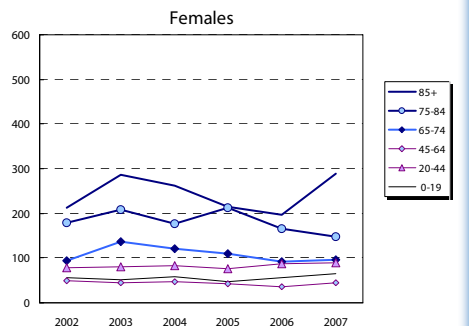
Homemaking/Personal Supp/Attendant/Respite-Phys Dis Outreach

Area of Service Provision	2006	2012
Hastings/Prince Edward	34,000	17,616
Frontenac/Leeds Grenville/Lanark	81,972	76,044
South East LHIN	115,972	93,660

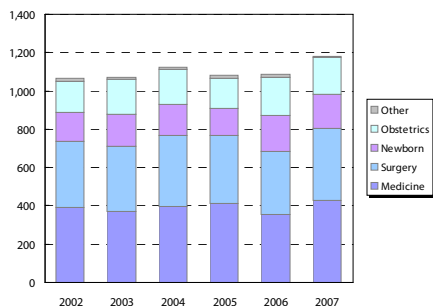
Hospital-based Services

	2007/08 Actual				2007/13 Projected				
	To SELHIN Hospitals	Outside SELHIN	Total	% of Total	To SELHIN Hospitals	Outside SELHIN	Total	% of Total	
ER Visits	6,962	155	7,117	100%	8,062	1,100	9,162	15.8%	
IP Events (Acute Institutions)									
No. of Separations	1,131	95.8%	50	4.2%	1,181	100%	1,269	138	12.2%
Acute Days of Stay	5,781	94.5%	335	5.5%	6,116	100%	7,691	1,910	33.0%
ALC ¹ Separations	33	97.1%	1	2.9%	34	100%	36	3	9.7%
ALC Days of Stay	739	98.8%	9	1.2%	748	100%	960	221	29.9%
Outpatient Events/Clinic Visits									
Surgical/PARR ²	1,407	98.0%	29	2.0%	1,436	100%	1,737	330	23.5%
Oncology Visits	500	99.0%	5	1.0%	505	100%	538	38	7.7%
Dialysis Visits	950	100.0%	-	-	950	100%	1,080	130	13.7%
Cardiac Caths	66	89.2%	8	10.8%	74	100%	80	14	21.7%
Radiation Treatments	699	99.1%	6	0.9%	705	100%	753	54	7.8%
All Outpatient Events	3,622	67.6%	1,737	32.4%	5,359	100%	4,189	567	15.7%
Rehabilitation									
Cases	22	88.0%	3	12.0%	25	100%	28	6	25.9%
Days	809	96.9%	26	3.1%	835	100%	827	18	2.2%
Complex Continuing Care									
Cases	14	87.5%	2	12.5%	16	100%	18	4	29.1%
Days	680	89.0%	84	11.0%	764	100%	616	(64)	(9.5%)
Adult Mental Health									
Cases	41	89.1%	5	10.9%	46	100%	41	(0)	(0.3%)
Days	747	82.5%	159	17.5%	906	100%	1,055	308	41.2%

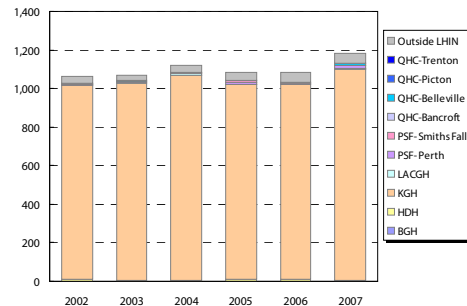
Rate (/1,000) of Inpatient Events by Age Group



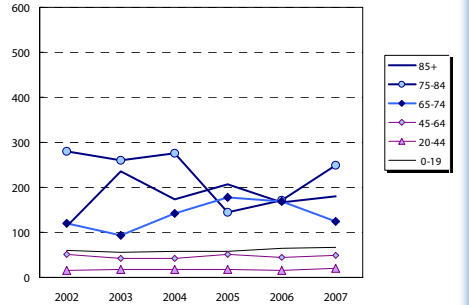
Inpatient Visits by Area Residents by Service Type



Inpatient Visits by Institution



Rate (/1,000) of Inpatient Events by Age Group



Hospital In-Patient Utilization