

South East Local Health Integration Network (LHIN) Sub-LHIN Planning Area Profile: South East Leeds Grenville

Quick Facts:

Size: 630 km²
 Population (2006)
 Total: 18,380
 Aged 65+: 2,990
 % 65+: 16.2%
 Density: 29.1 persons/km²

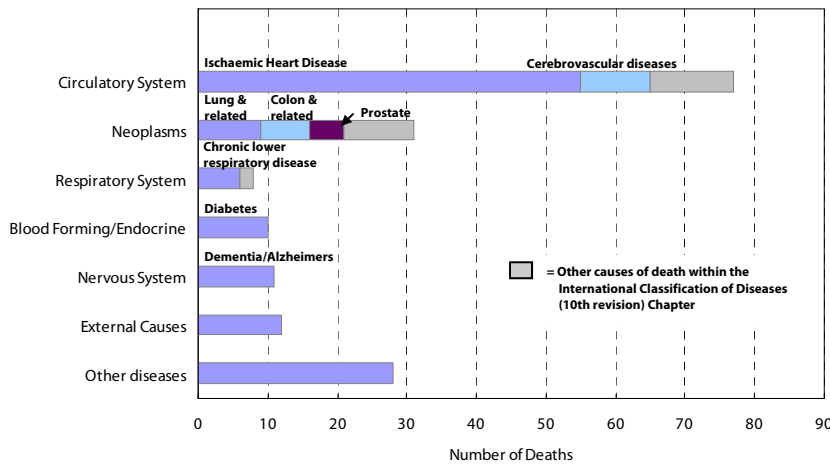
Age Distribution, 2006, 2011 and 2016 (projected)



Demography

Year	Population Counts			Percentage of Total Population		
	SE Leeds Grenville	South East LHIN	Ontario	SE Leeds Grenville	South East LHIN	Ontario
Total Population						
2006	19,340	482,078	12,705,344			
2009	18,869	486,101	13,050,754			
2011	18,529	492,452	13,349,125			
2016	18,268	510,626	14,149,965			
Aged 65+						
2006	2,986	80,630	1,649,293	15.4%	16.7%	13.0%
2009	3,192	86,097	1,770,571	16.9%	17.7%	13.6%
2011	3,354	90,168	1,864,941	18.1%	18.3%	14.0%
2016	3,962	105,224	2,214,279	21.7%	20.6%	15.6%
Aged 75+						
2006	1,230	37,269	781,257	6.4%	7.7%	6.1%
2009	1,287	38,990	837,672	6.8%	8.0%	6.4%
2011	1,330	40,324	871,594	7.2%	8.2%	6.5%
2016	1,417	44,307	959,871	7.8%	8.7%	6.8%
Aged 85+						
2006	264	9,648	192,104	1.4%	2.0%	1.5%
2009	292	10,718	228,156	1.5%	2.2%	1.7%
2011	323	11,302	249,961	1.7%	2.3%	1.9%
2016	328	12,494	294,008	1.8%	2.4%	2.1%

Leading Causes of Death in the Sub-LHIN Planning area, 2001-2004



Census Characteristics

	SE Leeds Grenville	South East LHIN	Ontario
No certificate, degree or diploma (age 25+)	21.3%	20.0%	18.7%
Completed post-secondary education (age 25+)	51.9%	53.4%	56.8%
Unemployment rate (age 15+)	5.2%	6.2%	6.4%
Labour force participation rate (age 15+)	60.9%	62.4%	67.1%
Proportion of population living in low income	9.1%	11.9%	14.7%
English Mother tongue	92.2%	91.5%	69.8%
French Mother tongue	3.7%	2.7%	4.4%
Immigrants	8.2%	9.3%	28.3%
Recent Immigrants (5 years)	0.4%	0.8%	4.8%
Visible minorities	1.9%	3.3%	22.8%
Aboriginal Identity	1.9%	2.8%	2.0%

Health Status

	Leeds, Grenville & Lanark District Health Unit ¹				South East LHIN				Ontario			
	Total Population		Aged 65 and Older		Total Population		Aged 65 and Older		Total Population		Aged 65 and Older	
Overall Health Status												
Self-rated Health: Very Good or Excellent	54.8	(49.2 - 60.3)	38.2	(26.6 - 49.7)	54.2	(50.4 - 58)	40.5	(34.5 - 46.5)	59.9	(58.9 - 60.9)	37.9	(35.9 - 40)
Activity Limitation	47.2	(41.7 - 52.7)	67.2	(57.6 - 76.8)	43.6	(40.3 - 46.9)	62.7	(56.2 - 69.1)	33.5	(32.6 - 34.4)	59.1	(57 - 61.3)
Use of Preventive Care												
Received Flu Shot In Past Year	44.6	(38.8 - 50.3)	70.9	(58.9 - 82.9)	46.9	(43.1 - 50.7)	70.3	(64.1 - 76.6)	35.9	(35 - 36.8)	70.1	(68.2 - 72)
Contact With Medical Doctor In Past Year	79.1	(74.8 - 83.3)	89.5	(82.3 - 96.7)	80.8	(78.2 - 83.4)	91.6	(88.3 - 94.9)	81.4	(80.6 - 82.2)	90.5	(89.4 - 91.7)
Health Practices												
Daily Smokers	21.6	(17.2 - 26)	--		22.3	(19.3 - 25.4)	11.4 [*]	(7.6 - 15.2)	16.3	(15.6 - 17)	7.7	(6.7 - 8.8)
Exposed To Second Hand Smoke In Home	12.4	(7.5 - 17.3)	--		11.7	(8.6 - 14.7)	--		6.1	(5.6 - 6.6)	4.6	(3.5 - 5.6)
Heavy Alcohol Consumption	23.0	(17 - 28.9)	--		22.1	(18.6 - 25.6)	7.5 [*]	(3.6 - 11.5)	21.7	(20.8 - 22.6)	7.1	(5.7 - 8.5)
Obese Or Overweight	52.1	(46.6 - 57.6)	61.7	(49.8 - 73.6)	53.8	(49.8 - 57.8)	54.7	(48.3 - 61)	49.6	(48.6 - 50.6)	53.4	(51.3 - 55.6)
Physically Inactive	41.9	(36.4 - 47.5)	45.1	(35.3 - 54.9)	44.5	(41 - 48.1)	53.3	(47 - 59.7)	49.0	(48 - 50.1)	54.2	(52.2 - 56.3)
Consumes Fruits / Vegetables 5+ Times A Day	38.5	(33.3 - 43.7)	44.2	(33.8 - 54.6)	42.8	(39.3 - 46.3)	49.0	(42.3 - 55.6)	39.7	(38.7 - 40.8)	41.6	(39.4 - 43.7)
Has A Lot Of Stress (Age 18+)	24.8	(19.7 - 29.9)	16.1 [*]	(6.6 - 25.6)	23.9	(21.2 - 26.7)	8.7 [*]	(4.9 - 12.5)	22.5	(21.7 - 23.3)	10.9	(9.6 - 12.2)
Chronic Conditions												
Arthritis / Rheumatism	25.2	(20.8 - 29.7)	48.7	(37.1 - 60.3)	25.6	(22.7 - 28.6)	51.9	(45.6 - 58.2)	16.4	(15.8 - 17)	47.1	(45.1 - 49.1)
Diabetes	7.1	(4.8 - 9.3)	20.9 [*]	(11.5 - 30.3)	7.0	(5.5 - 8.6)	19.6	(14.6 - 24.5)	6.1	(5.6 - 6.5)	16.9	(15.2 - 18.6)
Asthma	11.9 [†]	(7.7 - 16)	--		10.0	(7.8 - 12.3)	9.2 [†]	(5.7 - 12.7)	8.2	(7.7 - 8.8)	7.3	(6.3 - 8.3)
High Blood Pressure	18.2	(14.6 - 21.7)	45.0	(35 - 55.1)	19.8	(17.3 - 22.3)	49.0	(42 - 56)	16.4	(15.8 - 17.1)	47.2	(45.1 - 49.3)

Source: Canadian Community Health Survey (CCHS), 2007

Numbers in brackets represent the 95% confidence intervals (CI) around the estimates.

[†]CCHS estimates are not available for sub-LHIN planning areas. Estimates for the Leeds, Grenville and Lanark District Health Unit are used for this profile.

-- Because of high sampling variability this estimate is not available

* Value is significantly different than the provincial estimate

Estimates are for the population aged 12 or older, unless otherwise indicated.



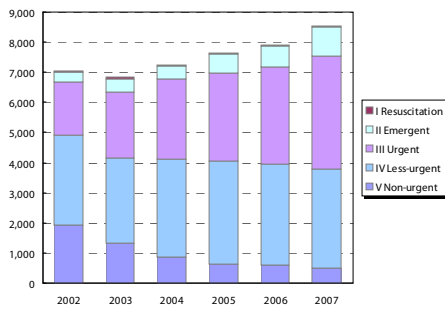
Ontario
Local Health Integration
Network

southeasthin.on.ca

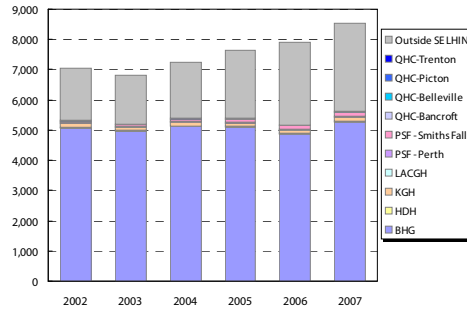
Sub-LHIN Planning Area Profile (cont'd): South East Leeds Grenville

Emergency Department Utilization

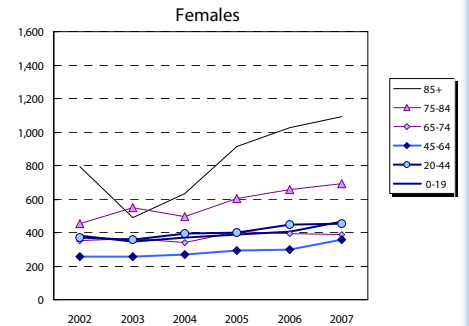
ED Visits by Area Residents by CTAS Level



ED Visits by Institution



Rate (/1,000) of ED Visits by Age Group



Community Support Services (selected)

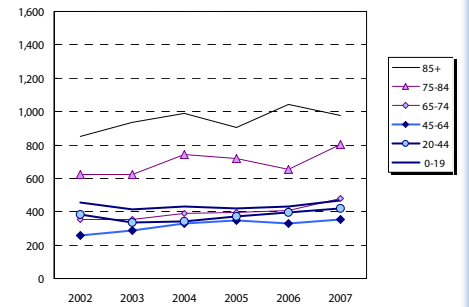
Head Office Location of Provider	Caregiver Support all Services (hours)		Meals on Wheels (meals)		Transportation (1-way trips)	
	2006	2012	2006	2012	2006	2012
Addington N/C Frontenac	1,160	2,015	5,110	2,968	3,130	2,858
Belleville	7,077	12,827	18,800	20,990	5,858	5,715
Brockville	2,590	2,970	14,000	23,111	4,500	8,015
Central Hastings	588	-	4,100	4,867	2,800	3,289
Kingston	5,109	-	125,063	900	900	-
North Hastings	2,600	4,695	4,500	7,573	6,500	9,419
Prince Edward County	3,822	7,503	15,000	27,597	1,525	2,346
Quinte West	26,109	58,984	49,675	128,120	9,380	19,223
Smiths Falls, Perth, Lanark	10,744	8,150	50,860	68,389	30,559	46,063
Tyendinaga Napanee	2,780	1,101	9,500	10,148	13,000	16,205
South East LHIN	62,579	95,927	171,545	285,078	78,152	110,430

Community Care Access Centre (CCAC)

Services	2007/08	2012/13	Change 07-12	
	Actual	Projected	#	%
Admissions	8,251	11,396	3,145	38.1%
In-Home Acute	44,307	43,457	(850)	(1.9%)
In-Home Maintenance	216,305	228,140	11,835	5.5%
In-Home Rehab	31,389	29,826	(1,563)	(5.0%)
In-Home End-of-Life	14,559	14,177	(382)	(2.6%)
In-Home LTC	64,034	67,614	3,580	5.6%
Residential	1,406	1,394	(12)	(0.8%)
Total	372,000	384,608	12,608	3.4%

*Community Health Centre (CHC) Actual and Projected pending verification with local data management personnel

Rate (/1,000) of ED Visits by Age Group



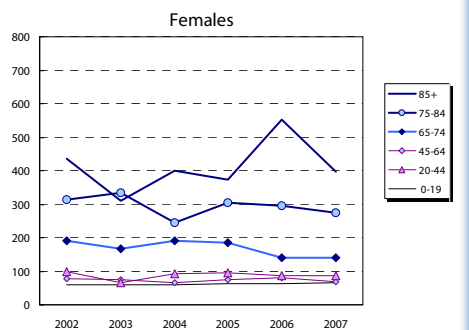
Homemaking/Personal Supp/Attendant/Respite-Phys Dis Outreach

Area of Service Provision	2006	2012
Hastings/Prince Edward	34,000	17,616
Frontenac/Leeds Grenville/Lanark	81,972	76,044
South East LHIN	115,972	93,660

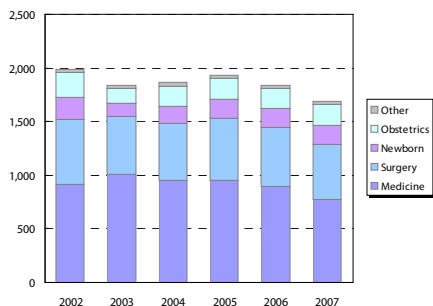
Hospital-based Services

	2007/08 Actual				2012/13 Projected				
	To SELHIN Hospitals	Outside SELHIN	Total	% of Total	To SELHIN Hospitals	Outside SELHIN	Total	% of Total	
ER Visits	5,612	65.8%	2,923	34.2%	8,535	100.0%	7,854	2,242	40.0%
IP Events (Acute Institutions)									
No. of Separations	1,258	74.3%	435	25.7%	1,693	100.0%	1,314	56	4.4%
Acute Days of Stay	7,215	77.7%	2,073	22.3%	9,288	100.0%	7,459	244	3.4%
ALC Separations	39	90.7%	4	9.3%	43	100.0%	48	9	22.8%
ALC Days of Stay	1,431	90.5%	151	9.5%	1,582	100.0%	1,806	375	26.2%
Outpatient Events/Clinic Visits									
Surgical/PARR*	2,422	84.7%	438	15.3%	2,860	100.0%	3,026	604	24.9%
Oncolysis Visits	134	27.5%	354	72.5%	488	100.0%	513	379	282.7%
Dialysis Visits	235	39.7%	337	60.3%	592	100.0%	669	434	184.6%
Cardiac Caths	62	76.5%	19	23.5%	81	100.0%	85	23	36.3%
Radiation Treatments	150	16.4%	763	83.6%	913	100.0%	997	847	564.5%
All Outpatient Events	3,003	49.8%	3,026	50.2%	6,029	100.0%	5,289	2,286	76.1%
Rehabilitation									
Cases	13	48.1%	14	51.9%	27	100.0%	24	11	85.1%
Days	338	55.9%	267	44.1%	605	100.0%	647	309	91.3%
Complex Continuing Care									
Cases	51	92.7%	4	7.3%	55	100.0%	50	(1)	(2.9%)
Days	1,173	80.6%	283	19.4%	1,456	100.0%	1,121	(52)	(4.4%)
Adult Mental Health									
Cases	75	88.2%	10	11.8%	85	100.0%	69	(6)	(7.6%)
Days	1,023	81.8%	227	18.2%	1,250	100.0%	1,232	209	20.4%

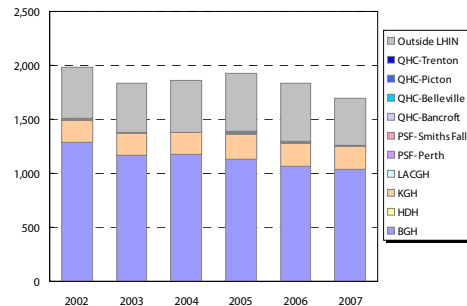
Rate (/1,000) of Inpatient Events by Age Group



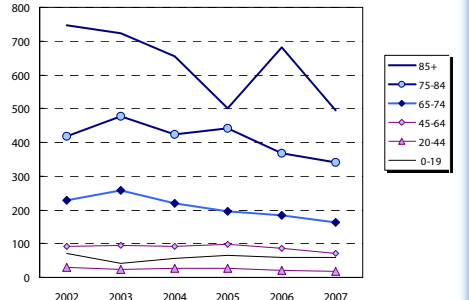
Inpatient Visits by Area Residents by Service Type



Inpatient Visits by Institution



Rate (/1,000) of Inpatient Events by Age Group



Hospital In-Patient Utilization