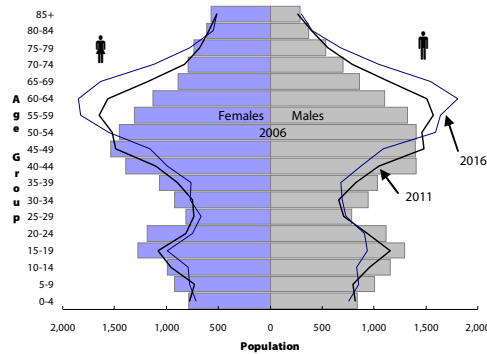


# South East Local Health Integration Network (LHIN) Sub-LHIN Planning Area Profile: Smiths Falls, Perth, Lanark

## Quick Facts:

Size: 1,400 km<sup>2</sup>  
 Population (2006)  
 Total: 33,900  
 Aged 65+: 6,340  
 % 65+: 18.7%  
 Density: 24.2 persons/km<sup>2</sup>

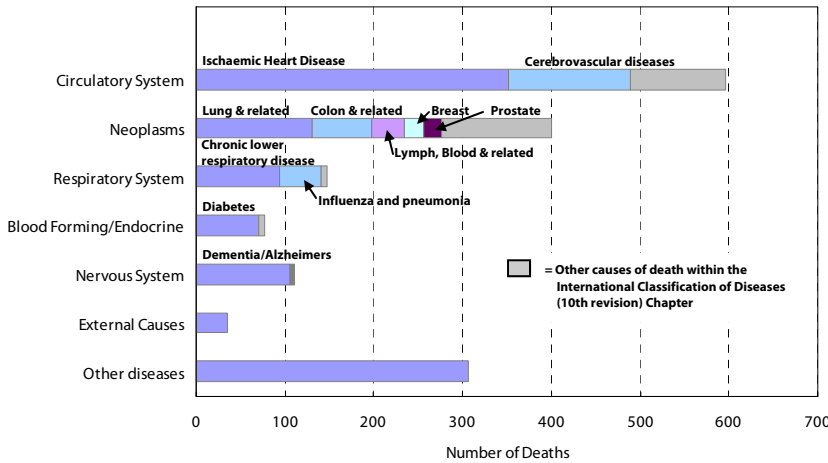
Age Distribution, 2006, 2011 and 2016 (projected)



## Demography

Year	Smiths Falls, Perth, Lanark	South East LHIN	Ontario	Percentage of Total Population		
				Smiths Falls, Perth, Lanark	South East LHIN	Ontario
<b>Population Counts</b>						
Total Population						
2006	35,932	482,078	12,705,344			
2009	35,340	486,101	13,050,754			
2011	34,919	492,452	13,349,125			
2016	35,577	510,626	14,149,965			
<b>Aged 65+</b>						
2006	6,344	80,630	1,649,293	17.7%	16.7%	13.0%
2009	6,688	86,097	1,770,571	18.9%	17.7%	13.6%
2011	6,948	90,168	1,864,941	19.9%	18.3%	14.0%
2016	8,573	105,224	2,214,279	24.1%	20.6%	15.6%
<b>Aged 75+</b>						
2006	3,108	37,269	781,257	8.6%	7.7%	6.1%
2009	3,062	38,990	837,672	8.7%	8.0%	6.4%
2011	3,008	40,324	871,594	8.6%	8.2%	6.5%
2016	3,227	44,307	959,871	9.1%	8.7%	6.8%
<b>Aged 85+</b>						
2006	858	9,648	192,104	2.4%	2.0%	1.5%
2009	826	10,718	228,156	2.3%	2.2%	1.7%
2011	779	11,302	249,961	2.2%	2.3%	1.9%
2016	815	12,494	294,008	2.3%	2.4%	2.1%

Leading Causes of Death in the Sub-LHIN Planning area, 2001-2004



## Census Characteristics

	Smiths Falls, Perth, Lanark	South East LHIN	Ontario
No certificate, degree or diploma (age 25+)	19.4%	20.0%	18.7%
Completed post-secondary education (age 25+)	53.4%	53.4%	56.8%
Unemployment rate (age 15+)	6.3%	6.2%	6.4%
Labour force participation rate (age 15+)	61.4%	62.4%	67.1%
Proportion of population living in low income	10.5%	11.9%	14.7%
English Mother tongue	94.1%	91.5%	69.8%
French Mother tongue	3.2%	2.7%	4.4%
Immigrants	6.3%	9.3%	28.3%
Recent Immigrants (5 years)	0.4%	0.8%	4.8%
Visible minorities	0.9%	3.3%	22.8%
Aboriginal Identity	2.8%	2.8%	2.0%

## Health Status

	Leeds, Grenville & Lanark District Health Unit <sup>1</sup>		South East LHIN		Ontario	
	Total Population	Aged 65 and Older	Total Population	Aged 65 and Older	Total Population	Aged 65 and Older
<b>Overall Health Status</b>						
Self-rated Health: Very Good or Excellent	54.8 (49.2 - 60.3)	38.2 (26.6 - 49.7)	54.2 (50.4 - 58)	40.5 (34.5 - 46.5)	59.9 (58.9 - 60.9)	37.9 (35.9 - 40)
Activity Limitation	47.2 (41.7 - 52.7)	67.2 (57.6 - 76.8)	43.6 (40.3 - 46.9)	62.7 (56.2 - 69.1)	33.5 (32.6 - 34.4)	59.1 (57 - 61.3)
<b>Use of Preventive Care</b>						
Received Flu Shot In Past Year	44.6 (38.8 - 50.3)	70.9 (58.9 - 82.9)	46.9 (43.1 - 50.7)	70.3 (64.1 - 76.6)	35.9 (35 - 36.8)	70.1 (68.2 - 72)
Contact With Medical Doctor In Past Year	79.1 (74.8 - 83.3)	89.5 (82.3 - 96.7)	80.8 (78.2 - 83.4)	91.6 (88.3 - 94.9)	81.4 (80.6 - 82.2)	90.5 (89.4 - 91.7)
<b>Health Practices</b>						
Daily Smokers	21.6 (17.2 - 26)	--	22.3 (19.3 - 25.4)	11.4 <sup>*</sup> (7.6 - 15.2)	16.3 (15.6 - 17)	7.7 (6.7 - 8.8)
Exposed To Second Hand Smoke In Home	12.4 <sup>*</sup> (7.5 - 17.3)	--	11.7 (8.6 - 14.7)	--	6.1 (5.6 - 6.6)	4.6 (3.5 - 5.6)
Heavy Alcohol Consumption	23.0 (17 - 28.9)	--	22.1 (18.6 - 25.6)	7.5 <sup>*</sup> (3.6 - 11.5)	21.7 (20.8 - 22.6)	7.1 (5.7 - 8.5)
Obese Or Overweight	52.1 (46.6 - 57.6)	61.7 (49.8 - 73.6)	53.8 (49.8 - 57.8)	54.7 (48.3 - 61)	49.6 (48.6 - 50.6)	53.4 (51.3 - 55.6)
Physically Inactive	41.9 (36.4 - 47.5)	45.1 (35.3 - 54.9)	44.5 (41 - 48.1)	53.3 (47 - 59.7)	49.0 (48 - 50.1)	54.2 (52.2 - 56.3)
Consumes Fruits / Vegetables 5+ Times A Day	38.5 (33.3 - 43.7)	44.2 (33.8 - 54.6)	42.8 (39.3 - 46.3)	49.0 (42.3 - 55.6)	39.7 (38.7 - 40.8)	41.6 (39.4 - 43.7)
Has A Lot Of Stress (Age 18+)	24.8 (19.7 - 29.9)	16.1 <sup>*</sup> (6.6 - 25.6)	23.9 (21.2 - 26.7)	8.7 <sup>*</sup> (4.9 - 12.5)	22.5 (21.7 - 23.3)	10.9 (9.6 - 12.2)
<b>Chronic Conditions</b>						
Arthritis / Rheumatism	25.2 (20.8 - 29.7)	48.7 (37.1 - 60.3)	25.6 (22.7 - 28.6)	51.9 (45.6 - 58.2)	16.4 (15.8 - 17)	47.1 (45.1 - 49.1)
Diabetes	7.1 (4.8 - 9.3)	20.9 <sup>*</sup> (11.5 - 30.3)	7.0 (5.5 - 8.6)	19.6 (14.6 - 24.5)	6.1 (5.6 - 6.5)	16.9 (15.2 - 18.6)
Asthma	11.9 <sup>*</sup> (7.7 - 16)	--	10.0 (7.8 - 12.3)	9.2 <sup>*</sup> (5.7 - 12.7)	8.2 (7.7 - 8.8)	7.3 (6.3 - 8.3)
High Blood Pressure	18.2 (14.6 - 21.7)	45.0 (35 - 55.1)	19.8 (17.3 - 22.3)	49.0 (42 - 56)	16.4 (15.8 - 17.1)	47.2 (45.1 - 49.3)

Source: Canadian Community Health Survey (CCHS), 2007

Numbers in brackets represent the 95% confidence intervals (CI) around the estimates.

<sup>1</sup>CCHS estimates are not available for sub-LHIN planning areas. Estimates for the Leeds, Grenville and Lanark District Health Unit are used for this profile.

-- Because of high sampling variability this estimate is not available

\* Value is significantly different than the provincial estimate

Estimates are for the population aged 12 or older, unless otherwise indicated.



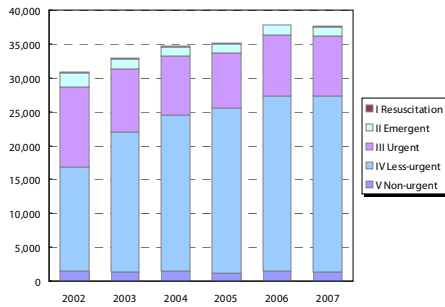
Ontario  
Local Health Integration  
Network

southeasthin.on.ca

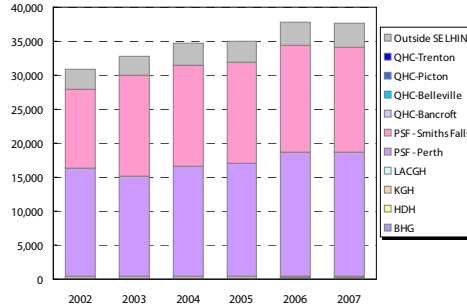
# Sub-LHIN Planning Area Profile (cont'd): Smiths Falls, Perth, Lanark

## Emergency Department Utilization

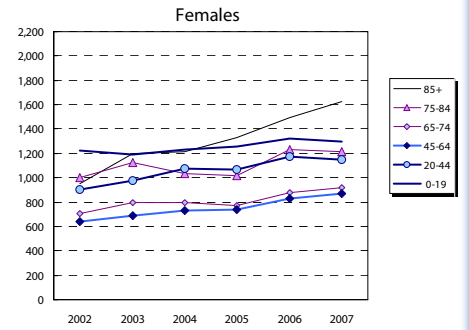
ED Visits by Area Residents by CTAS Level



ED Visits by Institution



Rate (/1,000) of ED Visits by Age Group



Community Support Services (selected)

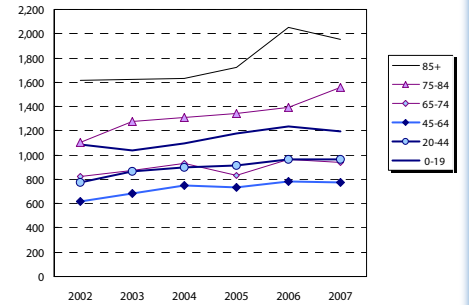
Head Office Location of Provider	Caregiver Support all Services (hours)		Meals on Wheels (meals)		Transportation (1-way trips)	
	2006	2012	2006	2012	2006	2012
Addington N/C Frontenac	1,160	2,015	5,110	2,968	3,130	2,858
Belleville	7,077	12,827	18,800	20,990	5,858	5,715
Brockville	2,590	2,970	14,000	23,111	4,500	8,015
Central Hastings	588	-	4,100	4,867	2,800	3,289
Kingston	5,109	-	125,063	900	900	-
North Hastings	2,600	4,695	4,500	7,573	6,500	9,419
Prince Edward County	3,822	7,503	15,000	27,597	1,525	2,346
Quinte West	26,109	58,984	49,675	128,120	9,380	19,223
Smiths Falls, Perth, Lanark	10,744	8,150	50,860	68,389	30,559	46,063
Tyendinaga Napanee	2,780	1,101	9,500	10,148	13,000	16,205
South East LHIN	62,579	95,927	171,545	285,078	78,152	110,430

Community Care Access Centre (CCAC)

Services	2007/08	2012/13	Change 07-12	
	Actual	Projected	#	%
Admissions	8,251	11,396	3,145	38.1%
In-Home Acute	44,307	43,457	( 850)	(1.9%)
In-Home Maintenance	216,305	228,140	11,835	5.5%
In-Home Rehab	31,389	29,826	(1,563)	(5.0%)
In-Home End-of-Life	14,559	14,177	( 382)	(2.6%)
In-Home LTC	64,034	67,614	3,580	5.6%
Residential	1,406	1,394	( 12)	(0.8%)
<b>Total</b>	<b>372,000</b>	<b>384,608</b>	<b>12,608</b>	<b>3.4%</b>

\*Community Health Centre (CHC) Actual and Projected pending verification with local data management personnel

Rate (/1,000) of ED Visits by Age Group



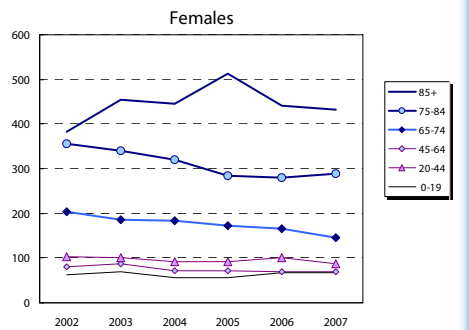
Homemaking/Personal Supp/Attendant/Respite-Phys Dis Outreach

Area of Service Provision	2006	2012
Hastings/Prince Edward	34,000	17,616
Frontenac/Leeds Grenville/Lanark	81,972	76,044
South East LHIN	115,972	93,660

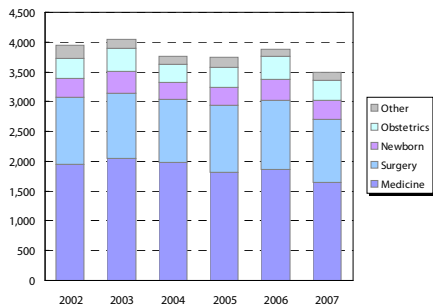
Hospital-based Services

	2007/08 Actual				2012/13 Projected			
	To SE LHIN Hospitals	Outside SE LHIN	Total	% of Total	To SE LHIN Hospitals	Outside SE LHIN	Total	% of Total
<b>ER Visits</b>	34,170	3,513	37,683	100%	36,157	1,987	38,144	100%
<b>IP Events (Acute Institutions)</b>								
No. of Separations	2,585	909	3,494	100%	2,623	38	2,661	100%
Acute Days of Stay	18,592	5,329	23,921	100%	17,956	( 636)	17,320	100%
ALC <sup>1</sup> Separations	97	15	112	100%	105	8	113	100%
ALC Days of Stay	2,975	177	3,152	100%	2,912	( 63)	2,849	100%
<b>Outpatient Events/Clinic Visits</b>								
Surgical/PARR <sup>2</sup>	3,516	979	4,495	100%	4,824	1,308	6,132	100%
Oncology Visits	396	669	1,065	100%	1,094	698	1,792	100%
Dialysis Visits	2,582	54	2,636	100%	2,828	246	3,074	100%
Cardiac Caths	67	73	140	100%	154	87	241	100%
Radiation Treatments	337	2,267	2,604	100%	2,791	2,454	5,245	100%
All Outpatient Events	6,898	4,824	11,722	100%	11,691	4,793	16,484	100%
<b>Rehabilitation</b>								
Cases	5	25	30	100%	5	0	5	100%
Days	229	323	552	100%	160	( 69)	93	100%
<b>Complex Continuing Care</b>								
Cases	48	5	53	100%	51	3	54	100%
Days	1,588	22	1,610	100%	2,521	933	3,454	100%
<b>Adult Mental Health</b>								
Cases	68	20	88	100%	68	0	68	100%
Days	932	439	1,371	100%	1,348	416	1,764	100%

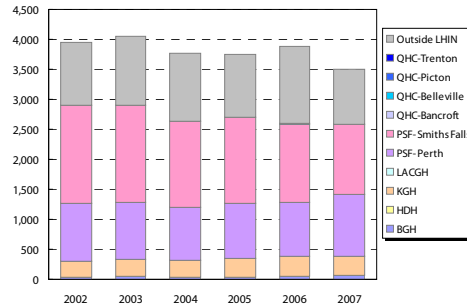
Rate (/1,000) of Inpatient Events by Age Group



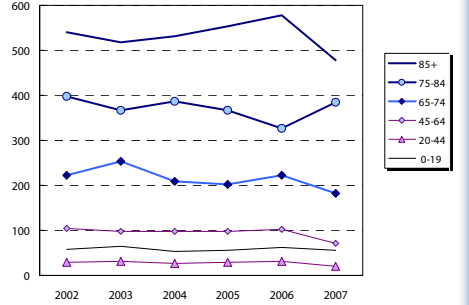
Inpatient Visits by Area Residents by Service Type



Inpatient Visits by Institution



Rate (/1,000) of Inpatient Events by Age Group



## Hospital In-Patient Utilization