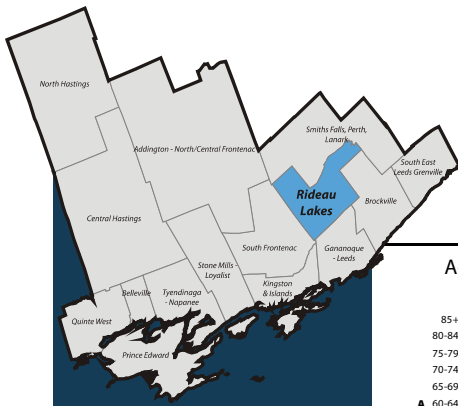


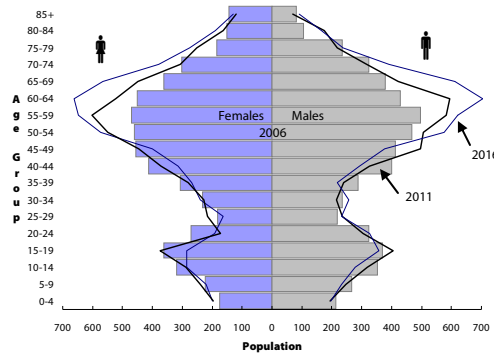
# South East Local Health Integration Network (LHIN) Sub-LHIN Planning Area Profile: Rideau Lakes



## Quick Facts:

Size: 710 km<sup>2</sup>  
 Population (2006)  
 Total: 11,000  
 Aged 65+: 2,270  
 % 65+: 20.6%  
 Density: 15.4 persons/km<sup>2</sup>

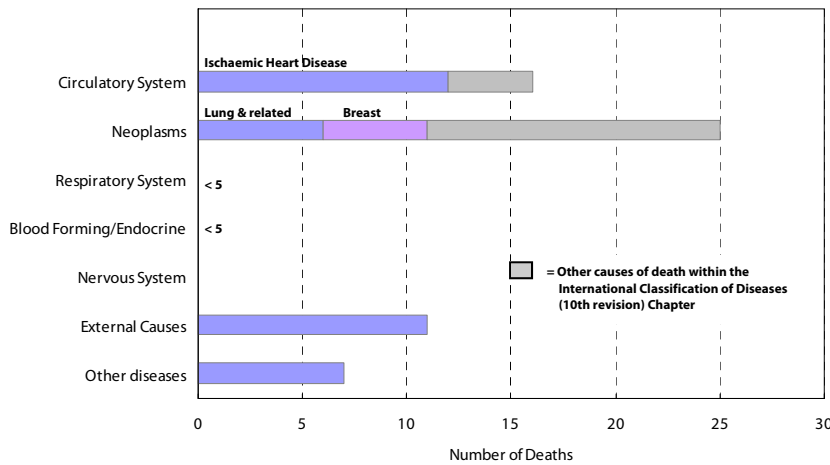
Age Distribution, 2006, 2011 and 2016 (projected)



## Demography

Year	Rideau Lakes	South East LHIN	Ontario	Percentage of Total Population		
				Rideau Lakes	South East LHIN	Ontario
				<b>Population Counts</b>		
				<b>Total Population</b>		
2006	11,054	482,078	12,705,344			
2009	11,335	486,101	13,050,754			
2011	11,639	492,452	13,349,125			
2016	12,153	510,626	14,149,965			
				<b>Aged 65+</b>		
2006	2,266	80,630	1,649,293	20.5%	16.7%	13.0%
2009	2,417	86,097	1,770,571	21.3%	17.7%	13.6%
2011	2,489	90,168	1,864,941	21.4%	18.3%	14.0%
2016	3,034	105,224	2,214,279	25.0%	20.6%	15.6%
				<b>Aged 75+</b>		
2006	901	37,269	781,257	8.2%	7.7%	6.1%
2009	960	38,990	837,672	8.5%	8.0%	6.4%
2011	996	40,324	871,594	8.6%	8.2%	6.5%
2016	1,091	44,307	959,871	9.0%	8.7%	6.8%
				<b>Aged 85+</b>		
2006	225	9,648	192,104	2.0%	2.0%	1.5%
2009	209	10,718	228,156	1.8%	2.2%	1.7%
2011	188	11,302	249,961	1.6%	2.3%	1.9%
2016	222	12,494	294,008	1.8%	2.4%	2.1%

Leading Causes of Death in the Sub-LHIN Planning area, 2001-2004



## Census Characteristics

	Rideau Lakes	South East LHIN	Ontario
No certificate, degree or diploma (age 25+)	19.8%	20.0%	18.7%
Completed post-secondary education (age 25+)	54.1%	53.4%	56.8%
Unemployment rate (age 15+)	5.2%	6.2%	6.4%
Labour force participation rate (age 15+)	60.8%	62.4%	67.1%
Proportion of population living in low income	7.2%	11.9%	14.7%
English Mother tongue	94.8%	91.5%	69.8%
French Mother tongue	2.6%	2.7%	4.4%
Immigrants	6.6%	9.3%	28.3%
Recent Immigrants (5 years)	0.4%	0.8%	4.8%
Visible minorities	1.0%	3.3%	22.8%
Aboriginal Identity	2.9%	2.8%	2.0%

## Health Status

	Leeds, Grenville & Lanark District Health Unit <sup>1</sup>				South East LHIN				Ontario				
	Total Population		Aged 65 and Older		Total Population		Aged 65 and Older		Total Population		Aged 65 and Older		
<b>Overall Health Status</b>													
Self-rated Health: Very Good or Excellent	54.8	(49.2 - 60.3)	38.2	(26.6 - 49.7)	54.2	(50.4 - 58)	40.5	(34.5 - 46.5)	59.9	(58.9 - 60.9)	37.9	(35.9 - 40)	
Activity Limitation	47.2	(41.7 - 52.7)	67.2	(57.6 - 76.8)	43.6	(40.3 - 46.9)	62.7	(56.2 - 69.1)	33.5	(32.6 - 34.4)	59.1	(57 - 61.3)	
<b>Use of Preventive Care</b>													
Received Flu Shot In Past Year	44.6	(38.8 - 50.3)	70.9	(58.9 - 82.9)	46.9	(43.1 - 50.7)	70.3	(64.1 - 76.6)	35.9	(35 - 36.8)	70.1	(68.2 - 72)	
Contact With Medical Doctor In Past Year	79.1	(74.8 - 83.3)	89.5	(82.3 - 96.7)	80.8	(78.2 - 83.4)	91.6	(88.3 - 94.9)	81.4	(80.6 - 82.2)	90.5	(89.4 - 91.7)	
<b>Health Practices</b>													
Daily Smokers	21.6	(17.2 - 26)	--		22.3	(19.3 - 25.4)	11.4 <sup>*</sup>	(7.6 - 15.2)	16.3	(15.6 - 17)	7.7	(6.7 - 8.8)	
Exposed To Second Hand Smoke In Home	12.4 <sup>*</sup>	(7.5 - 17.3)	--		11.7	(8.6 - 14.7)	--		6.1	(5.6 - 6.6)	4.6	(3.5 - 5.6)	
Heavy Alcohol Consumption	23.0	(17 - 28.9)	--		22.1	(18.6 - 25.6)	7.5 <sup>*</sup>	(3.6 - 11.5)	21.7	(20.8 - 22.6)	7.1	(5.7 - 8.5)	
Obese Or Overweight	52.1	(46.6 - 57.6)	61.7	(49.8 - 73.6)	53.8	(49.8 - 57.8)	54.7	(48.3 - 61)	49.6	(48.6 - 50.6)	53.4	(51.3 - 55.6)	
Physically Inactive	41.9	(36.4 - 47.5)	45.1	(35.3 - 54.9)	44.5	(41 - 48.1)	53.3	(47 - 59.7)	49.0	(48 - 50.1)	54.2	(52.2 - 56.3)	
Consumes Fruits / Vegetables 5+ Times A Day	38.5	(33.3 - 43.7)	44.2	(33.8 - 54.6)	42.8	(39.3 - 46.3)	49.0	(42.3 - 55.6)	39.7	(38.7 - 40.8)	41.6	(39.4 - 43.7)	
Has A Lot Of Stress (Age 18+)	24.8	(19.7 - 29.9)	16.1 <sup>*</sup>	(6.6 - 25.6)	23.9	(21.2 - 26.7)	8.7 <sup>*</sup>	(4.9 - 12.5)	22.5	(21.7 - 23.3)	10.9	(9.6 - 12.2)	
<b>Chronic Conditions</b>													
Arthritis / Rheumatism	25.2	(20.8 - 29.7)	48.7	(37.1 - 60.3)	25.6	(22.7 - 28.6)	51.9	(45.6 - 58.2)	16.4	(15.8 - 17)	47.1	(45.1 - 49.1)	
Diabetes	7.1	(4.8 - 9.3)	20.9 <sup>*</sup>	(11.5 - 30.3)	7.0	(5.5 - 8.6)	19.6	(14.6 - 24.5)	6.1	(5.6 - 6.5)	16.9	(15.2 - 18.6)	
Asthma	11.9 <sup>*</sup>	(7.7 - 16)	--		10.0	(7.8 - 12.3)	9.2 <sup>*</sup>	(5.7 - 12.7)	8.2	(7.7 - 8.8)	7.3	(6.3 - 8.3)	
High Blood Pressure	18.2	(14.6 - 21.7)	45.0	(35 - 55.1)	19.8	(17.3 - 22.3)	49.0	(42 - 56)	16.4	(15.8 - 17.1)	47.2	(45.1 - 49.3)	

Source: Canadian Community Health Survey (CCHS), 2007

Numbers in brackets represent the 95% confidence intervals (CI) around the estimates.

<sup>1</sup>CCHS estimates are not available for sub-LHIN planning areas. Estimates for the Leeds, Grenville and Lanark District Health Unit are used for this profile.

-- Because of high sampling variability this estimate is not available

\* Value is significantly different than the provincial estimate

Estimates are for the population aged 12 or older, unless otherwise indicated.

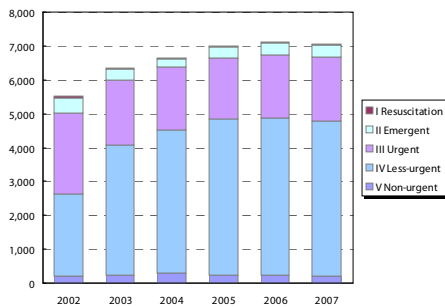


Ontario  
Local Health Integration  
Network

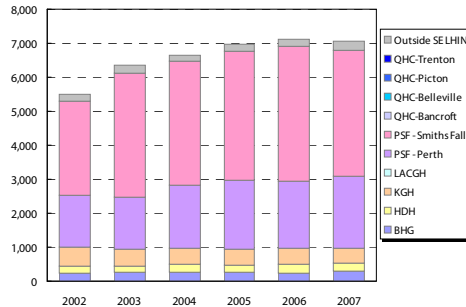
southeasthin.on.ca

**Emergency Department Utilization**

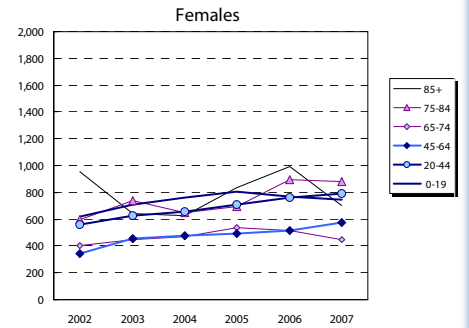
ED Visits by Area Residents by CTAS Level



ED Visits by Institution



Rate (/1,000) of ED Visits by Age Group



Community Support Services (selected)

Head Office Location of Provider	Caregiver Support all Services (hours)		Meals on Wheels (meals)		Transportation (1-way trips)	
	2006	2012	2006	2012	2006	2012
Addington N/C Frontenac	1,160	2,015	5,110	2,968	3,130	2,858
Belleville	7,077	12,827	18,800	20,990	5,858	5,715
Brockville	2,590	2,970	14,000	23,111	4,500	8,015
Central Hastings	588	-	4,100	4,867	2,800	3,289
Kingston	5,109	-	125,063	900	900	-
North Hastings	2,600	4,695	4,500	7,573	6,500	9,419
Prince Edward County	3,822	7,503	15,000	27,597	1,525	2,346
Quinte West	26,109	58,984	49,675	128,120	9,380	19,223
Smiths Falls, Perth, Lanark	10,744	8,150	50,860	68,389	30,559	46,063
Tyendinaga Napanee	2,780	1,101	9,500	10,148	13,000	16,205
South East LHIN	62,579	95,927	171,545	285,078	78,152	110,430

Community Care Access Centre (CCAC)

Services	2007/08	2012/13	Change 07-12	
	Actual	Projected	#	%
Admissions	8,251	11,396	3,145	38.1%
In-Home Acute	44,307	43,457	( 850)	(1.9%)
In-Home Maintenance	216,305	228,140	11,835	5.5%
In-Home Rehab	31,389	29,826	(1,563)	(5.0%)
In-Home End-of-Life	14,559	14,177	( 382)	(2.6%)
In-Home LTC	64,034	67,614	3,580	5.6%
Residential	1,406	1,394	( 12)	(0.8%)
<b>Total</b>	<b>372,000</b>	<b>384,608</b>	<b>12,608</b>	<b>3.4%</b>

\*Community Health Centre (CHC) Actual and Projected pending verification with local data management personnel

Homemaking/Personal Supp/Attendant/Respite-Phys Dis Outreach

Area of Service Provision	2006	2012
Hastings/Prince Edward	34,000	17,616
Frontenac/Leeds Grenville/Lanark	81,972	76,044
South East LHIN	115,972	93,660

Hospital-based Services

	2007/08 Actual				2012/13 Projected				
	To SELHIN Hospitals	Outside SELHIN	Total	% of Total	To SELHIN Hospitals	Outside SELHIN	Total	% of Total	
<b>ER Visits</b>	6,796	96.3%	260	3.7%	7,056	100%	7,423	627	9.2%
<b>IP Events (Acute Institutions)</b>									
No. of Separations	770	85.8%	127	14.2%	897	100%	828	58	7.5%
Acute Days of Stay	4,855	84.4%	899	15.6%	5,754	100%	5,257	402	8.3%
ALC <sup>1</sup> Separations	24	92.3%	2	7.7%	26	100%	27	3	10.5%
ALC Days of Stay	804	98.9%	9	1.1%	813	100%	843	39	4.9%
<b>Outpatient Events/Clinic Visits</b>									
Surgical/PARR <sup>2</sup>	1,287	89.1%	158	10.9%	1,445	100%	1,541	254	19.8%
Oncology Visits	244	82.4%	52	17.6%	296	100%	361	117	47.8%
Dialysis Visits	542	95.8%	24	4.2%	566	100%	555	13	2.4%
Cardiac Caths	39	78.0%	11	22.0%	50	100%	45	6	14.4%
Radiation Treatments	508	73.3%	185	26.7%	693	100%	628	120	23.6%
All Outpatient Events	2,620	63.0%	1,541	37.0%	4,161	100%	3,130	510	19.4%
<b>Rehabilitation</b>									
Cases	5	55.6%	4	44.4%	9	100%	7	2	42.9%
Days	124	74.3%	43	25.7%	167	100%	186	62	50.3%
<b>Complex Continuing Care</b>									
Cases	17	89.5%	2	10.5%	19	100%	23	6	32.8%
Days	682	85.0%	120	15.0%	802	100%	947	265	38.8%
<b>Adult Mental Health</b>									
Cases	31	93.9%	2	6.1%	33	100%	32	1	1.8%
Days	429	96.2%	17	3.8%	446	100%	373	( 56)	(12.9%)

Community Mental Health and Addictions

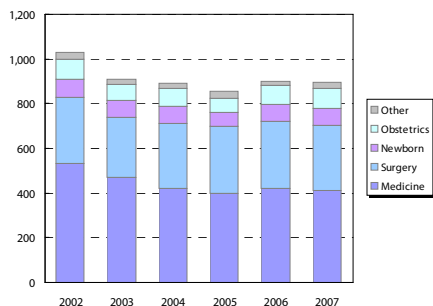
Individuals Served (2007)

Head Office Location of Provider	2007
Belleville	4,629
Brockville	5,392
Kingston & Islands	7,560
Smiths Falls, Perth, Lanark	9,091
Tyendinaga Napanee	1,758
South East LHIN	28,430

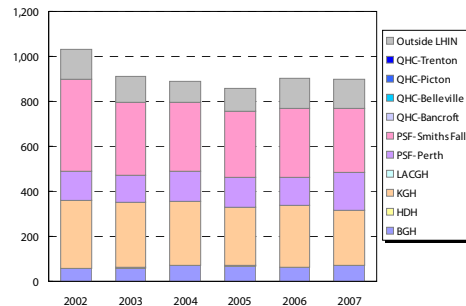
Clients with Open Admission to program...

County	Problem Gambling		Substance Abuse	
	2004	2008	2004	2008
Frontenac	39	86	1,462	2,023
Hastings	21	15	811	1,043
Lanark	7	26	290	600
Leeds-Gren.	35	50	429	806
Lenn. & Add.	12	15	489	841
Prince Ed.	<5	<5	105	151

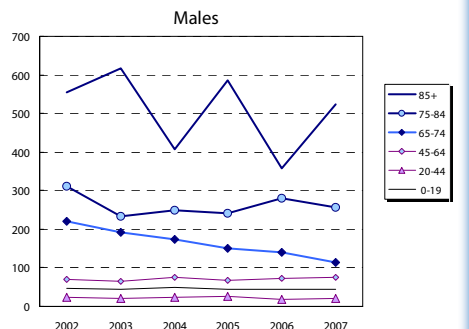
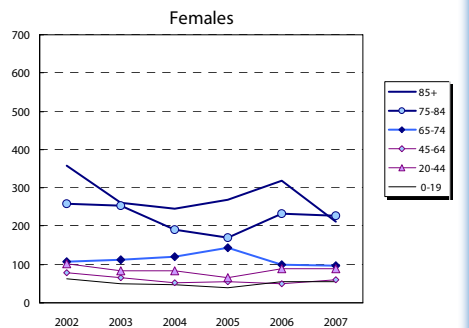
Inpatient Visits by Area Residents by Service Type



Inpatient Visits by Institution



Rate (/1,000) of Inpatient Events by Age Group



**Hospital In-Patient Utilization**