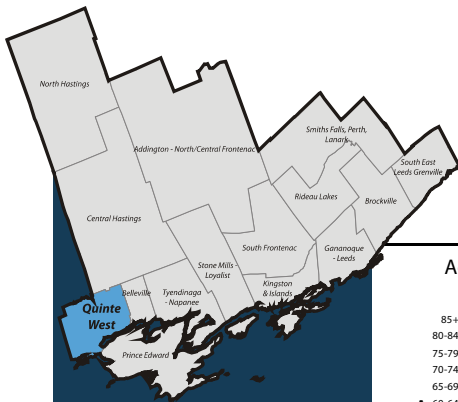


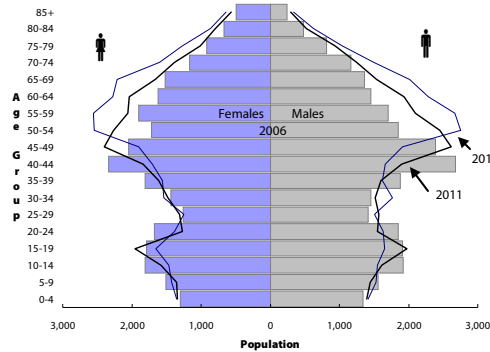
# South East Local Health Integration Network (LHIN) Sub-LHIN Planning Area Profile: Quinte West



## Quick Facts:

Size: 720 km<sup>2</sup>  
 Population (2006)  
 Total: 52,950  
 Aged 65+: 8,830  
 % 65+: 16.7%  
 Density: 73.9 persons/km<sup>2</sup>

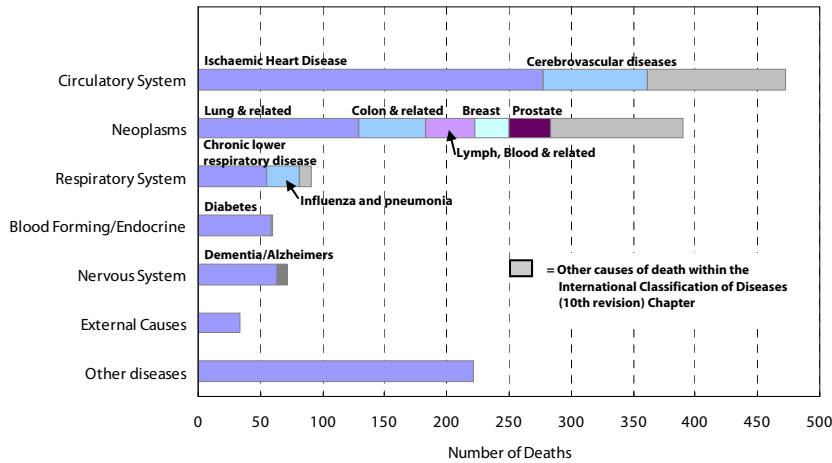
Age Distribution, 2006, 2011 and 2016 (projected)



## Demography

Year	Quinte West	South East LHIN	Ontario	Percentage of Total Population		
				Quinte West	South East LHIN	Ontario
				<b>Population Counts</b>		
				<b>Total Population</b>		
2006	54,439	482,078	12,705,344			
2009	55,255	486,101	13,050,754			
2011	56,130	492,452	13,349,125			
2016	58,662	510,626	14,149,965			
				<b>Aged 65+</b>		
2006	8,826	80,630	1,649,293	16.2%	16.7%	13.0%
2009	9,508	86,097	1,770,571	17.2%	17.7%	13.6%
2011	9,954	90,168	1,864,941	17.7%	18.3%	14.0%
2016	12,096	105,224	2,214,279	20.6%	20.6%	15.6%
				<b>Aged 75+</b>		
2006	3,624	37,269	781,257	6.7%	7.7%	6.1%
2009	3,921	38,990	837,672	7.1%	8.0%	6.4%
2011	4,126	40,324	871,594	7.4%	8.2%	6.5%
2016	4,773	44,307	959,871	8.1%	8.7%	6.8%
				<b>Aged 85+</b>		
2006	735	9,648	192,104	1.4%	2.0%	1.5%
2009	808	10,718	228,156	1.5%	2.2%	1.7%
2011	859	11,302	249,961	1.5%	2.3%	1.9%
2016	975	12,494	294,008	1.7%	2.4%	2.1%

Leading Causes of Death in the Sub-LHIN Planning area, 2001-2004



## Census Characteristics

	Quinte West	South East LHIN	Ontario
No certificate, degree or diploma (age 25+)	21.9%	20.0%	18.7%
Completed post-secondary education (age 25+)	49.1%	53.4%	56.8%
Unemployment rate (age 15+)	5.7%	6.2%	6.4%
Labour force participation rate (age 15+)	62.3%	62.4%	67.1%
Proportion of population living in low income	11.1%	11.9%	14.7%
English Mother tongue	91.5%	91.5%	69.8%
French Mother tongue	4.3%	2.7%	4.4%
Immigrants	8.2%	9.3%	28.3%
Recent Immigrants (5 years)	0.4%	0.8%	4.8%
Visible minorities	2.0%	3.3%	22.8%
Aboriginal Identity	2.6%	2.8%	2.0%

## Health Status

	Hastings and Prince Edward Counties Health Unit <sup>1</sup>		South East LHIN		Ontario	
	Total Population	Aged 65 and Older	Total Population	Aged 65 and Older	Total Population	Aged 65 and Older
<b>Overall Health Status</b>						
Self-rated Health: Very Good or Excellent	53.5 (46.9 - 60)	38.5 (29.7 - 47.3)	54.2 (50.4 - 58)	40.5 (34.5 - 46.5)	59.9 (58.9 - 60.9)	37.9 (35.9 - 40)
Activity Limitation	43.0 (37.6 - 48.5)	61.6 (50.7 - 72.5)	43.6 (40.3 - 46.9)	62.7 (56.2 - 69.1)	33.5 (32.6 - 34.4)	59.1 (57 - 61.3)
<b>Use of Preventive Care</b>						
Received Flu Shot In Past Year	48.9 (41.9 - 55.9)	61.8 (52.4 - 71.2)	46.9 (43.1 - 50.7)	70.3 (64.1 - 76.6)	35.9 (35 - 36.8)	70.1 (68.2 - 72)
Contact With Medical Doctor In Past Year	79.1 (73.9 - 84.2)	90.9 (85 - 96.7)	80.8 (78.2 - 83.4)	91.6 (88.3 - 94.9)	81.4 (80.6 - 82.2)	90.5 (89.4 - 91.7)
<b>Health Practices</b>						
Daily Smokers	21.1 (15.6 - 26.6)	12.4 <sup>*</sup> (6.9 - 17.9)	22.3 (19.3 - 25.4)	11.4 <sup>*</sup> (7.6 - 15.2)	16.3 (15.6 - 17)	7.7 (6.7 - 8.8)
Exposed To Second Hand Smoke In Home	12.4 <sup>*</sup> (7.1 - 17.7)	--	11.7 (8.6 - 14.7)	--	6.1 (5.6 - 6.6)	4.6 (3.5 - 5.6)
Heavy Alcohol Consumption	21.3 (14.5 - 28.2)	--	22.1 (18.6 - 25.6)	7.5 <sup>*</sup> (3.6 - 11.5)	21.7 (20.8 - 22.6)	7.1 (5.7 - 8.5)
Obese Or Overweight	56.5 (49.7 - 63.4)	53.2 (42.4 - 64)	53.8 (49.8 - 57.8)	54.7 (48.3 - 61)	49.6 (48.6 - 50.6)	53.4 (51.3 - 55.6)
Physically Inactive	42.7 (36.9 - 48.5)	60.9 (51.4 - 70.3)	44.5 (41 - 48.1)	53.3 (47 - 59.7)	49.0 (48 - 50.1)	54.2 (52.2 - 56.3)
Consumes Fruits / Vegetables 5+ Times A Day	43.2 (36 - 50.4)	50.5 (39.8 - 61.1)	42.8 (39.3 - 46.3)	49.0 (42.3 - 55.6)	39.7 (38.7 - 40.8)	41.6 (39.4 - 43.7)
Has A Lot Of Stress (Age 18+)	22.1 (18.1 - 26.2)	--	23.9 (21.2 - 26.7)	8.7 <sup>*</sup> (4.9 - 12.5)	22.5 (21.7 - 23.3)	10.9 (9.6 - 12.2)
<b>Chronic Conditions</b>						
Arthritis / Rheumatism	28.2 (23.4 - 32.9)	51.7 (42 - 61.3)	25.6 (22.7 - 28.6)	51.9 (45.6 - 58.2)	16.4 (15.8 - 17)	47.1 (45.1 - 49.1)
Diabetes	8.0 <sup>*</sup> (4.8 - 11.1)	15.3 <sup>*</sup> (8.6 - 22)	7.0 (5.5 - 8.6)	19.6 (14.6 - 24.5)	6.1 (5.6 - 6.5)	16.9 (15.2 - 18.6)
Asthma	6.1 <sup>*</sup> (3.7 - 8.5)	6.9 <sup>*</sup> (3 - 10.9)	10.0 (7.8 - 12.3)	9.2 <sup>*</sup> (5.7 - 12.7)	8.2 (7.7 - 8.8)	7.3 (6.3 - 8.3)
High Blood Pressure	19.4 (14.7 - 24.1)	47.9 (35.4 - 60.3)	19.8 (17.3 - 22.3)	49.0 (42 - 56)	16.4 (15.8 - 17.1)	47.2 (45.1 - 49.3)

Source: Canadian Community Health Survey (CCHS), 2007

Numbers in brackets represent the 95% confidence intervals (CI) around the estimates.

<sup>1</sup>CCHS estimates are not available for sub-LHIN planning areas. Estimates for the Hastings and Prince Edward Counties Health Unit are used for this profile.

-- Because of high sampling variability this estimate is not available

\* Value is significantly different than the provincial estimate

Estimates are for the population aged 12 or older, unless otherwise indicated.

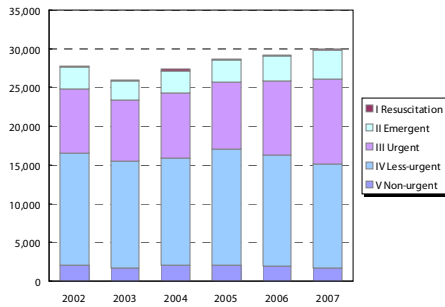


Ontario  
Local Health Integration  
Network

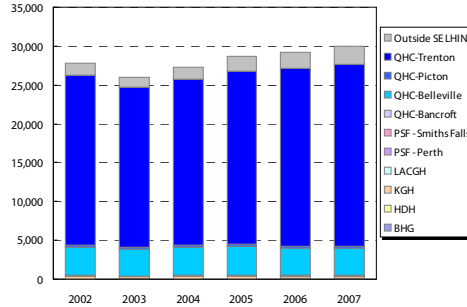
southeasthin.on.ca

**Emergency Department Utilization**

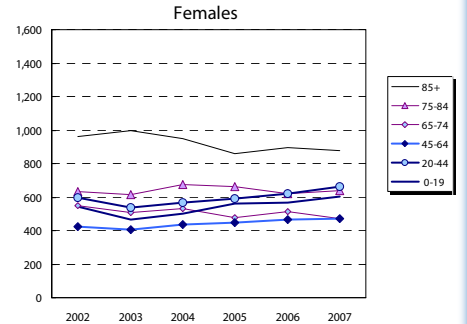
ED Visits by Area Residents by CTAS Level



ED Visits by Institution



Rate (/1,000) of ED Visits by Age Group



Community Support Services (selected)

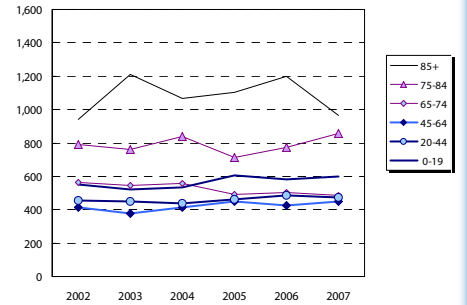
Head Office Location of Provider	Caregiver Support all Services (hours)		Meals on Wheels (meals)		Transportation (1-way trips)	
	2006	2012	2006	2012	2006	2012
Addington N/C Frontenac	1,160	2,015	5,110	2,968	3,130	2,858
Belleville	7,077	12,827	18,800	20,990	5,858	5,715
Brockville	2,590	2,970	14,000	23,111	4,500	8,015
Central Hastings	588	-	4,100	4,867	2,800	3,289
Kingston	5,109	-	125,063	900	900	-
North Hastings	2,600	4,695	4,500	7,573	6,500	9,419
Prince Edward County	3,822	7,503	15,000	27,597	1,525	2,346
Quinte West	26,109	58,984	49,675	128,120	9,380	19,223
Smiths Falls, Perth, Lanark	10,744	8,150	50,860	68,389	30,559	46,063
Tyendinaga Napanee	2,780	1,101	9,500	10,148	13,000	16,205
South East LHIN	62,579	95,927	171,545	285,078	78,152	110,430

Community Care Access Centre (CCAC)

Services	2007/08	2007/08	Change 07-12	
	Actual	Projected	#	%
Admissions	8,251	11,396	3,145	38.1%
<b>In-Home Acute</b>	44,307	43,457	( 850)	(1.9%)
In-Home Maintenance	216,305	228,140	11,835	5.5%
In-Home Rehab	31,389	29,826	(1,563)	(5.0%)
In-Home End-of-Life	14,559	14,177	( 382)	(2.6%)
In-Home LTC	64,034	67,614	3,580	5.6%
Residential	1,406	1,394	( 12)	(0.8%)
<b>Total</b>	<b>372,000</b>	<b>384,608</b>	<b>12,608</b>	<b>3.4%</b>

\*Community Health Centre (CHC) Actual and Projected pending verification with local data management personnel

Rate (/1,000) of ED Visits by Age Group



Homemaking/Personal Supp/Attendant/Respite-Phys Dis Outreach

Area of Service Provision	2006	2012
Hastings/Prince Edward	34,000	17,616
Frontenac/Leeds Grenville/Lanark	81,972	76,044
South East LHIN	115,972	93,660

Community Mental Health and Addictions

Individuals Served (2007)

Head Office Location of Provider	2007
Belleville	4,629
Brockville	5,392
Kingston & Islands	7,560
Smiths Falls, Perth, Lanark	9,091
Tyendinaga Napanee	1,758
South East LHIN	28,430

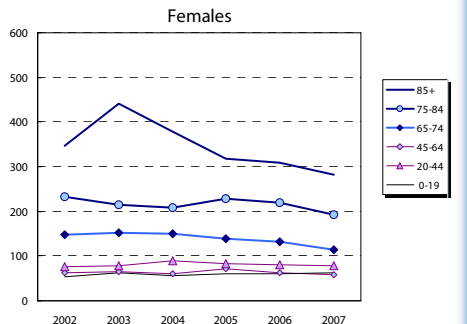
Clients with Open Admission to program...

County	Problem Gambling		Substance Abuse	
	2004	2008	2004	2008
Frontenac	39	86	1,462	2,023
Hastings	21	15	811	1,043
Lanark	7	26	290	600
Leeds-Gren.	35	50	429	806
Lenn. & Add.	12	15	489	841
Prince Ed.	<5	<5	105	151

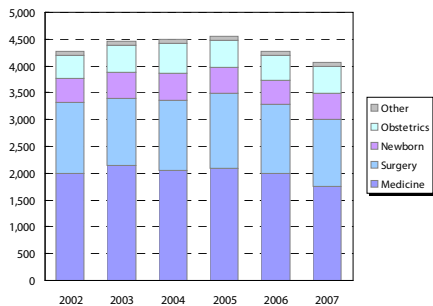
Hospital-based Services

	2007/08 Actual				2007/13 Projected			
	To SELHIN Hospitals	Outside SELHIN	Total	% of Total	To SELHIN Hospitals	Outside SELHIN	Total	% of Total
<b>ER Visits</b>	27,680	2,256	29,936	100%	30,494	2,814	33,308	100%
<b>IP Events (Acute Institutions)</b>								
No. of Separations	3,606	456	4,062	100%	3,978	372	4,350	100%
Acute Days of Stay	18,269	2,783	21,052	100%	20,403	2,134	22,537	100%
ALC Separations	222	11	233	100%	280	58	338	100%
ALC Days of Stay	5,524	136	5,660	100%	5,780	256	6,036	100%
<b>Outpatient Events/Clinic Visits</b>								
Surgical/PARR*	4,462	1,111	5,573	100%	6,016	1,554	7,570	100%
Oncology Visits	1,909	216	2,125	100%	1,978	69	2,047	100%
Dialysis Visits	3,320	242	3,562	100%	4,336	1,016	5,352	100%
Cardiac Caths	227	24	251	100%	240	13	253	100%
Radiation Treatments	1,660	296	1,956	100%	2,194	534	2,728	100%
All Outpatient Events	11,578	6,016	17,594	100%	14,764	3,186	17,950	100%
<b>Rehabilitation</b>								
Cases	30	14	44	100%	42	12	54	100%
Days	1,123	422	1,545	100%	1,568	445	2,013	100%
<b>Complex Continuing Care</b>								
Cases	127	-	127	100%	154	27	181	100%
Days	6,382	-	6,382	100%	9,628	3,246	12,874	100%
<b>Adult Mental Health</b>								
Cases	174	14	188	100%	159	( 15)	144	76.6%
Days	1,931	137	2,068	100%	2,022	91	2,113	102.2%

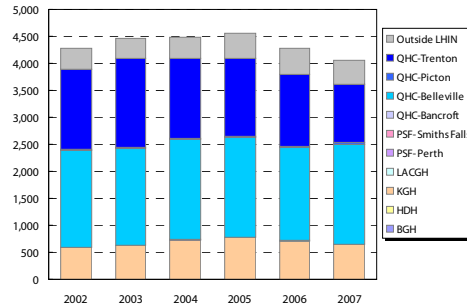
Rate (/1,000) of Inpatient Events by Age Group



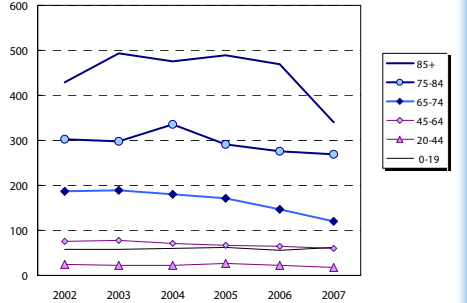
Inpatient Visits by Area Residents by Service Type



Inpatient Visits by Institution



Rate (/1,000) of Inpatient Events by Age Group



**Hospital In-Patient Utilization**