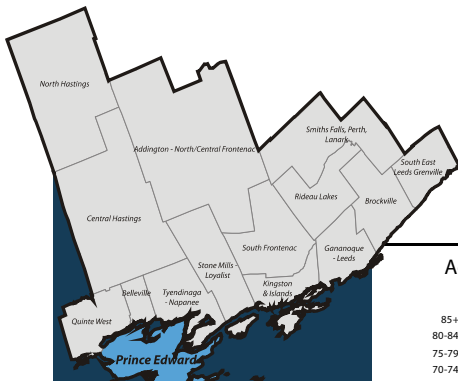


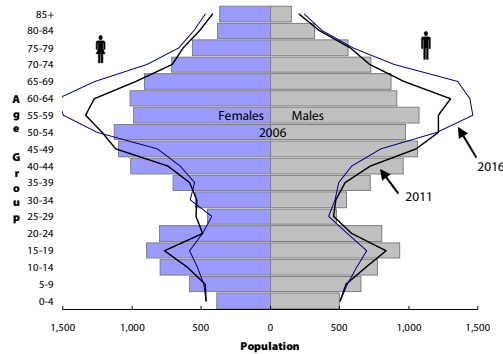
# South East Local Health Integration Network (LHIN) Sub-LHIN Planning Area Profile: Prince Edward County



## Quick Facts:

Size: 1,050 km<sup>2</sup>  
 Population (2006)  
 Total: 25,500  
 Aged 65+: 5,560  
 % 65+: 21.8%  
 Density: 24.3 persons/km<sup>2</sup>

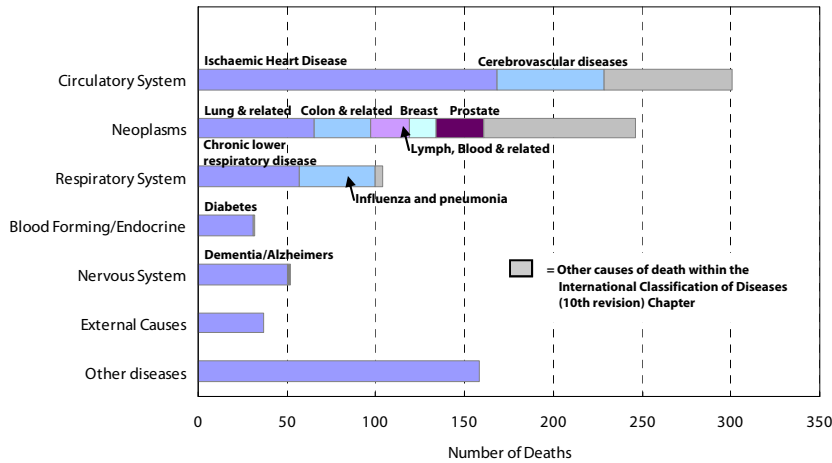
Age Distribution, 2006, 2011 and 2016 (projected)



## Demography

Year	Prince Edward County	South East LHIN	Ontario	Demography		
				Prince Edward County	South East LHIN	Ontario
				<b>Population Counts</b>		
				Total Population		
2006	26,362	482,078	12,705,344			
2009	26,240	486,101	13,050,754			
2011	26,316	492,452	13,349,125			
2016	26,960	510,626	14,149,965			
				<b>Percentage of Total Population</b>		
				Aged 65+		
2006	5,561	80,630	1,649,293	21.1%	16.7%	13.0%
2009	5,863	86,097	1,770,571	22.3%	17.7%	13.6%
2011	6,064	90,168	1,864,941	23.0%	18.3%	14.0%
2016	7,298	105,224	2,214,279	27.1%	20.6%	15.6%
				Aged 75+		
2006	2,335	37,269	781,257	8.9%	7.7%	6.1%
2009	2,524	38,990	837,672	9.6%	8.0%	6.4%
2011	2,702	40,324	871,594	10.3%	8.2%	6.5%
2016	2,895	44,307	959,871	10.7%	8.7%	6.8%
				Aged 85+		
2006	516	9,648	192,104	2.0%	2.0%	1.5%
2009	556	10,718	228,156	2.1%	2.2%	1.7%
2011	628	11,302	249,961	2.4%	2.3%	1.9%
2016	714	12,494	294,008	2.6%	2.4%	2.1%

Leading Causes of Death in the Sub-LHIN Planning area, 2001-2004



## Census Characteristics

	Prince Edward County	South East LHIN	Ontario
No certificate, degree or diploma (age 25+)	19.6%	20.0%	18.7%
Completed post-secondary education (age 25+)	54.1%	53.4%	56.8%
Unemployment rate (age 15+)	6.0%	6.2%	6.4%
Labour force participation rate (age 15+)	59.0%	62.4%	67.1%
Proportion of population living in low income	9.2%	11.9%	14.7%
English Mother tongue	93.9%	91.5%	69.8%
French Mother tongue	1.7%	2.7%	4.4%
Immigrants	9.5%	9.3%	28.3%
Recent Immigrants (5 years)	0.3%	0.8%	4.8%
Visible minorities	1.3%	3.3%	22.8%
Aboriginal Identity	2.4%	2.8%	2.0%

## Health Status

	Hastings and Prince Edward Counties Health Unit <sup>1</sup>		South East LHIN		Ontario	
	Total Population	Aged 65 and Older	Total Population	Aged 65 and Older	Total Population	Aged 65 and Older
<b>Overall Health Status</b>						
Self-rated Health: Very Good or Excellent	53.5 (46.9 - 60)	38.5 (29.7 - 47.3)	54.2 (50.4 - 58)	40.5 (34.5 - 46.5)	59.9 (58.9 - 60.9)	37.9 (35.9 - 40)
Activity Limitation	43.0 (37.6 - 48.5)	61.6 (50.7 - 72.5)	43.6 (40.3 - 46.9)	62.7 (56.2 - 69.1)	33.5 (32.6 - 34.4)	59.1 (57 - 61.3)
<b>Use of Preventive Care</b>						
Received Flu Shot In Past Year	48.9 (41.9 - 55.9)	61.8 (52.4 - 71.2)	46.9 (43.1 - 50.7)	70.3 (64.1 - 76.6)	35.9 (35 - 36.8)	70.1 (68.2 - 72)
Contact With Medical Doctor In Past Year	79.1 (73.9 - 84.2)	90.9 (85 - 96.7)	80.8 (78.2 - 83.4)	91.6 (88.3 - 94.9)	81.4 (80.6 - 82.2)	90.5 (89.4 - 91.7)
<b>Health Practices</b>						
Daily Smokers	21.1 (15.6 - 26.6)	12.4* (6.9 - 17.9)	22.3 (19.3 - 25.4)	11.4* (7.6 - 15.2)	16.3 (15.6 - 17)	7.7 (6.7 - 8.8)
Exposed To Second Hand Smoke In Home	12.4* (7.1 - 17.7)	--	11.7 (8.6 - 14.7)	--	6.1 (5.6 - 6.6)	4.6 (3.5 - 5.6)
Heavy Alcohol Consumption	21.3 (14.5 - 28.2)	--	22.1 (18.6 - 25.6)	7.5* (3.6 - 11.5)	21.7 (20.8 - 22.6)	7.1 (5.7 - 8.5)
Obese Or Overweight	56.5 (49.7 - 63.4)	53.2 (42.4 - 64)	53.8 (49.8 - 57.8)	54.7 (48.3 - 61)	49.6 (48.6 - 50.6)	53.4 (51.3 - 55.6)
Physically Inactive	42.7 (36.9 - 48.5)	60.9 (51.4 - 70.3)	44.5 (41 - 48.1)	53.3 (47 - 59.7)	49.0 (48 - 50.1)	54.2 (52.2 - 56.3)
Consumes Fruits / Vegetables 5+ Times A Day	43.2 (36 - 50.4)	50.5 (39.8 - 61.1)	42.8 (39.3 - 46.3)	49.0 (42.3 - 55.6)	39.7 (38.7 - 40.8)	41.6 (39.4 - 43.7)
Has A Lot Of Stress (Age 18+)	22.1 (18.1 - 26.2)	--	23.9 (21.2 - 26.7)	8.7* (4.9 - 12.5)	22.5 (21.7 - 23.3)	10.9 (9.6 - 12.2)
<b>Chronic Conditions</b>						
Arthritis / Rheumatism	28.2 (23.4 - 32.9)	51.7 (42 - 61.3)	25.6 (22.7 - 28.6)	51.9 (45.6 - 58.2)	16.4 (15.8 - 17)	47.1 (45.1 - 49.1)
Diabetes	8.0* (4.8 - 11.1)	15.3* (8.6 - 22)	7.0 (5.5 - 8.6)	19.6 (14.6 - 24.5)	6.1 (5.6 - 6.5)	16.9 (15.2 - 18.6)
Asthma	6.1* (3.7 - 8.5)	6.9* (3 - 10.9)	10.0 (7.8 - 12.3)	9.2* (5.7 - 12.7)	8.2 (7.7 - 8.8)	7.3 (6.3 - 8.3)
High Blood Pressure	19.4 (14.7 - 24.1)	47.9 (35.4 - 60.3)	19.8 (17.3 - 22.3)	49.0 (42 - 56)	16.4 (15.8 - 17.1)	47.2 (45.1 - 49.3)

Source: Canadian Community Health Survey (CCHS), 2007

Numbers in brackets represent the 95% confidence intervals (CI) around the estimates.

<sup>1</sup>CCHS estimates are not available for sub-LHIN planning areas. Estimates for the Hastings and Prince Edward Counties Health Unit are used for this profile.

-- Because of high sampling variability this estimate is not available

\* Value is significantly different than the provincial estimate

Estimates are for the population aged 12 or older, unless otherwise indicated.



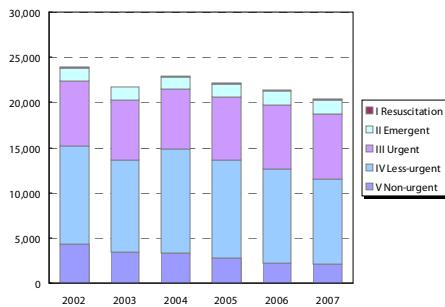
Ontario  
Local Health Integration  
Network

southeasthin.on.ca

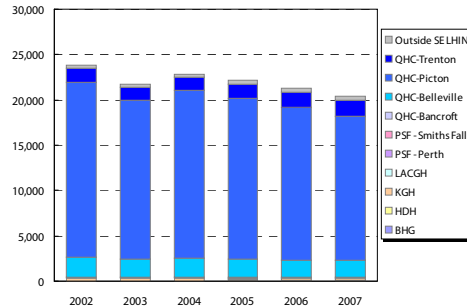
# Sub-LHIN Planning Area Profile (cont'd): Prince Edward County

## Emergency Department Utilization

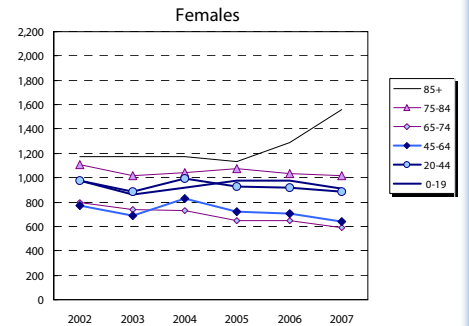
ED Visits by Area Residents by CTAS Level



ED Visits by Institution



Rate (/1,000) of ED Visits by Age Group



Community Support Services (selected)

Head Office Location of Provider	Caregiver Support all Services (hours)		Meals on Wheels (meals)		Transportation (1-way trips)	
	2006	2012	2006	2012	2006	2012
Addington N/C Frontenac	1,160	2,015	5,110	2,968	3,130	2,858
Belleville	7,077	12,827	18,800	20,990	5,858	5,715
Brockville	2,590	2,970	14,000	23,111	4,500	8,015
Central Hastings	588	-	4,100	4,867	2,800	3,289
Kingston	5,109	-	125,063	900	900	-
North Hastings	2,600	4,695	4,500	7,573	6,500	9,419
Prince Edward County	3,822	7,503	15,000	27,597	1,525	2,346
Quinte West	26,109	58,984	49,675	128,120	9,380	19,223
Smiths Falls, Perth, Lanark	10,744	8,150	50,860	68,389	30,559	46,063
Tyendinaga Napanee	2,780	1,101	9,500	10,148	13,000	16,205
South East LHIN	62,579	95,927	171,545	285,078	78,152	110,430

Community Care Access Centre (CCAC)

Services	2007/08	2012/13	Change 07-12	
	Actual	Projected	#	%
Admissions	8,251	11,396	3,145	38.1%
In-Home Acute	44,307	43,457	( 850)	(1.9%)
In-Home Maintenance	216,305	228,140	11,835	5.5%
In-Home Rehab	31,389	29,826	(1,563)	(5.0%)
In-Home End-of-Life	14,559	14,177	( 382)	(2.6%)
In-Home LTC	64,034	67,614	3,580	5.6%
Residential	1,406	1,394	( 12)	(0.8%)
<b>Total</b>	<b>372,000</b>	<b>384,608</b>	<b>12,608</b>	<b>3.4%</b>

\*Community Health Centre (CHC) Actual and Projected pending verification with local data management personnel

Homemaking/Personal Supp/Attendant/Respite-Phys Dis Outreach

Area of Service Provision	2006	2012
Hastings/Prince Edward	34,000	17,616
Frontenac/Leeds Grenville/Lanark	81,972	76,044
South East LHIN	115,972	93,660

Hospital-based Services

	2007/08 Actual				2012/13 Projected			
	To SE LHIN Hospitals	Outside SE LHIN	Total	% of Total	To SE LHIN Hospitals	Outside SE LHIN	Total	% of Total
<b>ER Visits</b>	19,936	423	20,359	100%	20,744	808	21,552	100%
<b>IP Events (Acute Institutions)</b>								
No. of Separations	2,689	183	2,872	100%	2,783	94	2,877	100%
Acute Days of Stay	13,579	923	14,502	100%	14,412	833	15,245	100%
ALC Separations	92	2	94	100%	156	64	220	100%
ALC Days of Stay	1,889	14	1,903	100%	3,622	1,733	5,355	100%
<b>Outpatient Events/Clinic Visits</b>								
Surgical/PARR*	3,031	228	3,259	100%	3,591	560	4,151	100%
Oncology Visits	1,412	89	1,501	100%	1,204	( 208)	996	100%
Dialysis Visits	3,241	1	3,242	100%	3,535	294	3,829	100%
Cardiac Caths	140	6	146	100%	134	( 6)	128	100%
Radiation Treatments	1,091	100	1,191	100%	1,155	64	1,219	100%
All Outpatient Events	8,915	71.3%	3,591	28.7%	12,506	703	7.9%	
<b>Rehabilitation</b>								
Cases	22	7	29	100%	25	3	28	100%
Days	943	94.9%	51	5.1%	994	91.3	( 30)	(3.1%)
<b>Complex Continuing Care</b>								
Cases	18	100.0%	-	-	18	100%	22	4 20.6%
Days	639	100.0%	-	-	639	100%	1,028	389 60.9%
<b>Adult Mental Health</b>								
Cases	63	84.0%	12	16.0%	75	100%	64	1 2.2%
Days	825	88.7%	105	11.3%	930	100%	1,097	272 33.0%

Community Mental Health and Addictions

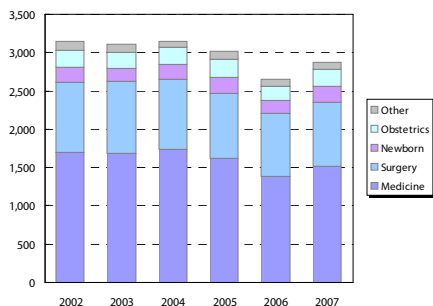
Individuals Served (2007)

Head Office Location of Provider	2007
Belleville	4,629
Brockville	5,392
Kingston & Islands	7,560
Smiths Falls, Perth, Lanark	9,091
Tyendinaga Napanee	1,758
South East LHIN	28,430

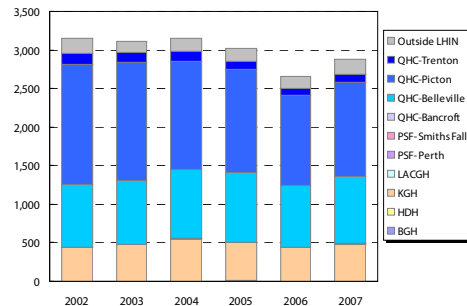
Clients with Open Admission to program...

County	Problem Gambling		Substance Abuse	
	2004	2008	2004	2008
Frontenac	39	86	1,462	2,023
Hastings	21	15	811	1,043
Lanark	7	26	290	600
Leeds-Gren.	35	50	429	806
Lenn. & Add.	12	15	489	841
Prince Ed.	<5	<5	105	151

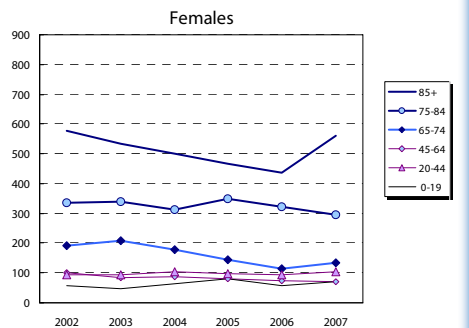
Inpatient Visits by Area Residents by Service Type



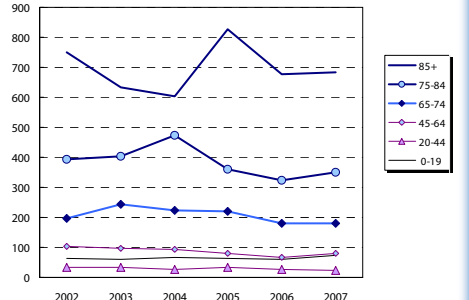
Inpatient Visits by Institution



Rate (/1,000) of Inpatient Events by Age Group



Rate (/1,000) of Inpatient Events by Age Group



## Hospital In-Patient Utilization