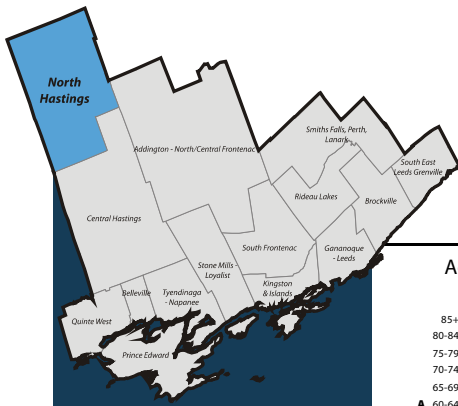


# South East Local Health Integration Network (LHIN) Sub-LHIN Planning Area Profile: North Hastings



## Quick Facts:

Size: 2,210 km<sup>2</sup>  
 Population (2006)  
 Total: 11,490  
 Aged 65+: 2,510  
 % 65+: 21.8%  
 Density: 5.2 persons/km<sup>2</sup>

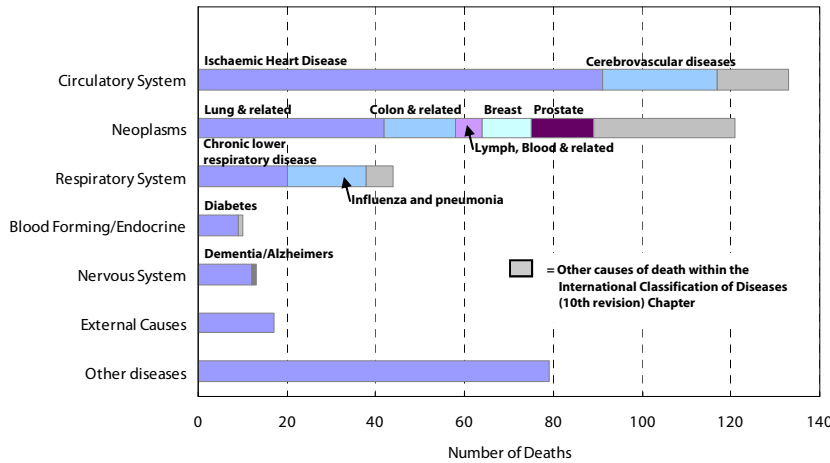
Age Distribution, 2006, 2011 and 2016 (projected)



## Demography

Year	North Hastings	South East LHIN	Ontario	Percentage of Total Population		
				North Hastings	South East LHIN	Ontario
<b>Population Counts</b>						
Total Population						
2006	12,403	482,078	12,705,344			
2009	11,980	486,101	13,050,754			
2011	11,550	492,452	13,349,125			
2016	11,493	510,626	14,149,965			
<b>Aged 65+</b>						
2006	2,509	80,630	1,649,293	20.2%	16.7%	13.0%
2009	2,581	86,097	1,770,571	21.5%	17.7%	13.6%
2011	2,592	90,168	1,864,941	22.4%	18.3%	14.0%
2016	3,104	105,224	2,214,279	27.0%	20.6%	15.6%
<b>Aged 75+</b>						
2006	1,059	37,269	781,257	8.5%	7.7%	6.1%
2009	1,057	38,990	837,672	8.8%	8.0%	6.4%
2011	1,019	40,324	871,594	8.8%	8.2%	6.5%
2016	1,071	44,307	959,871	9.3%	8.7%	6.8%
<b>Aged 85+</b>						
2006	233	9,648	192,104	1.9%	2.0%	1.5%
2009	231	10,718	228,156	1.9%	2.2%	1.7%
2011	221	11,302	249,961	1.9%	2.3%	1.9%
2016	241	12,494	294,008	2.1%	2.4%	2.1%

Leading Causes of Death in the Sub-LHIN Planning area, 2001-2004



## Census Characteristics

	North Hastings	South East LHIN	Ontario
No certificate, degree or diploma (age 25+)	29.2%	20.0%	18.7%
Completed post-secondary education (age 25+)	44.2%	53.4%	56.8%
Unemployment rate (age 15+)	6.6%	6.2%	6.4%
Labour force participation rate (age 15+)	51.6%	62.4%	67.1%
Proportion of population living in low income	11.3%	11.9%	14.7%
English Mother tongue	95.4%	91.5%	69.8%
French Mother tongue	1.0%	2.7%	4.4%
Immigrants	6.6%	9.3%	28.3%
Recent Immigrants (5 years)	0.0%	0.8%	4.8%
Visible minorities	0.5%	3.3%	22.8%
Aboriginal Identity	10.3%	2.8%	2.0%

## Health Status

	Hastings and Prince Edward Counties Health Unit <sup>1</sup>		South East LHIN		Ontario	
	Total Population	Aged 65 and Older	Total Population	Aged 65 and Older	Total Population	Aged 65 and Older
<b>Overall Health Status</b>						
Self-rated Health: Very Good or Excellent	53.5 (46.9 - 60)	38.5 (29.7 - 47.3)	54.2 (50.4 - 58)	40.5 (34.5 - 46.5)	59.9 (58.9 - 60.9)	37.9 (35.9 - 40)
Activity Limitation	43.0 (37.6 - 48.5)	61.6 (50.7 - 72.5)	43.6 (40.3 - 46.9)	62.7 (56.2 - 69.1)	33.5 (32.6 - 34.4)	59.1 (57 - 61.3)
<b>Use of Preventive Care</b>						
Received Flu Shot In Past Year	48.9 (41.9 - 55.9)	61.8 (52.4 - 71.2)	46.9 (43.1 - 50.7)	70.3 (64.1 - 76.6)	35.9 (35 - 36.8)	70.1 (68.2 - 72)
Contact With Medical Doctor In Past Year	79.1 (73.9 - 84.2)	90.9 (85 - 96.7)	80.8 (78.2 - 83.4)	91.6 (88.3 - 94.9)	81.4 (80.6 - 82.2)	90.5 (89.4 - 91.7)
<b>Health Practices</b>						
Daily Smokers	21.1 (15.6 - 26.6)	12.4* (6.9 - 17.9)	22.3 (19.3 - 25.4)	11.4* (7.6 - 15.2)	16.3 (15.6 - 17)	7.7 (6.7 - 8.8)
Exposed To Second Hand Smoke In Home	12.4* (7.1 - 17.7)	--	11.7 (8.6 - 14.7)	--	6.1 (5.6 - 6.6)	4.6 (3.5 - 5.6)
Heavy Alcohol Consumption	21.3 (14.5 - 28.2)	--	22.1 (18.6 - 25.6)	7.5* (3.6 - 11.5)	21.7 (20.8 - 22.6)	7.1 (5.7 - 8.5)
Obese Or Overweight	56.5 (49.7 - 63.4)	53.2 (42.4 - 64)	53.8 (49.8 - 57.8)	54.7 (48.3 - 61)	49.6 (48.6 - 50.6)	53.4 (51.3 - 55.6)
Physically Inactive	42.7 (36.9 - 48.5)	60.9 (51.4 - 70.3)	44.5 (41 - 48.1)	53.3 (47 - 59.7)	49.0 (48 - 50.1)	54.2 (52.2 - 56.3)
Consumes Fruits / Vegetables 5+ Times A Day	43.2 (36 - 50.4)	50.5 (39.8 - 61.1)	42.8 (39.3 - 46.3)	49.0 (42.3 - 55.6)	39.7 (38.7 - 40.8)	41.6 (39.4 - 43.7)
Has A Lot Of Stress (Age 18+)	22.1 (18.1 - 26.2)	--	23.9 (21.2 - 26.7)	8.7* (4.9 - 12.5)	22.5 (21.7 - 23.3)	10.9 (9.6 - 12.2)
<b>Chronic Conditions</b>						
Arthritis / Rheumatism	28.2 (23.4 - 32.9)	51.7 (42 - 61.3)	25.6 (22.7 - 28.6)	51.9 (45.6 - 58.2)	16.4 (15.8 - 17)	47.1 (45.1 - 49.1)
Diabetes	8.0* (4.8 - 11.1)	15.3* (8.6 - 22)	7.0 (5.5 - 8.6)	19.6 (14.6 - 24.5)	6.1 (5.6 - 6.5)	16.9 (15.2 - 18.6)
Asthma	6.1* (3.7 - 8.5)	6.9* (3 - 10.9)	10.0 (7.8 - 12.3)	9.2* (5.7 - 12.7)	8.2 (7.7 - 8.8)	7.3 (6.3 - 8.3)
High Blood Pressure	19.4 (14.7 - 24.1)	47.9 (35.4 - 60.3)	19.8 (17.3 - 22.3)	49.0 (42 - 56)	16.4 (15.8 - 17.1)	47.2 (45.1 - 49.3)

Source: Canadian Community Health Survey (CCHS), 2007

Numbers in brackets represent the 95% confidence intervals (CI) around the estimates.

<sup>1</sup>CCHS estimates are not available for sub-LHIN planning areas. Estimates for the Hastings and Prince Edward Counties Health Unit are used for this profile.

-- Because of high sampling variability this estimate is not available

\* Value is significantly different than the provincial estimate

Estimates are for the population aged 12 or older, unless otherwise indicated.

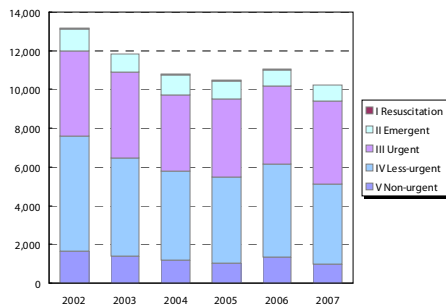


Ontario  
Local Health Integration  
Network

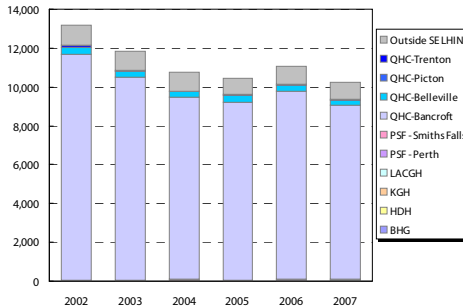
southeasthin.on.ca

**Emergency Department Utilization**

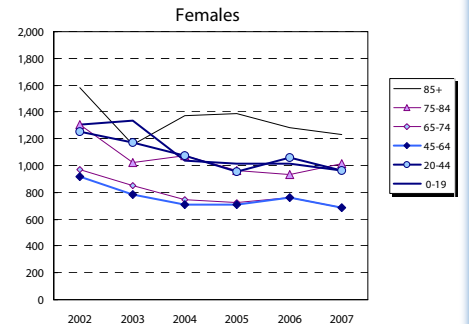
ED Visits by Area Residents by CTAS Level



ED Visits by Institution



Rate (/1,000) of ED Visits by Age Group



Community Support Services (selected)

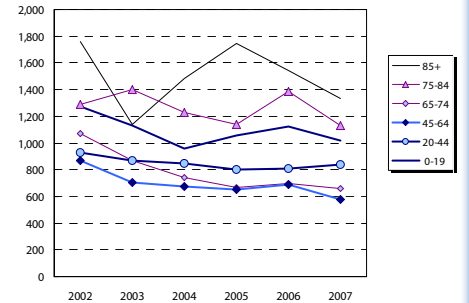
Head Office Location of Provider	Caregiver Support all Services (hours)		Meals on Wheels (meals)		Transportation (1-way trips)	
	2006	2012	2006	2012	2006	2012
Addington N/C Frontenac	1,160	2,015	5,110	2,968	3,130	2,858
Belleville	7,077	12,827	18,800	20,990	5,858	5,715
Brockville	2,590	2,970	14,000	23,111	4,500	8,015
Central Hastings	588	-	4,100	4,867	2,800	3,289
Kingston	5,109	-	125,063	900	900	-
North Hastings	2,600	4,695	4,500	7,573	6,500	9,419
Prince Edward County	3,822	7,503	15,000	27,597	1,525	2,346
Quinte West	26,109	58,984	49,675	128,120	9,380	19,223
Smiths Falls, Perth, Lanark	10,744	8,150	50,860	68,389	30,559	46,063
Tyendinaga Napanee	2,780	1,101	9,500	10,148	13,000	16,205
South East LHIN	62,579	95,927	171,545	285,078	78,152	110,430

Community Care Access Centre (CCAC)

Services	2007/08	2007/08	Change 07-12	
	Actual	Projected	#	%
Admissions	8,251	11,396	3,145	38.1%
<b>Services</b>				
In-Home Acute	44,307	43,457	( 850)	(1.9%)
In-Home Maintenance	216,305	228,140	11,835	5.5%
In-Home Rehab	31,389	29,826	(1,563)	(5.0%)
In-Home End-of-Life	14,559	14,177	( 382)	(2.6%)
In-Home LTC	64,034	67,614	3,580	5.6%
Residential	1,406	1,394	( 12)	(0.8%)
<b>Total</b>	<b>372,000</b>	<b>384,608</b>	<b>12,608</b>	<b>3.4%</b>

\*Community Health Centre (CHC) Actual and Projected pending verification with local data management personnel

Rate (/1,000) of ED Visits by Age Group



Homemaking/Personal Supp/Attendant/Respite-Phys Dis Outreach

Area of Service Provision	2006	2012
Hastings/Prince Edward	34,000	17,616
Frontenac/Leeds Grenville/Lanark	81,972	76,044
South East LHIN	115,972	93,660

Hospital-based Services

	2007/08 Actual				2007/13 Projected			
	To SE LHIN Hospitals	Outside SE LHIN	Total	% of Total	To SE LHIN Hospitals	Outside SE LHIN	Total	% of Total
<b>ER Visits</b>	9,356	884	10,240	100%	9,669	313	9,982	100%
<b>IP Events (Acute Institutions)</b>								
No. of Separations	690	457	1,147	100%	638	( 52)	586	(7.5%)
Acute Days of Stay	3,683	2,614	6,297	100%	3,466	( 217)	3,249	(5.9%)
ALC <sup>1</sup> Separations	43	13	56	100%	49	6	55	14.8%
ALC Days of Stay	1,418	129	1,547	100%	1,691	273	1,964	19.3%
<b>Outpatient Events/Clinic Visits</b>								
Surgical/PARR <sup>2</sup>	409	894	1,303	100%	1,269	860	2,129	210.2%
Oncology Visits	211	240	451	100%	441	230	671	108.8%
Dialysis Visits	830	143	973	100%	930	100	1,030	12.1%
Cardiac Caths	29	62	91	100%	80	51	131	174.6%
Radiation Treatments	264	287	551	100%	573	309	882	116.9%
All Outpatient Events	1,743	1,269	3,012	100%	3,292	1,549	4,841	88.9%
<b>Rehabilitation</b>								
Cases	10	19	29	100%	12	2	14	17.4%
Days	331	280	611	100%	508	177	685	53.6%
<b>Complex Continuing Care</b>								
Cases	8	2	10	100%	10	2	12	27.2%
Days	339	90.4%	375	100%	390	51	441	15.0%
<b>Adult Mental Health</b>								
Cases	45	6	51	100%	31	( 14)	17	(31.8%)
Days	473	146	619	100%	418	( 55)	363	(11.7%)

Community Mental Health and Addictions

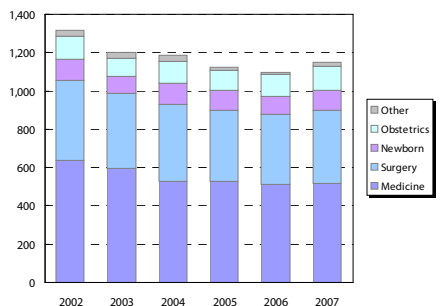
**Individuals Served (2007)**

Head Office Location of Provider	2007
Belleville	4,629
Brockville	5,392
Kingston & Islands	7,560
Smiths Falls, Perth, Lanark	9,091
Tyendinaga Napanee	1,758
South East LHIN	28,430

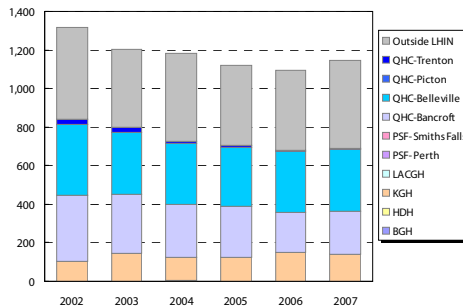
**Clients with Open Admission to program...**

County	Problem Gambling		Substance Abuse	
	2004	2008	2004	2008
Frontenac	39	86	1,462	2,023
Hastings	21	15	811	1,043
Lanark	7	26	290	600
Leeds-Gren.	35	50	429	806
Lenn. & Add.	12	15	489	841
Prince Ed.	<5	<5	105	151

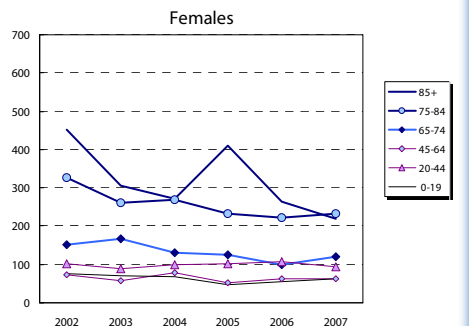
Inpatient Visits by Area Residents by Service Type



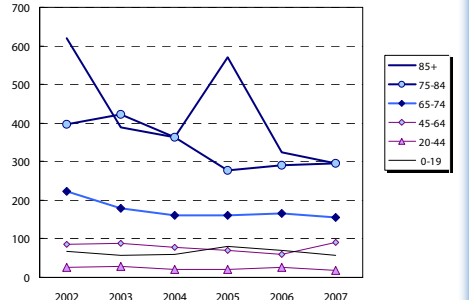
Inpatient Visits by Institution



Rate (/1,000) of Inpatient Events by Age Group



Rate (/1,000) of Inpatient Events by Age Group



**Hospital In-Patient Utilization**