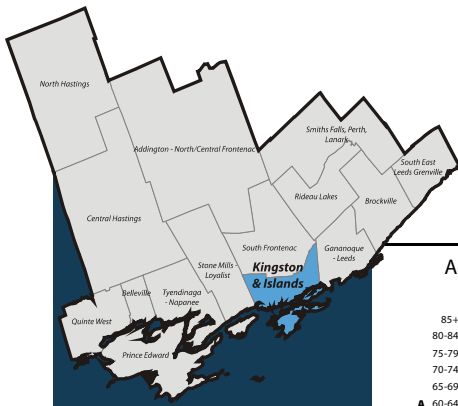


# South East Local Health Integration Network (LHIN) Sub-LHIN Planning Area Profile: Kingston & Islands



## Quick Facts:

Size: 630 km<sup>2</sup>  
 Population (2006)  
 Total: 119,070  
 Aged 65+: 18,730  
 % 65+: 15.7%  
 Density: 190.4 persons/km<sup>2</sup>

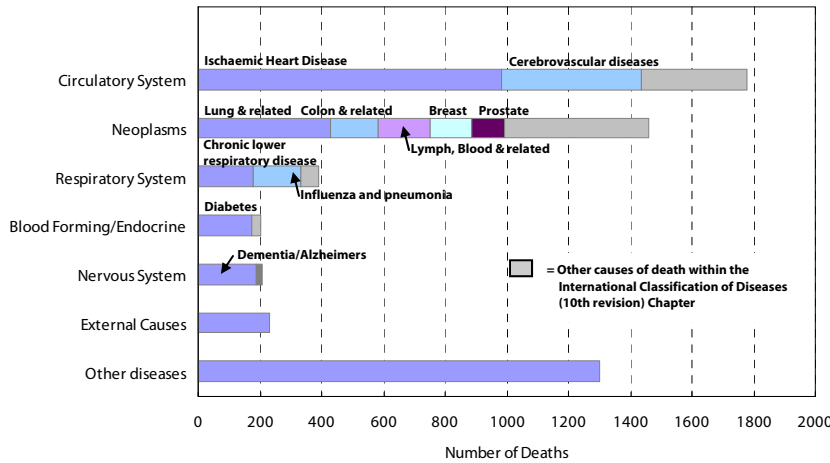
Age Distribution, 2006, 2011 and 2016 (projected)



## Demography

Year	Kingston and Islands	South East LHIN	Ontario	Kingston and Islands			South East LHIN			Ontario		
				Population Counts	Percentage of Total Population		Population Counts	Percentage of Total Population		Population Counts	Percentage of Total Population	
<b>Total Population</b>												
2006	122,082	482,078	12,705,344									
2009	123,051	486,101	13,050,754									
2011	125,341	492,452	13,349,125									
2016	129,467	510,626	14,149,965									
<b>Aged 65+</b>												
2006	18,728	80,630	1,649,293	15.3%	16.7%	13.0%						
2009	19,899	86,097	1,770,571	16.2%	17.7%	13.6%						
2011	20,865	90,168	1,864,941	16.6%	18.3%	14.0%						
2016	24,641	105,224	2,214,279	19.0%	20.6%	15.6%						
<b>Aged 75+</b>												
2006	9,558	37,269	781,257	7.8%	7.7%	6.1%						
2009	9,918	38,990	837,672	8.1%	8.0%	6.4%						
2011	10,070	40,324	871,594	8.0%	8.2%	6.5%						
2016	10,773	44,307	959,871	8.3%	8.7%	6.8%						
<b>Aged 85+</b>												
2006	2,674	9,648	192,104	2.2%	2.0%	1.5%						
2009	2,837	10,718	228,156	2.3%	2.2%	1.7%						
2011	2,782	11,302	249,961	2.2%	2.3%	1.9%						
2016	3,129	12,494	294,008	2.4%	2.4%	2.1%						

Leading Causes of Death in the Sub-LHIN Planning area, 2001-2004



## Census Characteristics

	Kingston and Islands	South East LHIN	Ontario
No certificate, degree or diploma (age 25+)	14.9%	20.0%	18.7%
Completed post-secondary education (age 25+)	61.5%	53.4%	56.8%
Unemployment rate (age 15+)	7.0%	6.2%	6.4%
Labour force participation rate (age 15+)	64.1%	62.4%	67.1%
Proportion of population living in low income	15.2%	11.9%	14.7%
English Mother tongue	86.2%	91.5%	69.8%
French Mother tongue	3.5%	2.7%	4.4%
Immigrants	14.1%	9.3%	28.3%
Recent Immigrants (5 years)	1.8%	0.8%	4.8%
Visible minorities	7.1%	3.3%	22.8%
Aboriginal Identity	2.1%	2.8%	2.0%

## Health Status

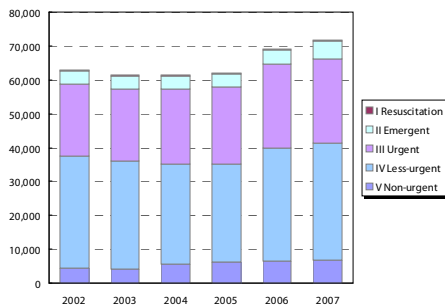
	Kingston, Frontenac and Lennox & Addington Public Health <sup>1</sup>				South East LHIN				Ontario			
	Total Population		Aged 65 and Older		Total Population		Aged 65 and Older		Total Population		Aged 65 and Older	
<b>Overall Health Status</b>												
Self-rated Health: Very Good or Excellent	57.1	(51.5 - 62.6)	46.4	(35.9 - 57)	54.2	(50.4 - 58)	40.5	(34.5 - 46.5)	59.9	(58.9 - 60.9)	37.9	(35.9 - 40)
Activity Limitation	41.3	(36.2 - 46.3)	59.1	(48.6 - 69.6)	43.6	(40.3 - 46.9)	62.7	(56.2 - 69.1)	33.5	(32.6 - 34.4)	59.1	(57 - 61.3)
<b>Use of Preventive Care</b>												
Received Flu Shot In Past Year	46.0	(40.9 - 51.1)	81.4	(73.7 - 89.1)	46.9	(43.1 - 50.7)	70.3	(64.1 - 76.6)	35.9	(35 - 36.8)	70.1	(68.2 - 72)
Contact With Medical Doctor In Past Year	83.6	(79.7 - 87.5)	93.1	(88.4 - 97.9)	80.8	(78.2 - 83.4)	91.6	(88.3 - 94.9)	81.4	(80.6 - 82.2)	90.5	(89.4 - 91.7)
<b>Health Practices</b>												
Daily Smokers	22.8	(17.8 - 27.8)	--		22.3	(19.3 - 25.4)	11.4*	(7.6 - 15.2)	16.3	(15.6 - 17)	7.7	(6.7 - 8.8)
Exposed To Second Hand Smoke In Home	10.4	(5.1 - 15.7)	--		11.7	(8.6 - 14.7)	--		6.1	(5.6 - 6.6)	4.6	(3.5 - 5.6)
Heavy Alcohol Consumption	21.0	(16.2 - 25.8)	--		22.1	(18.6 - 25.6)	7.5*	(3.6 - 11.5)	21.7	(20.8 - 22.6)	7.1	(5.7 - 8.5)
Obese Or Overweight	52.5	(46.2 - 58.9)	51.6	(41.5 - 61.7)	53.8	(49.8 - 57.8)	54.7	(48.3 - 61)	49.6	(48.6 - 50.6)	53.4	(51.3 - 55.6)
Physically Inactive	45.3	(39.8 - 50.9)	49.6	(39.5 - 59.7)	44.5	(41 - 48.1)	53.3	(47 - 59.7)	49.0	(48 - 50.1)	54.2	(52.2 - 56.3)
Consumes Fruits / Vegetables 5+ Times A Day	42.3	(37.2 - 47.4)	51.6	(39.4 - 63.9)	42.8	(39.3 - 46.3)	49.0	(42.3 - 55.6)	39.7	(38.7 - 40.8)	41.6	(39.4 - 43.7)
Has A Lot Of Stress (Age 18+)	23.4	(19 - 27.9)	--		23.9	(21.2 - 26.7)	8.7*	(4.9 - 12.5)	22.5	(21.7 - 23.3)	10.9	(9.6 - 12.2)
<b>Chronic Conditions</b>												
Arthritis / Rheumatism	22.2	(17.5 - 26.9)	54.4	(42.9 - 65.9)	25.6	(22.7 - 28.6)	51.9	(45.6 - 58.2)	16.4	(15.8 - 17)	47.1	(45.1 - 49.1)
Diabetes	6.2*	(4 - 8.4)	22.2*	(14 - 30.5)	7.0	(5.5 - 8.6)	19.6	(14.6 - 24.5)	6.1	(5.6 - 6.5)	16.9	(15.2 - 18.6)
Asthma	11.1*	(7.3 - 15)	11.0*	(4.3 - 17.6)	10.0	(7.8 - 12.3)	9.2*	(5.7 - 12.7)	8.2	(7.7 - 8.8)	7.3	(6.3 - 8.3)
High Blood Pressure	20.0	(15.9 - 24.2)	53.4	(43.2 - 63.5)	19.8	(17.3 - 22.3)	49.0	(42 - 56)	16.4	(15.8 - 17.1)	47.2	(45.1 - 49.3)

Source: Canadian Community Health Survey (CCHS), 2007  
 Numbers in brackets represent the 95% confidence intervals (CI) around the estimates.  
 \*CCHS estimates are not available for sub-LHIN planning areas. Estimates for Kingston, Frontenac and Lennox & Addington Public Health are used for this profile.  
 -- Because of high sampling variability this estimate is not available  
 \* Value is significantly different than the provincial estimate  
 Estimates are for the population aged 12 or older, unless otherwise indicated.

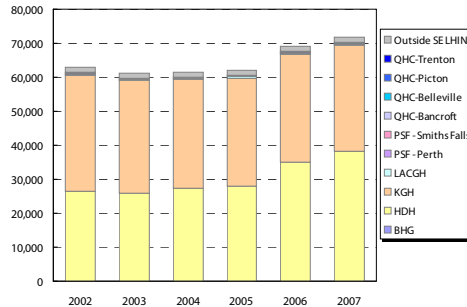
# Sub-LHIN Planning Area Profile (cont'd): Kingston & Islands

## Emergency Department Utilization

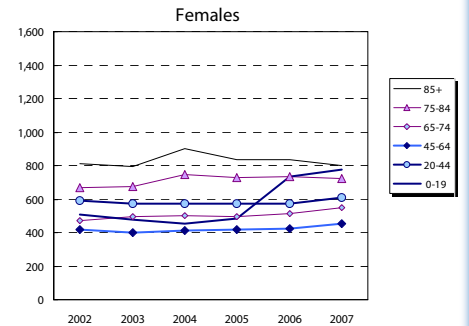
ED Visits by Area Residents by CTAS Level



ED Visits by Institution



Rate (/1,000) of ED Visits by Age Group



Community Support Services (selected)

Head Office Location of Provider	Caregiver Support all Services (hours)		Meals on Wheels (meals)		Transportation (1-way trips)	
	2006	2012	2006	2012	2006	2012
Addington N/C Frontenac	1,160	2,015	5,110	2,968	3,130	2,858
Belleville	7,077	12,827	18,800	20,990	5,858	5,715
Brockville	2,590	2,970	14,000	23,111	4,500	8,015
Central Hastings	588	-	4,100	4,867	2,800	3,289
Kingston	5,109	-	125,063	900	900	-
North Hastings	2,600	4,695	4,500	7,573	6,500	9,419
Prince Edward County	3,822	7,503	15,000	27,597	1,525	2,346
Quinte West	26,109	58,984	49,675	128,120	9,380	19,223
Smiths Falls, Perth, Lanark	10,744	8,150	50,860	68,389	30,559	46,063
Tyendinaga Napanee	2,780	1,101	9,500	10,148	13,000	16,205
South East LHIN	62,579	95,927	171,545	285,078	78,152	110,430

Community Care Access Centre (CCAC)

Services	2007/08	2012/13	Change 07-12	
	Actual	Projected	#	%
Admissions	8,251	11,396	3,145	38.1%
In-Home Acute	44,307	43,457	( 850)	(1.9%)
In-Home Maintenance	216,305	228,140	11,835	5.5%
In-Home Rehab	31,389	29,826	(1,563)	(5.0%)
In-Home End-of-Life	14,559	14,177	( 382)	(2.6%)
In-Home LTC	64,034	67,614	3,580	5.6%
Residential	1,406	1,394	( 12)	(0.8%)
<b>Total</b>	<b>372,000</b>	<b>384,608</b>	<b>12,608</b>	<b>3.4%</b>

\*Community Health Centre (CHC) Actual and Projected pending verification with local data management personnel

Homemaking/Personal Supp/Attendant/Respite-Phys Dis Outreach

Area of Service Provision	2006	2012
Hastings/Prince Edward	34,000	17,616
Frontenac/Leeds Grenville/Lanark	81,972	76,044
South East LHIN	115,972	93,660

Hospital-based Services

	2007/08 Actual				2012/13 Projected			
	To SE LHIN Hospitals	Outside SE LHIN	Total	% of Total	To SE LHIN Hospitals	Outside SE LHIN	Total	% of Total
<b>ER Visits</b>	70,360	1,433	71,793	100%	72,607	2,247	74,854	100%
<b>IP Events (Acute Institutions)</b>								
No. of Separations	9,148	349	9,497	100%	9,639	491	10,130	100%
Acute Days of Stay	56,793	2,107	58,900	100%	62,351	5,558	67,909	100%
ALC Separations	422	4	426	100%	404	( 18)	386	90%
ALC Days of Stay	12,864	39	12,903	100%	10,831	(2,033)	8,798	68%
<b>Outpatient Events/Clinic Visits</b>								
Surgical/PARR*	11,677	326	12,003	100%	12,817	1,140	13,957	100%
Oncology Visits	3,638	25	3,663	100%	3,678	40	3,718	100%
Dialysis Visits	15,810	46	15,856	100%	16,939	1,129	18,068	100%
Cardiac Caths	444	16	460	100%	466	22	488	100%
Radiation Treatments	5,715	47	5,762	100%	6,144	429	6,573	100%
All Outpatient Events	37,284	12,817	50,101	100%	40,045	2,761	42,806	100%
<b>Rehabilitation</b>								
Cases	183	8	191	100%	257	74	331	100%
Days	5,167	20	5,187	100%	6,640	1,473	8,113	100%
<b>Complex Continuing Care</b>								
Cases	198	4	202	100%	228	30	258	100%
Days	6,904	211	7,115	100%	9,622	2,718	12,340	100%
<b>Adult Mental Health</b>								
Cases	741	43	784	100%	776	35	811	100%
Days	13,932	1,191	15,123	100%	22,898	8,966	31,864	100%

Community Mental Health and Addictions

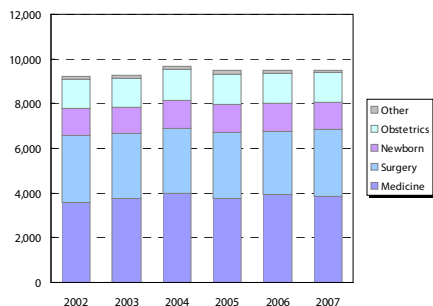
Individuals Served (2007)

Head Office Location of Provider	2007
Belleville	4,629
Brockville	5,392
Kingston & Islands	7,560
Smiths Falls, Perth, Lanark	9,091
Tyendinaga Napanee	1,758
South East LHIN	28,430

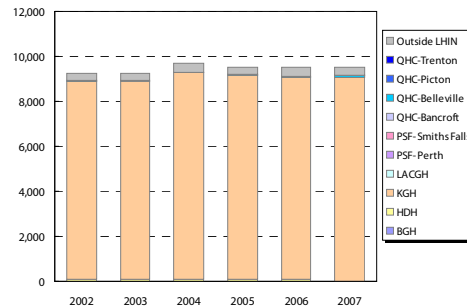
Clients with Open Admission to program...

County	Problem Gambling		Substance Abuse	
	2004	2008	2004	2008
Frontenac	39	86	1,462	2,023
Hastings	21	15	811	1,043
Lanark	7	26	290	600
Leeds-Gren.	35	50	429	806
Lenn. & Add.	12	15	489	841
Prince Ed.	<5	<5	105	151

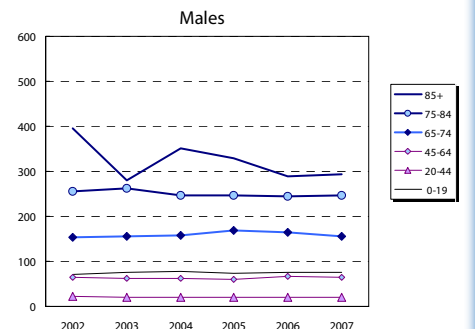
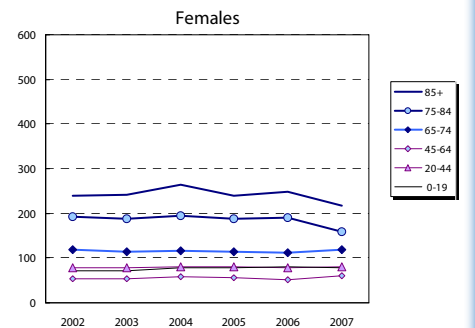
Inpatient Visits by Area Residents by Service Type



Inpatient Visits by Institution



Rate (/1,000) of Inpatient Events by Age Group



## Hospital In-Patient Utilization