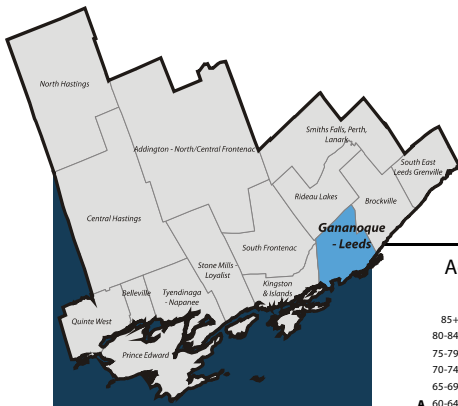


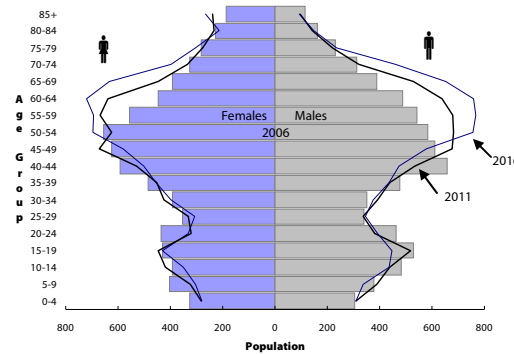
South East Local Health Integration Network (LHIN) Sub-LHIN Planning Area Profile: Gananoque Leeds



Quick Facts:

Size: 610 km²
 Population (2006)
 Total: 14,720
 Aged 65+: 2,620
 % 65+: 17.8%
 Density: 24.0 persons/km²

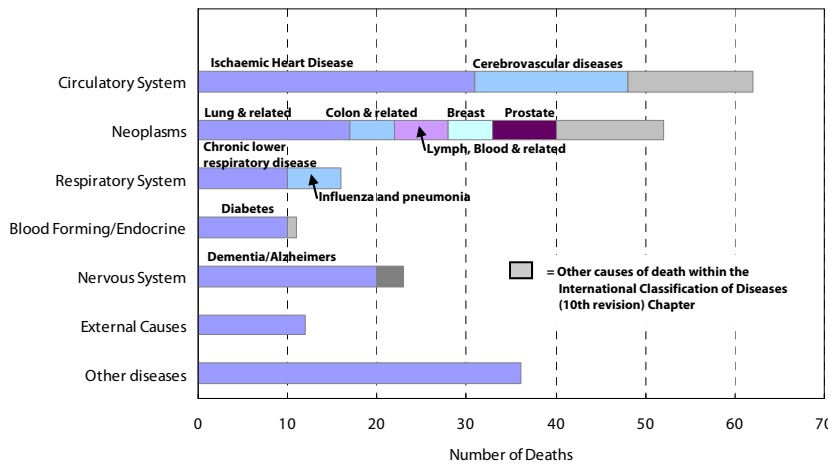
Age Distribution, 2006, 2011 and 2016 (projected)



Demography

Year	Gananoque Leeds	South East LHIN	Ontario	Percentage of Total Population		
				Gananoque Leeds	South East LHIN	Ontario
Population Counts						
Total Population						
2006	14,917	482,078	12,705,344			
2009	15,104	486,101	13,050,754			
2011	15,384	492,452	13,349,125			
2016	15,864	510,626	14,149,965			
Aged 65+						
2006	2,623	80,630	1,649,293	17.6%	16.7%	13.0%
2009	2,741	86,097	1,770,571	18.1%	17.7%	13.6%
2011	2,840	90,168	1,864,941	18.5%	18.3%	14.0%
2016	3,403	105,224	2,214,279	21.4%	20.6%	15.6%
Aged 75+						
2006	1,203	37,269	781,257	8.1%	7.7%	6.1%
2009	1,207	38,990	837,672	8.0%	8.0%	6.4%
2011	1,207	40,324	871,594	7.8%	8.2%	6.5%
2016	1,262	44,307	959,871	8.0%	8.7%	6.8%
Aged 85+						
2006	301	9,648	192,104	2.0%	2.0%	1.5%
2009	328	10,718	228,156	2.2%	2.2%	1.7%
2011	335	11,302	249,961	2.2%	2.3%	1.9%
2016	360	12,494	294,008	2.3%	2.4%	2.1%

Leading Causes of Death in the Sub-LHIN Planning area, 2001-2004



Census Characteristics

	Gananoque Leeds	South East LHIN	Ontario
No certificate, degree or diploma (age 25+)	19.5%	20.0%	18.7%
Completed post-secondary education (age 25+)	51.3%	53.4%	56.8%
Unemployment rate (age 15+)	6.0%	6.2%	6.4%
Labour force participation rate (age 15+)	65.4%	62.4%	67.1%
Proportion of population living in low income	8.8%	11.9%	14.7%
English Mother tongue	94.4%	91.5%	69.8%
French Mother tongue	1.6%	2.7%	4.4%
Immigrants	7.2%	9.3%	28.3%
Recent Immigrants (5 years)	0.5%	0.8%	4.8%
Visible minorities	1.6%	3.3%	22.8%
Aboriginal Identity	1.6%	2.8%	2.0%

Health Status

	Leeds, Grenville & Lanark District Health Unit ¹				South East LHIN				Ontario				
	Total Population		Aged 65 and Older		Total Population		Aged 65 and Older		Total Population		Aged 65 and Older		
Overall Health Status													
Self-rated Health: Very Good or Excellent	54.8	(49.2 - 60.3)	38.2	(26.6 - 49.7)	54.2	(50.4 - 58)	40.5	(34.5 - 46.5)	59.9	(58.9 - 60.9)	37.9	(35.9 - 40)	
Activity Limitation	47.2	(41.7 - 52.7)	67.2	(57.6 - 76.8)	43.6	(40.3 - 46.9)	62.7	(56.2 - 69.1)	33.5	(32.6 - 34.4)	59.1	(57 - 61.3)	
Use of Preventive Care													
Received Flu Shot In Past Year	44.6	(38.8 - 50.3)	70.9	(58.9 - 82.9)	46.9	(43.1 - 50.7)	70.3	(64.1 - 76.6)	35.9	(35 - 36.8)	70.1	(68.2 - 72)	
Contact With Medical Doctor In Past Year	79.1	(74.8 - 83.3)	89.5	(82.3 - 96.7)	80.8	(78.2 - 83.4)	91.6	(88.3 - 94.9)	81.4	(80.6 - 82.2)	90.5	(89.4 - 91.7)	
Health Practices													
Daily Smokers	21.6	(17.2 - 26)	--		22.3	(19.3 - 25.4)	11.4 [*]	(7.6 - 15.2)	16.3	(15.6 - 17)	7.7	(6.7 - 8.8)	
Exposed To Second Hand Smoke In Home	12.4 [*]	(7.5 - 17.3)	--		11.7	(8.6 - 14.7)	--		6.1	(5.6 - 6.6)	4.6	(3.5 - 5.6)	
Heavy Alcohol Consumption	23.0	(17 - 28.9)	--		22.1	(18.6 - 25.6)	7.5 [*]	(3.6 - 11.5)	21.7	(20.8 - 22.6)	7.1	(5.7 - 8.5)	
Obese Or Overweight	52.1	(46.6 - 57.6)	61.7	(49.8 - 73.6)	53.8	(49.8 - 57.8)	54.7	(48.3 - 61)	49.6	(48.6 - 50.6)	53.4	(51.3 - 55.6)	
Physically Inactive	41.9	(36.4 - 47.5)	45.1	(35.3 - 54.9)	44.5	(41 - 48.1)	53.3	(47 - 59.7)	49.0	(48 - 50.1)	54.2	(52.2 - 56.3)	
Consumes Fruits / Vegetables 5+ Times A Day	38.5	(33.3 - 43.7)	44.2	(33.8 - 54.6)	42.8	(39.3 - 46.3)	49.0	(42.3 - 55.6)	39.7	(38.7 - 40.8)	41.6	(39.4 - 43.7)	
Has A Lot Of Stress (Age 18+)	24.8	(19.7 - 29.9)	16.1 [*]	(6.6 - 25.6)	23.9	(21.2 - 26.7)	8.7 [*]	(4.9 - 12.5)	22.5	(21.7 - 23.3)	10.9	(9.6 - 12.2)	
Chronic Conditions													
Arthritis / Rheumatism	25.2	(20.8 - 29.7)	48.7	(37.1 - 60.3)	25.6	(22.7 - 28.6)	51.9	(45.6 - 58.2)	16.4	(15.8 - 17)	47.1	(45.1 - 49.1)	
Diabetes	7.1	(4.8 - 9.3)	20.9 [*]	(11.5 - 30.3)	7.0	(5.5 - 8.6)	19.6	(14.6 - 24.5)	6.1	(5.6 - 6.5)	16.9	(15.2 - 18.6)	
Asthma	11.9 [*]	(7.7 - 16)	--		10.0	(7.8 - 12.3)	9.2 [*]	(5.7 - 12.7)	8.2	(7.7 - 8.8)	7.3	(6.3 - 8.3)	
High Blood Pressure	18.2	(14.6 - 21.7)	45.0	(35 - 55.1)	19.8	(17.3 - 22.3)	49.0	(42 - 56)	16.4	(15.8 - 17.1)	47.2	(45.1 - 49.3)	

Source: Canadian Community Health Survey (CCHS), 2007

Numbers in brackets represent the 95% confidence intervals (CI) around the estimates.

¹CCHS estimates are not available for sub-LHIN planning areas. Estimates for the Leeds, Grenville and Lanark District Health Unit are used for this profile.

-- Because of high sampling variability this estimate is not available

* Value is significantly different than the provincial estimate

Estimates are for the population aged 12 or older, unless otherwise indicated.

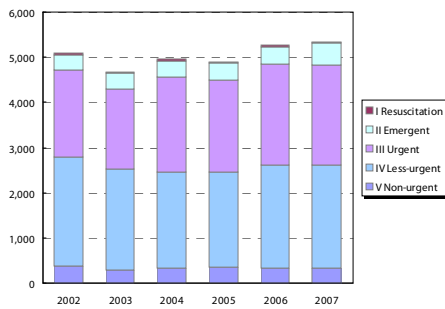


Ontario
Local Health Integration
Network

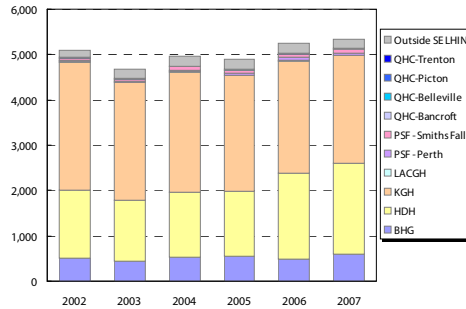
southeasthin.on.ca

Emergency Department Utilization

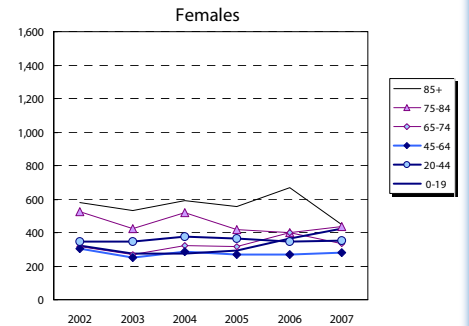
ED Visits by Area Residents by CTAS Level



ED Visits by Institution



Rate (/1,000) of ED Visits by Age Group



Community Support Services (selected)

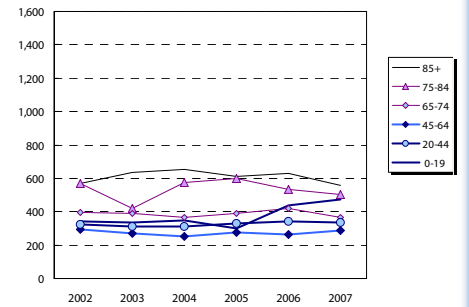
Head Office Location of Provider	Caregiver Support all Services (hours)		Meals on Wheels (meals)		Transportation (1-way trips)	
	2006	2012	2006	2012	2006	2012
Addington N/C Frontenac	1,160	2,015	5,110	2,968	3,130	2,858
Belleville	7,077	12,827	18,800	20,990	5,858	5,715
Brockville	2,590	2,970	14,000	23,111	4,500	8,015
Central Hastings	588	-	4,100	4,867	2,800	3,289
Kingston	5,109	-	125,063	900	900	900
North Hastings	2,600	4,695	4,500	7,573	6,500	9,419
Prince Edward County	3,822	7,503	15,000	27,597	1,525	2,346
Quinte West	26,109	58,984	49,675	128,120	9,380	19,223
Smiths Falls, Perth, Lanark	10,744	8,150	50,860	68,389	30,559	46,063
Tyendinaga Napanee	2,780	1,101	9,500	10,148	13,000	16,205
South East LHIN	62,579	95,927	171,545	285,078	78,152	110,430

Community Care Access Centre (CCAC)

	2007/08	2012/13	Change 07-12	
	Actual	Projected	#	%
Admissions	8,251	11,396	3,145	38.1%
Services				
In-Home Acute	44,307	43,457	(850)	(1.9%)
In-Home Maintenance	216,305	228,140	11,835	5.5%
In-Home Rehab	31,389	29,826	(1,563)	(5.0%)
In-Home End-of-Life	14,559	14,177	(382)	(2.6%)
In-Home LTC	64,034	67,614	3,580	5.6%
Residential	1,406	1,394	(12)	(0.8%)
Total	372,000	384,608	12,608	3.4%

*Community Health Centre (CHC) Actual and Projected pending verification with local data management personnel

Rate (/1,000) of Inpatient Events by Age Group



Homemaking/Personal Supp/Attendant/Respite-Phys Dis Outreach

Area of Service Provision	2006	2012
Hastings/Prince Edward	34,000	17,616
Frontenac/Leeds Grenville/Lanark	81,972	76,044
South East LHIN	115,972	93,660

Hospital-based Services

	2007/08 Actual				2012/13 Projected				
	To SELHIN Hospitals	Outside SELHIN	Total	% of Total	To SELHIN Hospitals	Outside SELHIN	Total	% of Total	
ER Visits	5,140	96.3%	200	3.7%	5,340	100%	5,455	315	6.1%
IP Events (Acute Institutions)									
No. of Separations	1,050	94.1%	66	5.9%	1,116	100%	1,099	49	4.6%
Acute Days of Stay	6,300	92.6%	504	7.4%	6,804	100%	7,169	869	13.8%
ALC ¹ Separations	29	93.5%	2	6.5%	31	100%	46	17	58.5%
ALC Days of Stay	970	97.8%	22	2.2%	992	100%	1,275	305	31.4%
Outpatient Events/Clinic Visits									
Surgical/PARR ²	1,859	96.2%	74	3.8%	1,933	100%	2,049	190	10.2%
Oncology Visits	369	99.2%	3	0.8%	372	100%	450	81	22.0%
Dialysis Visits	1,454	100.0%	-	-	1,454	100%	1,316	(138)	(9.5%)
Cardiac Caths	72	86.7%	11	13.3%	83	100%	83	11	15.9%
Radiation Treatments	557	99.8%	1	0.2%	558	100%	724	167	29.9%
All Outpatient Events	4,311	67.8%	2,049	32.2%	6,360	100%	4,623	312	7.2%
Rehabilitation									
Cases	17	89.5%	2	10.5%	19	100%	28	11	63.3%
Days	423	93.8%	28	6.2%	451	100%	908	485	114.8%
Complex Continuing Care									
Cases	27	100.0%	-	-	27	100%	30	3	10.5%
Days	660	100.0%	-	-	660	100%	1,070	410	62.2%
Adult Mental Health									
Cases	38	90.5%	4	9.5%	42	100%	34	(4)	(11.4%)
Days	685	98.1%	13	1.9%	698	100%	517	(168)	(24.6%)

Community Mental Health and Addictions

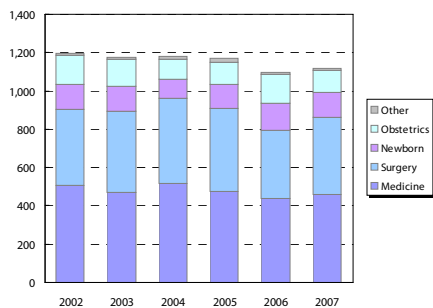
Individuals Served (2007)

Head Office Location of Provider	2007
Belleville	4,629
Brockville	5,392
Kingston & Islands	7,560
Smiths Falls, Perth, Lanark	9,091
Tyendinaga Napanee	1,758
South East LHIN	28,430

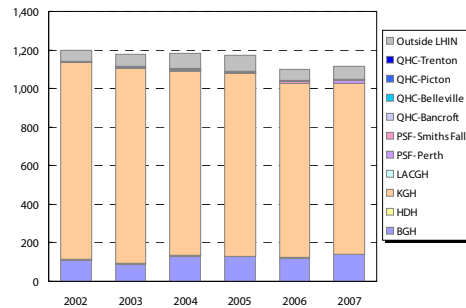
Clients with Open Admission to program...

County	Problem Gambling		Substance Abuse	
	2004	2008	2004	2008
Frontenac	39	86	1,462	2,023
Hastings	21	15	811	1,043
Lanark	7	26	290	600
Leeds-Gren.	35	50	429	806
Lenn. & Add.	12	15	489	841
Prince Ed.	<5	<5	105	151

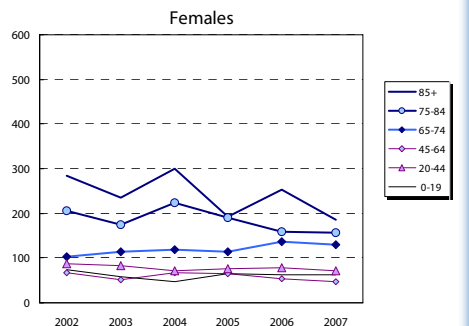
Inpatient Visits by Area Residents by Service Type



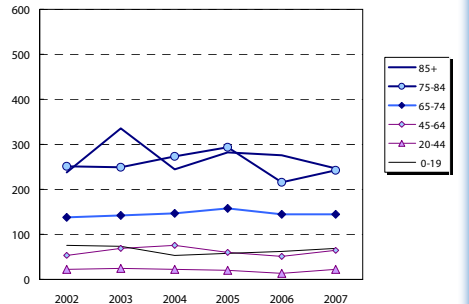
Inpatient Visits by Institution



Rate (/1,000) of Inpatient Events by Age Group



Rate (/1,000) of Inpatient Events by Age Group



Hospital In-Patient Utilization