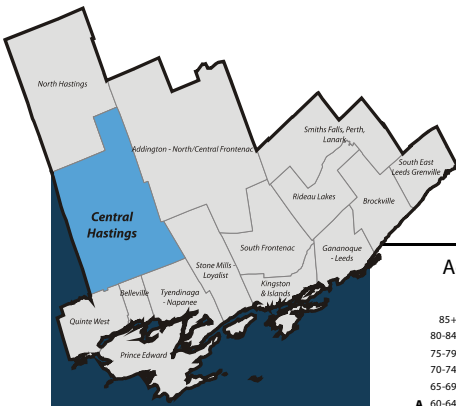


South East Local Health Integration Network (LHIN) Sub-LHIN Planning Area Profile: Central Hastings



Quick Facts:

Size: 2,640 km²
 Population (2006)
 Total: 21,570
 Aged 65+: 3,960
 % 65+: 18.4%
 Density: 8.2 persons/km²

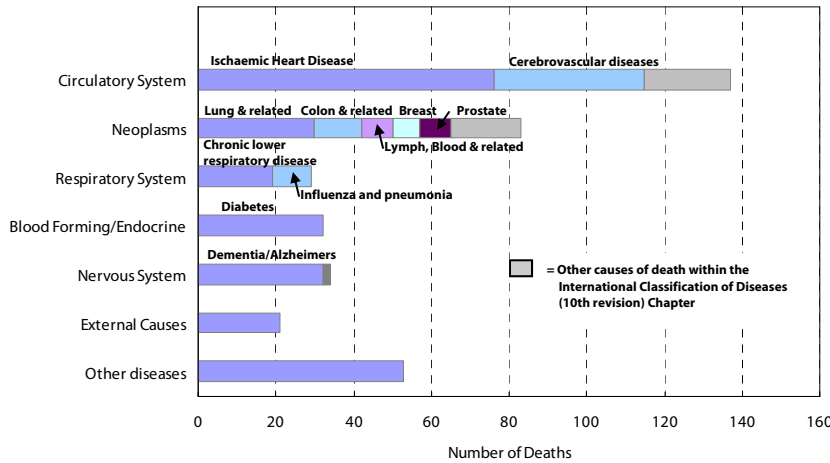
Age Distribution, 2006, 2011 and 2016 (projected)



Demography

| Year | Central Hastings | South East LHIN | Ontario | Percentage of Total Population | | |
|--------------------------|------------------|-----------------|------------|--------------------------------|-----------------|---------|
| | | | | Central Hastings | South East LHIN | Ontario |
| Population Counts | | | | | | |
| Total Population | | | | | | |
| 2006 | 23,127 | 482,078 | 12,705,344 | | | |
| 2009 | 22,571 | 486,101 | 13,050,754 | | | |
| 2011 | 21,987 | 492,452 | 13,349,125 | | | |
| 2016 | 22,127 | 510,626 | 14,149,965 | | | |
| Aged 65+ | | | | | | |
| 2006 | 3,964 | 80,630 | 1,649,293 | 17.1% | 16.7% | 13.0% |
| 2009 | 4,103 | 86,097 | 1,770,571 | 18.2% | 17.7% | 13.6% |
| 2011 | 4,153 | 90,168 | 1,864,941 | 18.9% | 18.3% | 14.0% |
| 2016 | 5,144 | 105,224 | 2,214,279 | 23.2% | 20.6% | 15.6% |
| Aged 75+ | | | | | | |
| 2006 | 1,660 | 37,269 | 781,257 | 7.2% | 7.7% | 6.1% |
| 2009 | 1,678 | 38,990 | 837,672 | 7.4% | 8.0% | 6.4% |
| 2011 | 1,706 | 40,324 | 871,594 | 7.8% | 8.2% | 6.5% |
| 2016 | 1,839 | 44,307 | 959,871 | 8.3% | 8.7% | 6.8% |
| Aged 85+ | | | | | | |
| 2006 | 455 | 9,648 | 192,104 | 2.0% | 2.0% | 1.5% |
| 2009 | 460 | 10,718 | 228,156 | 2.0% | 2.2% | 1.7% |
| 2011 | 469 | 11,302 | 249,961 | 2.1% | 2.3% | 1.9% |
| 2016 | 509 | 12,494 | 294,008 | 2.3% | 2.4% | 2.1% |

Leading Causes of Death in the Sub-LHIN Planning area, 2001-2004



Census Characteristics

| | Central Hastings | South East LHIN | Ontario |
|---|------------------|-----------------|---------|
| No certificate, degree or diploma (age 25+) | 28.5% | 20.0% | 18.7% |
| Completed post-secondary education (age 25+) | 44.5% | 53.4% | 56.8% |
| Unemployment rate (age 15+) | 6.3% | 6.2% | 6.4% |
| Labour force participation rate (age 15+) | 58.5% | 62.4% | 67.1% |
| Proportion of population living in low income | 12.7% | 11.9% | 14.7% |
| English Mother tongue | 95.2% | 91.5% | 69.8% |
| French Mother tongue | 1.2% | 2.7% | 4.4% |
| Immigrants | 6.3% | 9.3% | 28.3% |
| Recent Immigrants (5 years) | 0.1% | 0.8% | 4.8% |
| Visible minorities | 0.8% | 3.3% | 22.8% |
| Aboriginal Identity | 3.1% | 2.8% | 2.0% |

Health Status

| | Hastings and Prince Edward Counties Health Unit ¹ | | South East LHIN | | Ontario | |
|---|--|--------------------------------|--------------------|--------------------------------|--------------------|--------------------|
| | Total Population | Aged 65 and Older | Total Population | Aged 65 and Older | Total Population | Aged 65 and Older |
| Overall Health Status | | | | | | |
| Self-rated Health: Very Good or Excellent | 53.5 (46.9 - 60) | 38.5 (29.7 - 47.3) | 54.2 (50.4 - 58) | 40.5 (34.5 - 46.5) | 59.9 (58.9 - 60.9) | 37.9 (35.9 - 40) |
| Activity Limitation | 43.0 (37.6 - 48.5) | 61.6 (50.7 - 72.5) | 43.6 (40.3 - 46.9) | 62.7 (56.2 - 69.1) | 33.5 (32.6 - 34.4) | 59.1 (57 - 61.3) |
| Use of Preventive Care | | | | | | |
| Received Flu Shot In Past Year | 48.9 (41.9 - 55.9) | 61.8 (52.4 - 71.2) | 46.9 (43.1 - 50.7) | 70.3 (64.1 - 76.6) | 35.9 (35 - 36.8) | 70.1 (68.2 - 72) |
| Contact With Medical Doctor In Past Year | 79.1 (73.9 - 84.2) | 90.9 (85 - 96.7) | 80.8 (78.2 - 83.4) | 91.6 (88.3 - 94.9) | 81.4 (80.6 - 82.2) | 90.5 (89.4 - 91.7) |
| Health Practices | | | | | | |
| Daily Smokers | 21.1 (15.6 - 26.6) | 12.4 [*] (6.9 - 17.9) | 22.3 (19.3 - 25.4) | 11.4 [*] (7.6 - 15.2) | 16.3 (15.6 - 17) | 7.7 (6.7 - 8.8) |
| Exposed To Second Hand Smoke In Home | 12.4 [*] (7.1 - 17.7) | -- | 11.7 (8.6 - 14.7) | -- | 6.1 (5.6 - 6.6) | 4.6 (3.5 - 5.6) |
| Heavy Alcohol Consumption | 21.3 (14.5 - 28.2) | -- | 22.1 (18.6 - 25.6) | 7.5 [*] (3.6 - 11.5) | 21.7 (20.8 - 22.6) | 7.1 (5.7 - 8.5) |
| Obese Or Overweight | 56.5 (49.7 - 63.4) | 53.2 (42.4 - 64) | 53.8 (49.8 - 57.8) | 54.7 (48.3 - 61) | 49.6 (48.6 - 50.6) | 53.4 (51.3 - 55.6) |
| Physically Inactive | 42.7 (36.9 - 48.5) | 60.9 (51.4 - 70.3) | 44.5 (41 - 48.1) | 53.3 (47 - 59.7) | 49.0 (48 - 50.1) | 54.2 (52.2 - 56.3) |
| Consumes Fruits / Vegetables 5+ Times A Day | 43.2 (36 - 50.4) | 50.5 (39.8 - 61.1) | 42.8 (39.3 - 46.3) | 49.0 (42.3 - 55.6) | 39.7 (38.7 - 40.8) | 41.6 (39.4 - 43.7) |
| Has A Lot Of Stress (Age 18+) | 22.1 (18.1 - 26.2) | -- | 23.9 (21.2 - 26.7) | 8.7 [*] (4.9 - 12.5) | 22.5 (21.7 - 23.3) | 10.9 (9.6 - 12.2) |
| Chronic Conditions | | | | | | |
| Arthritis / Rheumatism | 28.2 (23.4 - 32.9) | 51.7 (42 - 61.3) | 25.6 (22.7 - 28.6) | 51.9 (45.6 - 58.2) | 16.4 (15.8 - 17) | 47.1 (45.1 - 49.1) |
| Diabetes | 8.0 [*] (4.8 - 11.1) | 15.3 [*] (8.6 - 22) | 7.0 (5.5 - 8.6) | 19.6 (14.6 - 24.5) | 6.1 (5.6 - 6.5) | 16.9 (15.2 - 18.6) |
| Asthma | 6.1 [*] (3.7 - 8.5) | 6.9 [*] (3 - 10.9) | 10.0 (7.8 - 12.3) | 9.2 [*] (5.7 - 12.7) | 8.2 (7.7 - 8.8) | 7.3 (6.3 - 8.3) |
| High Blood Pressure | 19.4 (14.7 - 24.1) | 47.9 (35.4 - 60.3) | 19.8 (17.3 - 22.3) | 49.0 (42 - 56) | 16.4 (15.8 - 17.1) | 47.2 (45.1 - 49.3) |

Source: Canadian Community Health Survey (CCHS), 2007

Numbers in brackets represent the 95% confidence intervals (CI) around the estimates.

¹CCHS estimates are not available for sub-LHIN planning areas. Estimates for the Hastings and Prince Edward Counties Health Unit are used for this profile.

-- Because of high sampling variability this estimate is not available

* Value is significantly different than the provincial estimate

Estimates are for the population aged 12 or older, unless otherwise indicated.



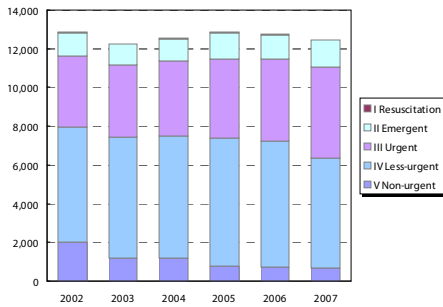
Ontario
Local Health Integration
Network

southeasthin.on.ca

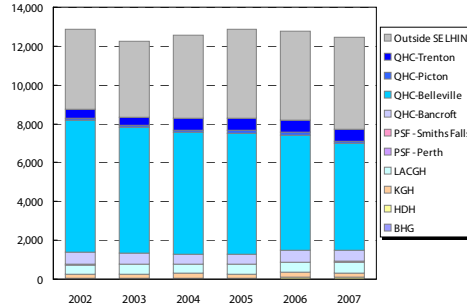
Sub-LHIN Planning Area Profile (cont'd): Central Hastings

Emergency Department Utilization

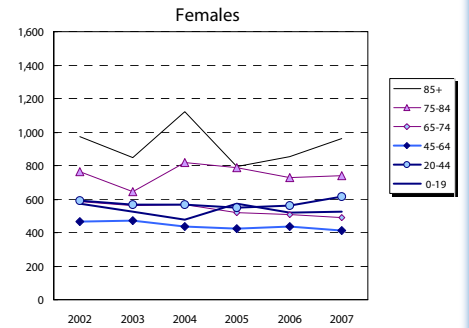
ED Visits by Area Residents by CTAS Level



ED Visits by Institution



Rate (/1,000) of ED Visits by Age Group



Community Support Services (selected)

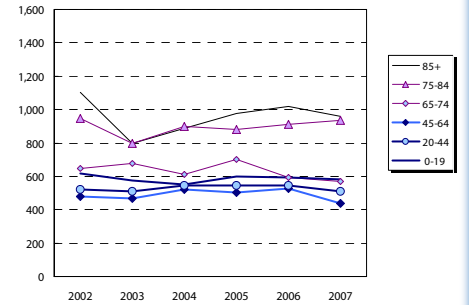
| Head Office Location of Provider | Caregiver Support all Services (hours) | | Meals on Wheels (meals) | | Transportation (1-way trips) | |
|----------------------------------|---|--------|----------------------------|---------|---------------------------------|---------|
| | 2006 | 2012 | 2006 | 2012 | 2006 | 2012 |
| Addington N/C Frontenac | 1,160 | 2,015 | 5,110 | 2,968 | 3,130 | 2,858 |
| Belleville | 7,077 | 12,827 | 18,800 | 20,990 | 5,858 | 5,715 |
| Brockville | 2,590 | 2,970 | 14,000 | 23,111 | 4,500 | 8,015 |
| Central Hastings | 588 | - | 4,100 | 4,867 | 2,800 | 3,289 |
| Kingston | 5,109 | - | 125,063 | 900 | 900 | - |
| North Hastings | 2,600 | 4,695 | 4,500 | 7,573 | 6,500 | 9,419 |
| Prince Edward County | 3,822 | 7,503 | 15,000 | 27,597 | 1,525 | 2,346 |
| Quinte West | 26,109 | 58,984 | 49,675 | 128,120 | 9,380 | 19,223 |
| Smiths Falls, Perth, Lanark | 10,744 | 8,150 | 50,860 | 68,389 | 30,559 | 46,063 |
| Tyendinaga Napanee | 2,780 | 1,101 | 9,500 | 10,148 | 13,000 | 16,205 |
| South East LHIN | 62,579 | 95,927 | 171,545 | 285,078 | 78,152 | 110,430 |

Community Care Access Centre (CCAC)

| Services | 2007/08 | 2012/13 | Change 07-12 | |
|---------------------|----------------|----------------|---------------|-------------|
| | Actual | Projected | # | % |
| Admissions | 8,251 | 11,396 | 3,145 | 38.1% |
| In-Home Acute | 44,307 | 43,457 | (850) | (1.9%) |
| In-Home Maintenance | 216,305 | 228,140 | 11,835 | 5.5% |
| In-Home Rehab | 31,389 | 29,826 | (1,563) | (5.0%) |
| In-Home End-of-Life | 14,559 | 14,177 | (382) | (2.6%) |
| In-Home LTC | 64,034 | 67,614 | 3,580 | 5.6% |
| Residential | 1,406 | 1,394 | (12) | (0.8%) |
| Total | 372,000 | 384,608 | 12,608 | 3.4% |

*Community Health Centre (CHC) Actual and Projected pending verification with local data management personnel

Rate (/1,000) of ED Visits by Age Group



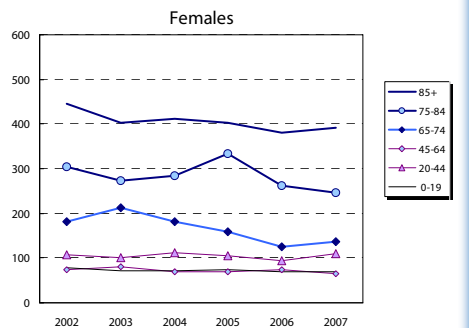
Homemaking/Personal Supp/Attendant/Respite-Phys Dis Outreach

| Area of Service Provision | 2006 | 2012 |
|----------------------------------|---------|--------|
| Hastings/Prince Edward | 34,000 | 17,616 |
| Frontenac/Leeds Grenville/Lanark | 81,972 | 76,044 |
| South East LHIN | 115,972 | 93,660 |

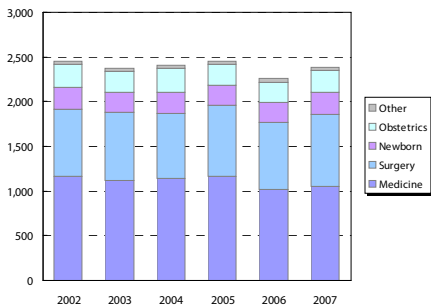
Hospital-based Services

| | 2007/08 Actual | | | | 2012/13 Projected | | | | |
|--|----------------------|-----------------|-------|------------|----------------------|-----------------|--------|------------|---------|
| | To SE LHIN Hospitals | Outside SE LHIN | Total | % of Total | To SE LHIN Hospitals | Outside SE LHIN | Total | % of Total | |
| ER Visits | 7,745 | 62.2% | 4,713 | 37.8% | 12,458 | 100.0% | 11,908 | 4,163 | 53.7% |
| IP Events (Acute Institutions) | | | | | | | | | |
| No. of Separations | 1,860 | 78.0% | 525 | 22.0% | 2,385 | 100.0% | 1,779 | (81) | (4.3%) |
| Acute Days of Stay | 9,111 | 73.8% | 3,230 | 26.2% | 12,341 | 100.0% | 8,398 | (713) | (7.8%) |
| ALC ¹ Separations | 112 | 84.8% | 20 | 15.2% | 132 | 100.0% | 113 | 1 | 1.1% |
| ALC Days of Stay | 1,194 | 56.5% | 921 | 43.5% | 2,115 | 100.0% | 1,756 | 562 | 47.0% |
| Outpatient Events/Clinic Visits | | | | | | | | | |
| Surgical/PARR ² | 2,593 | 81.9% | 574 | 18.1% | 3,167 | 100.0% | 3,145 | 552 | 21.3% |
| Oncology Visits | 1,539 | 94.9% | 83 | 5.1% | 1,622 | 100.0% | 1,307 | (232) | (15.1%) |
| Dialysis Visits | 650 | 73.7% | 232 | 26.3% | 882 | 100.0% | 1,186 | 536 | 82.5% |
| Cardiac Caths | 111 | 74.0% | 39 | 26.0% | 150 | 100.0% | 136 | 25 | 22.3% |
| Radiation Treatments | 901 | 87.6% | 128 | 12.4% | 1,029 | 100.0% | 1,082 | 181 | 20.1% |
| All Outpatient Events | 5,794 | 64.8% | 3,145 | 35.2% | 8,939 | 100.0% | 6,856 | 1,062 | 18.3% |
| Rehabilitation | | | | | | | | | |
| Cases | 17 | 73.9% | 6 | 26.1% | 23 | 100.0% | 23 | 6 | 33.6% |
| Days | 505 | 76.2% | 158 | 23.8% | 663 | 100.0% | 738 | 233 | 46.1% |
| Complex Continuing Care | | | | | | | | | |
| Cases | 45 | 95.7% | 2 | 4.3% | 47 | 100.0% | 53 | 8 | 17.3% |
| Days | 1,943 | 97.8% | 44 | 2.2% | 1,987 | 100.0% | 2,380 | 437 | 22.5% |
| Adult Mental Health | | | | | | | | | |
| Cases | 74 | 92.5% | 6 | 7.5% | 80 | 100.0% | 60 | (14) | (19.2%) |
| Days | 764 | 90.1% | 84 | 9.9% | 848 | 100.0% | 856 | 92 | 12.0% |

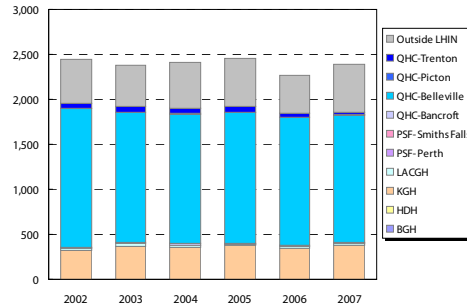
Rate (/1,000) of Inpatient Events by Age Group



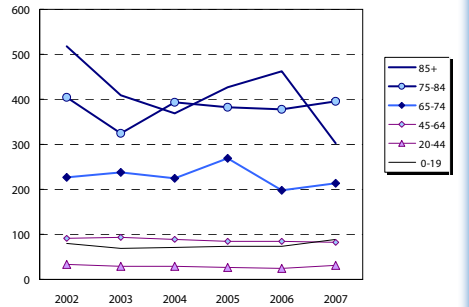
Inpatient Visits by Area Residents by Service Type



Inpatient Visits by Institution



Rate (/1,000) of Inpatient Events by Age Group



Hospital In-Patient Utilization