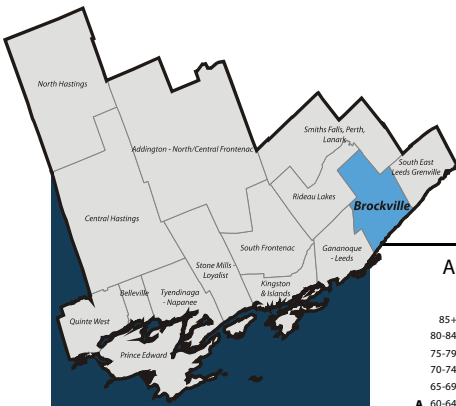


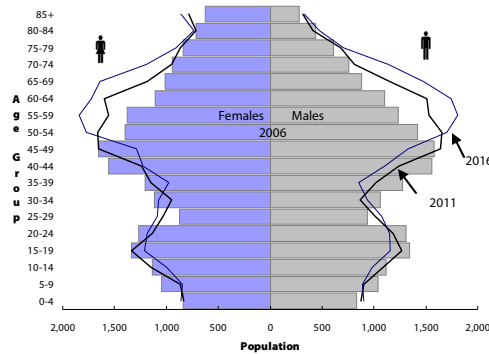
# South East Local Health Integration Network (LHIN) Sub-LHIN Planning Area Profile: Brockville



## Quick Facts:

Size: 830 km<sup>2</sup>  
 Population (2006)  
 Total: 38,050  
 Aged 65+: 7,110  
 % 65+: 18.7%  
 Density: 45.9 persons/km<sup>2</sup>

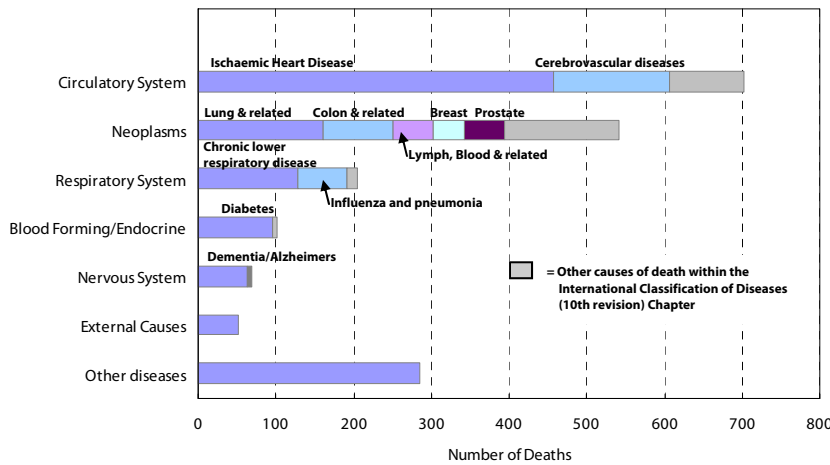
Age Distribution, 2006, 2011 and 2016 (projected)



## Demography

Year	South East LHIN		South East LHIN		Ontario
	Brockville	Ontario	Brockville	Ontario	
<b>Population Counts</b>					
Total Population					
2006	38,829	12,705,344			
2009	39,204	13,050,754			
2011	39,826	13,349,125			
2016	41,195	14,149,965			
<b>Percentage of Total Population</b>					
Aged 65+					
2006	7,107	1,649,293	18.3%	16.7%	13.0%
2009	7,534	1,770,571	19.2%	17.7%	13.6%
2011	7,863	1,864,941	19.7%	18.3%	14.0%
2016	9,459	2,214,279	23.0%	20.6%	15.6%
Aged 75+					
2006	3,509	781,257	9.0%	7.7%	6.1%
2009	3,651	837,672	9.3%	8.0%	6.4%
2011	3,767	871,594	9.5%	8.2%	6.5%
2016	4,019	959,871	9.8%	8.7%	6.8%
Aged 85+					
2006	905	192,104	2.3%	2.0%	1.5%
2009	1,006	228,156	2.6%	2.2%	1.7%
2011	1,096	249,961	2.8%	2.3%	1.9%
2016	1,186	294,008	2.9%	2.4%	2.1%

Leading Causes of Death in the Sub-LHIN Planning area, 2001-2004



## Census Characteristics

	Brockville	South East LHIN	Ontario
No certificate, degree or diploma (age 25+)	21.2%	20.0%	18.7%
Completed post-secondary education (age 25+)	52.0%	53.4%	56.8%
Unemployment rate (age 15+)	6.5%	6.2%	6.4%
Labour force participation rate (age 15+)	62.3%	62.4%	67.1%
Proportion of population living in low income	11.0%	11.9%	14.7%
English Mother tongue	91.9%	91.5%	69.8%
French Mother tongue	2.8%	2.7%	4.4%
Immigrants	8.2%	9.3%	28.3%
Recent Immigrants (5 years)	0.5%	0.8%	4.8%
Visible minorities	2.2%	3.3%	22.8%
Aboriginal Identity	1.4%	2.8%	2.0%

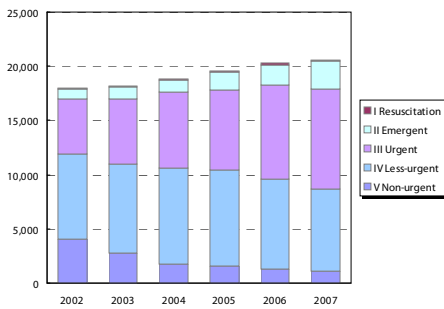
## Health Status

	Leeds, Grenville & Lanark District Health Unit <sup>1</sup>				South East LHIN				Ontario			
	Total Population		Aged 65 and Older		Total Population		Aged 65 and Older		Total Population		Aged 65 and Older	
<b>Overall Health Status</b>												
Self-rated Health: Very Good or Excellent	54.8	(49.2 - 60.3)	38.2	(26.6 - 49.7)	54.2	(50.4 - 58)	40.5	(34.5 - 46.5)	59.9	(58.9 - 60.9)	37.9	(35.9 - 40)
Activity Limitation	47.2	(41.7 - 52.7)	67.2	(57.6 - 76.8)	43.6	(40.3 - 46.9)	62.7	(56.2 - 69.1)	33.5	(32.6 - 34.4)	59.1	(57 - 61.3)
<b>Use of Preventive Care</b>												
Received Flu Shot In Past Year	44.6	(38.8 - 50.3)	70.9	(58.9 - 82.9)	46.9	(43.1 - 50.7)	70.3	(64.1 - 76.6)	35.9	(35 - 36.8)	70.1	(68.2 - 72)
Contact With Medical Doctor In Past Year	79.1	(74.8 - 83.3)	89.5	(82.3 - 96.7)	80.8	(78.2 - 83.4)	91.6	(88.3 - 94.9)	81.4	(80.6 - 82.2)	90.5	(89.4 - 91.7)
<b>Health Practices</b>												
Daily Smokers	21.6	(17.2 - 26)	--		22.3	(19.3 - 25.4)	11.4 <sup>*</sup>	(7.6 - 15.2)	16.3	(15.6 - 17)	7.7	(6.7 - 8.8)
Exposed To Second Hand Smoke In Home	12.4 <sup>†</sup>	(7.5 - 17.3)	--		11.7	(8.6 - 14.7)	--		6.1	(5.6 - 6.6)	4.6	(3.5 - 5.6)
Heavy Alcohol Consumption	23.0	(17 - 28.9)	--		22.1	(18.6 - 25.6)	7.5 <sup>*</sup>	(3.6 - 11.5)	21.7	(20.8 - 22.6)	7.1	(5.7 - 8.5)
Obese Or Overweight	52.1	(46.6 - 57.6)	61.7	(49.8 - 73.6)	53.8	(49.8 - 57.8)	54.7	(48.3 - 61)	49.6	(48.6 - 50.6)	53.4	(51.3 - 55.6)
Physically Inactive	41.9	(36.4 - 47.5)	45.1	(35.3 - 54.9)	44.5	(41 - 48.1)	53.3	(47 - 59.7)	49.0	(48 - 50.1)	54.2	(52.2 - 56.3)
Consumes Fruits / Vegetables 5+ Times A Day	38.5	(33.3 - 43.7)	44.2	(33.8 - 54.6)	42.8	(39.3 - 46.3)	49.0	(42.3 - 55.6)	39.7	(38.7 - 40.8)	41.6	(39.4 - 43.7)
Has A Lot Of Stress (Age 18+)	24.8	(19.7 - 29.9)	16.1 <sup>*</sup>	(6.6 - 25.6)	23.9	(21.2 - 26.7)	8.7 <sup>*</sup>	(4.9 - 12.5)	22.5	(21.7 - 23.3)	10.9	(9.6 - 12.2)
<b>Chronic Conditions</b>												
Arthritis / Rheumatism	25.2	(20.8 - 29.7)	48.7	(37.1 - 60.3)	25.6	(22.7 - 28.6)	51.9	(45.6 - 58.2)	16.4	(15.8 - 17)	47.1	(45.1 - 49.1)
Diabetes	7.1	(4.8 - 9.3)	20.9 <sup>*</sup>	(11.5 - 30.3)	7.0	(5.5 - 8.6)	19.6	(14.6 - 24.5)	6.1	(5.6 - 6.5)	16.9	(15.2 - 18.6)
Asthma	11.9 <sup>†</sup>	(7.7 - 16)	--		10.0	(7.8 - 12.3)	9.2 <sup>*</sup>	(5.7 - 12.7)	8.2	(7.7 - 8.8)	7.3	(6.3 - 8.3)
High Blood Pressure	18.2	(14.6 - 21.7)	45.0	(35 - 55.1)	19.8	(17.3 - 22.3)	49.0	(42 - 56)	16.4	(15.8 - 17.1)	47.2	(45.1 - 49.3)

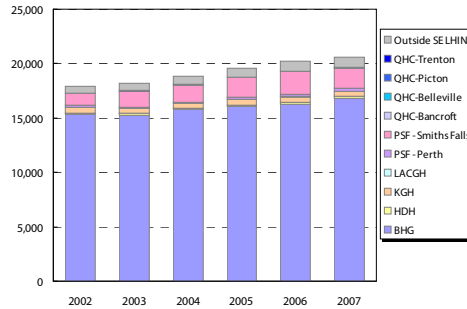
Source: Canadian Community Health Survey (CCHS), 2007  
 Numbers in brackets represent the 95% confidence intervals (CI) around the estimates.  
<sup>†</sup>CCHS estimates are not available for sub-LHIN planning areas. Estimates for the Leeds, Grenville and Lanark District Health Unit are used for this profile.  
 -- Because of high sampling variability this estimate is not available  
<sup>\*</sup> Value is significantly different than the provincial estimate  
 Estimates are for the population aged 12 or older, unless otherwise indicated.

**Emergency Department Utilization**

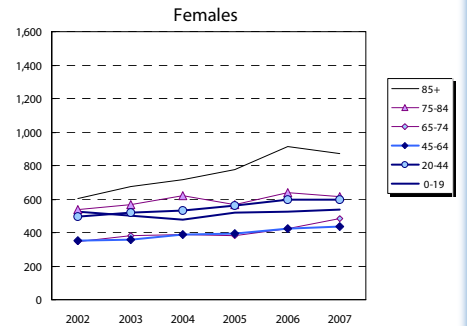
ED Visits by Area Residents by CTAS Level



ED Visits by Institution



Rate (/1,000) of ED Visits by Age Group



Community Support Services (selected)

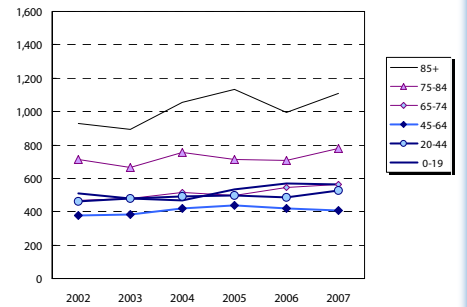
Head Office Location of Provider	Caregiver Support all Services (hours)		Meals on Wheels (meals)		Transportation (1-way trips)	
	2006	2012	2006	2012	2006	2012
Addington N/C Frontenac	1,160	2,015	5,110	2,968	3,130	2,858
Belleville	7,077	12,827	18,800	20,990	5,858	5,715
Brockville	2,590	2,970	14,000	23,111	4,500	8,015
Central Hastings	588	-	4,100	4,867	2,800	3,289
Kingston	5,109	-	125,063	900	900	-
North Hastings	2,600	4,695	4,500	7,573	6,500	9,419
Prince Edward County	3,822	7,503	15,000	27,597	1,525	2,346
Quinte West	26,109	58,984	49,675	128,120	9,380	19,223
Smiths Falls, Perth, Lanark	10,744	8,150	50,860	68,389	30,559	46,063
Tyendinaga Napanee	2,780	1,101	9,500	10,148	13,000	16,205
South East LHIN	62,579	95,927	171,545	285,078	78,152	110,430

Community Care Access Centre (CCAC)

Services	2007/08	2012/13	Change 07-12	
	Actual	Projected	#	%
Admissions	8,251	11,396	3,145	38.1%
In-Home Acute	44,307	43,457	( 850)	(1.9%)
In-Home Maintenance	216,305	228,140	11,835	5.5%
In-Home Rehab	31,389	29,826	(1,563)	(5.0%)
In-Home End-of-Life	14,559	14,177	( 382)	(2.6%)
In-Home LTC	64,034	67,614	3,580	5.6%
Residential	1,406	1,394	( 12)	(0.8%)
<b>Total</b>	<b>372,000</b>	<b>384,608</b>	<b>12,608</b>	<b>3.4%</b>

\*Community Health Centre (CHC) Actual and Projected pending verification with local data management personnel

Rate (/1,000) of Inpatient Events by Age Group



Homemaking/Personal Supp/Attendant/Respite-Phys Dis Outreach

Area of Service Provision	2006	2012
Hastings/Prince Edward	34,000	17,616
Frontenac/Leeds Grenville/Lanark	81,972	76,044
South East LHIN	115,972	93,660

**Hospital-based Services**

	2007/08 Actual				2012/13 Projected			
	To SELHIN Hospitals	Outside SELHIN	Total	% of Total	To SELHIN Hospitals	Outside SELHIN	Total	% of Total
<b>ER Visits</b>	19,649	934	20,583	100%	20,988	1,339	22,327	100%
<b>IP Events (Acute Institutions)</b>								
No. of Separations	3,491	519	4,010	100%	3,849	358	4,207	100%
Acute Days of Stay	19,451	2,936	22,387	100%	21,702	2,251	23,953	100%
ALC <sup>1</sup> Separations	101	4	105	100%	133	32	165	100%
ALC Days of Stay	3,005	49	3,054	100%	5,158	2,153	7,311	100%
<b>Outpatient Events/Clinic Visits</b>								
Surgical/PARR <sup>2</sup>	6,162	456	6,618	100%	7,223	1,061	8,284	100%
Oncology Visits	618	167	785	100%	883	265	1,148	100%
Dialysis Visits	460	317	777	100%	818	358	1,176	100%
Cardiac Caths	169	43	212	100%	198	29	227	100%
Radiation Treatments	1,048	427	1,475	100%	1,944	896	2,840	100%
All Outpatient Events	8,457	7,223	15,680	100%	11,066	2,609	13,675	100%
<b>Rehabilitation</b>								
Cases	40	14	54	100%	50	10	60	100%
Days	1,132	211	1,343	100%	1,463	331	1,794	100%
<b>Complex Continuing Care</b>								
Cases	111	1	112	100%	137	26	163	100%
Days	3,770	99.4%	4	0.1%	5,241	1,471	6,712	100%
<b>Adult Mental Health</b>								
Cases	192	10	202	100%	198	6	204	100%
Days	2,848	163	3,011	100%	3,201	353	3,554	100%

**Community Mental Health and Addictions**

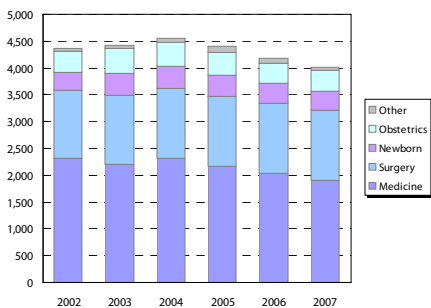
Individuals Served (2007)

Head Office Location of Provider	2007
Belleville	4,629
Brockville	5,392
Kingston & Islands	7,560
Smiths Falls, Perth, Lanark	9,091
Tyendinaga Napanee	1,758
South East LHIN	28,430

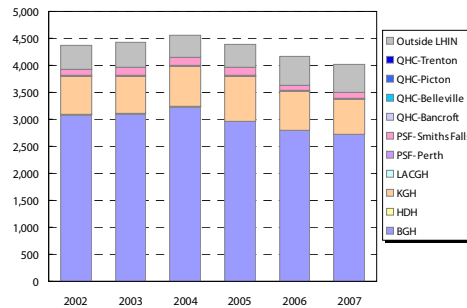
Clients with Open Admission to program...

County	Problem Gambling		Substance Abuse	
	2004	2008	2004	2008
Frontenac	39	86	1,462	2,023
Hastings	21	15	811	1,043
Lanark	7	26	290	600
Leeds-Gren.	35	50	429	806
Lenn. & Add.	12	15	489	841
Prince Ed.	<5	<5	105	151

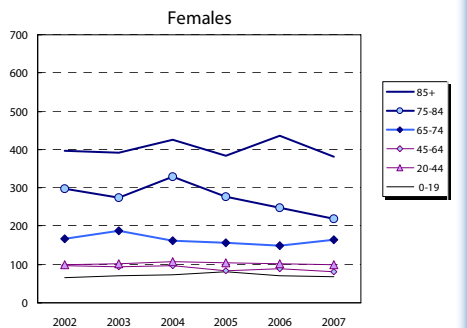
Inpatient Visits by Area Residents by Service Type



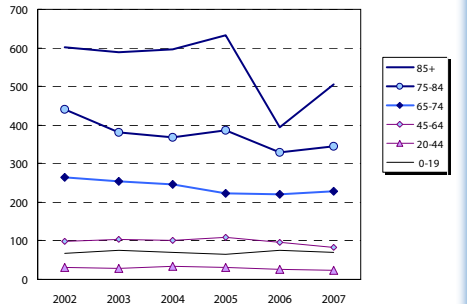
Inpatient Visits by Institution



Rate (/1,000) of Inpatient Events by Age Group



Rate (/1,000) of Inpatient Events by Age Group



**Hospital In-Patient Utilization**