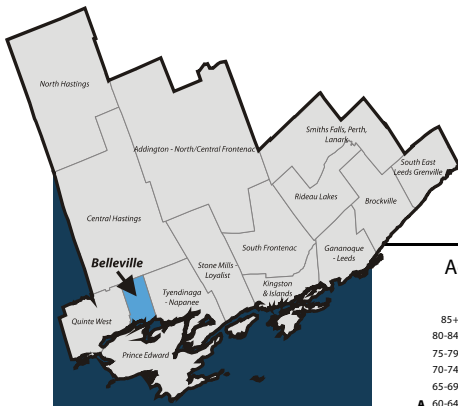


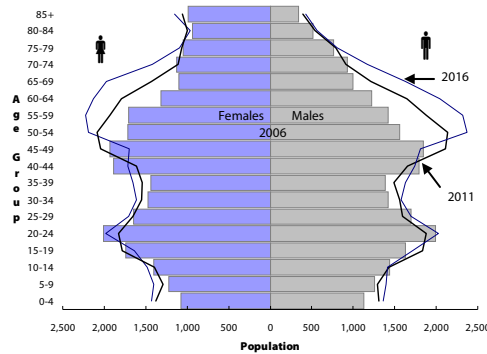
South East Local Health Integration Network (LHIN) Sub-LHIN Planning Area Profile: Belleville



Quick Facts:

Size: 250 km²
 Population (2006)
 Total: 48,820
 Aged 65+: 8,770
 % 65+: 18.0%
 Density: 197.8 persons/km²

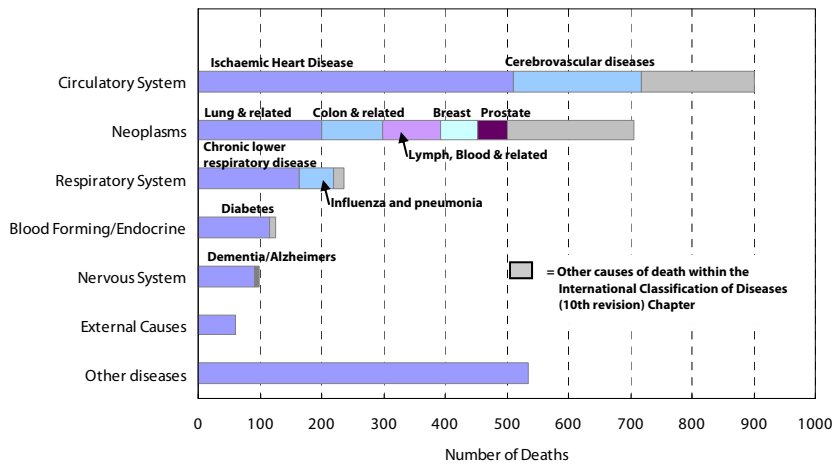
Age Distribution, 2006, 2011 and 2016 (projected)



Demography

Year	South East LHIN			South East Ontario		
	Belleville	Belleville	Ontario	Belleville	Belleville	Ontario
Population Counts						
Total Population						
2006	49,115	482,078	12,705,344			
2009	51,123	486,101	13,050,754			
2011	53,200	492,452	13,349,125			
2016	57,151	510,626	14,149,965			
Percentage of Total Population						
Aged 65+						
2006	8,765	80,630	1,649,293	17.8%	16.7%	13.0%
2009	9,154	86,097	1,770,571	17.9%	17.7%	13.6%
2011	9,512	90,168	1,864,941	17.9%	18.3%	14.0%
2016	11,204	105,224	2,214,279	19.6%	20.6%	15.6%
Aged 75+						
2006	4,607	37,269	781,257	9.4%	7.7%	6.1%
2009	4,729	38,990	837,672	9.3%	8.0%	6.4%
2011	4,845	40,324	871,594	9.1%	8.2%	6.5%
2016	5,012	44,307	959,871	8.8%	8.7%	6.8%
Aged 85+						
2006	1,336	9,648	192,104	2.7%	2.0%	1.5%
2009	1,424	10,718	228,156	2.8%	2.2%	1.7%
2011	1,451	11,302	249,961	2.7%	2.3%	1.9%
2016	1,577	12,494	294,008	2.8%	2.4%	2.1%

Leading Causes of Death in the Sub-LHIN Planning area, 2001-2004



Census Characteristics

	South East LHIN		
	Belleville	Belleville	Ontario
No certificate, degree or diploma (age 25+)	21.6%	20.0%	18.7%
Completed post-secondary education (age 25+)	51.2%	53.4%	56.8%
Unemployment rate (age 15+)	6.5%	6.2%	6.4%
Labour force participation rate (age 15+)	63.5%	62.4%	67.1%
Proportion of population living in low income	15.1%	11.9%	14.7%
English Mother tongue	91.2%	91.5%	69.8%
French Mother tongue	1.7%	2.7%	4.4%
Immigrants	9.9%	9.3%	28.3%
Recent Immigrants (5 years)	1.1%	0.8%	4.8%
Visible minorities	5.3%	3.3%	22.8%
Aboriginal Identity	2.9%	2.8%	2.0%

Health Status

	Hastings and Prince Edward Counties Health Unit ¹				South East LHIN				Ontario			
	Total Population		Aged 65 and Older		Total Population		Aged 65 and Older		Total Population		Aged 65 and Older	
Overall Health Status												
Self-rated Health: Very Good or Excellent	53.5	(46.9 - 60)	38.5	(29.7 - 47.3)	54.2	(50.4 - 58)	40.5	(34.5 - 46.5)	59.9	(58.9 - 60.9)	37.9	(35.9 - 40)
Activity Limitation	43.0	(37.6 - 48.5)	61.6	(50.7 - 72.5)	43.6	(40.3 - 46.9)	62.7	(56.2 - 69.1)	33.5	(32.6 - 34.4)	59.1	(57 - 61.3)
Use of Preventive Care												
Received Flu Shot In Past Year	48.9	(41.9 - 55.9)	61.8	(52.4 - 71.2)	46.9	(43.1 - 50.7)	70.3	(64.1 - 76.6)	35.9	(35 - 36.8)	70.1	(68.2 - 72)
Contact With Medical Doctor In Past Year	79.1	(73.9 - 84.2)	90.9	(85 - 96.7)	80.8	(78.2 - 83.4)	91.6	(88.3 - 94.9)	81.4	(80.6 - 82.2)	90.5	(89.4 - 91.7)
Health Practices												
Daily Smokers	21.1	(15.6 - 26.6)	12.4 [*]	(6.9 - 17.9)	22.3	(19.3 - 25.4)	11.4 [*]	(7.6 - 15.2)	16.3	(15.6 - 17)	7.7	(6.7 - 8.8)
Exposed To Second Hand Smoke In Home	12.4 [*]	(7.1 - 17.7)	--		11.7	(8.6 - 14.7)	--		6.1	(5.6 - 6.6)	4.6	(3.5 - 5.6)
Heavy Alcohol Consumption	21.3	(14.5 - 28.2)	--		22.1	(18.6 - 25.6)	7.5 [*]	(3.6 - 11.5)	21.7	(20.8 - 22.6)	7.1	(5.7 - 8.5)
Obese Or Overweight	56.5	(49.7 - 63.4)	53.2	(42.4 - 64)	53.8	(49.8 - 57.8)	54.7	(48.3 - 61)	49.6	(48.6 - 50.6)	53.4	(51.3 - 55.6)
Physically Inactive	42.7	(36.9 - 48.5)	60.9	(51.4 - 70.3)	44.5	(41 - 48.1)	53.3	(47 - 59.7)	49.0	(48 - 50.1)	54.2	(52.2 - 56.3)
Consumes Fruits / Vegetables 5+ Times A Day	43.2	(36 - 50.4)	50.5	(39.8 - 61.1)	42.8	(39.3 - 46.3)	49.0	(42.3 - 55.6)	39.7	(38.7 - 40.8)	41.6	(39.4 - 43.7)
Has A Lot Of Stress (Age 18+)	22.1	(18.1 - 26.2)	--		23.9	(21.2 - 26.7)	8.7 [*]	(4.9 - 12.5)	22.5	(21.7 - 23.3)	10.9	(9.6 - 12.2)
Chronic Conditions												
Arthritis / Rheumatism	28.2	(23.4 - 32.9)	51.7	(42 - 61.3)	25.6	(22.7 - 28.6)	51.9	(45.6 - 58.2)	16.4	(15.8 - 17)	47.1	(45.1 - 49.1)
Diabetes	8.0 [*]	(4.8 - 11.1)	15.3 [*]	(8.6 - 22)	7.0	(5.5 - 8.6)	19.6	(14.6 - 24.5)	6.1	(5.6 - 6.5)	16.9	(15.2 - 18.6)
Asthma	6.1 [*]	(3.7 - 8.5)	6.9 [*]	(3 - 10.9)	10.0	(7.8 - 12.3)	9.2 [*]	(5.7 - 12.7)	8.2	(7.7 - 8.8)	7.3	(6.3 - 8.3)
High Blood Pressure	19.4	(14.7 - 24.1)	47.9	(35.4 - 60.3)	19.8	(17.3 - 22.3)	49.0	(42 - 56)	16.4	(15.8 - 17.1)	47.2	(45.1 - 49.3)

Source: Canadian Community Health Survey (CCHS), 2007

Numbers in brackets represent the 95% confidence intervals (CI) around the estimates.

¹CCHS estimates are not available for sub-LHIN planning areas. Estimates for the Hastings and Prince Edward Counties Health Unit are used for this profile.

-- Because of high sampling variability this estimate is not available

* Value is significantly different than the provincial estimate

Estimates are for the population aged 12 or older, unless otherwise indicated.

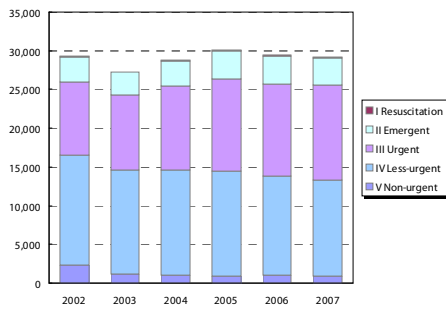


Ontario
Local Health Integration
Network

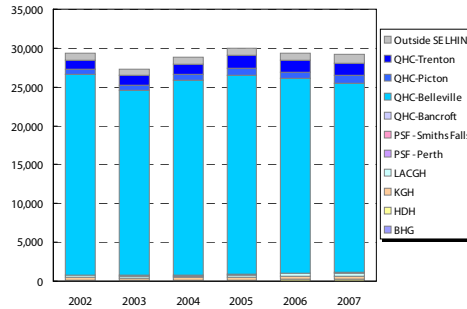
southeasthin.on.ca

Emergency Department Utilization

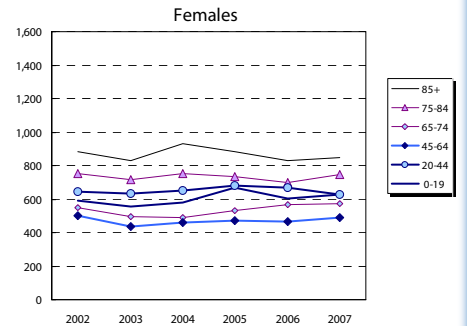
ED Visits by Area Residents by CTAS Level



ED Visits by Institution



Rate (/1,000) of ED Visits by Age Group



Community Support Services (selected)

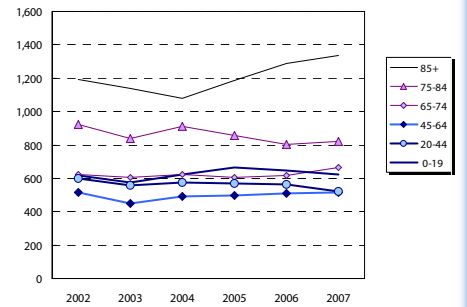
Head Office Location of Provider	Caregiver Support all Services (hours)		Meals on Wheels (meals)		Transportation (1-way trips)	
	2006	2012	2006	2012	2006	2012
Addington N/C Frontenac	1,160	2,015	5,110	2,968	3,130	2,858
Belleville	7,077	12,827	18,800	20,990	5,858	5,715
Brockville	2,590	2,970	14,000	23,111	4,500	8,015
Central Hastings	588	-	4,100	4,867	2,800	3,289
Kingston	5,109	-	125,063	900	900	-
North Hastings	2,600	4,695	4,500	7,573	6,500	9,419
Prince Edward County	3,822	7,503	15,000	27,597	1,525	2,346
Quinte West	26,109	58,984	49,675	128,120	9,380	19,223
Smiths Falls, Perth, Lanark	10,744	8,150	50,860	68,389	30,559	46,063
Tyendinaga Napanee	2,780	1,101	9,500	10,148	13,000	16,205
South East LHIN	62,579	95,927	171,545	285,078	78,152	110,430

Community Care Access Centre (CCAC)

Services	2007/08	20012/13	Change 07-12	
	Actual	Projected	#	%
Admissions	8,251	11,396	3,145	38.1%
Services				
In-Home Acute	44,307	43,457	(850)	(1.9%)
In-Home Maintenance	216,305	228,140	11,835	5.5%
In-Home Rehab	31,389	29,826	(1,563)	(5.0%)
In-Home End-of-Life	14,559	14,177	(382)	(2.6%)
In-Home LTC Residential	64,034	67,614	3,580	5.6%
	1,406	1,394	(12)	(0.8%)
Total	372,000	384,608	12,608	3.4%

*Community Health Centre (CHC) Actual and Projected pending verification with local data management personnel

Rate (/1,000) of Inpatient Events by Age Group



Homemaking/Personal Supp/Attendant/Respite-Phys Dis Outreach

Area of Service Provision	2006	2012
Hastings/Prince Edward	34,000	17,616
Frontenac/Leeds Grenville/Lanark	81,972	76,044
South East LHIN	115,972	93,660

Hospital-based Services

	2007/08 Actual				2012/13 Projected			
	To SE LHIN Hospitals	Outside SELHIN	Total	% of Total	To SE LHIN Hospitals	Outside SELHIN	Total	% of Total
ER Visits	28,105	1,097	29,202	96.2%	31,983	3,878	35,861	89.2%
IP Events (Acute Institutions)								
No. of Separations	5,206	368	5,574	93.4%	5,794	588	6,382	90.8%
Acute Days of Stay	25,670	2,226	27,896	92.2%	26,561	891	27,452	96.8%
ALC Separations	379	9	388	97.7%	394	15	409	96.3%
ALC Days of Stay	5,811	234	6,045	96.1%	5,916	105	6,021	98.3%
Outpatient Events/Clinic Visits								
Surgical/PARR*	6,427	397	6,824	94.2%	7,710	1,283	8,993	85.7%
Oncology Visits	3,273	68	3,341	98.0%	2,932	(341)	2,591	74.9%
Dialysis Visits	5,727	3	5,730	99.9%	6,759	1,032	7,791	86.8%
Cardiac Caths	230	22	252	91.3%	241	11	252	95.6%
Radiation Treatments	2,708	89	2,797	96.8%	2,908	200	3,108	93.6%
All Outpatient Events	18,365	7,710	26,075	70.4%	20,550	2,185	22,735	84.3%
Rehabilitation								
Cases	57	9	66	86.4%	80	23	103	77.7%
Days	2,239	70	2,309	97.0%	3,072	833	3,905	78.7%
Complex Continuing Care								
Cases	163	1	164	99.4%	168	5	173	96.5%
Days	7,377	18	7,395	99.8%	8,103	726	8,829	91.8%
Adult Mental Health								
Cases	234	15	249	94.0%	247	13	260	94.6%
Days	2,510	237	2,747	91.4%	4,554	2,044	6,598	69.0%

Community Mental Health and Addictions

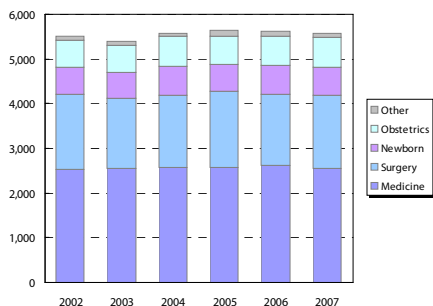
Individuals Served (2007)

Head Office Location of Provider	2007
Belleville	4,629
Brockville	5,392
Kingston & Islands	7,560
Smiths Falls, Perth, Lanark	9,091
Tyendinaga Napanee	1,758
South East LHIN	28,430

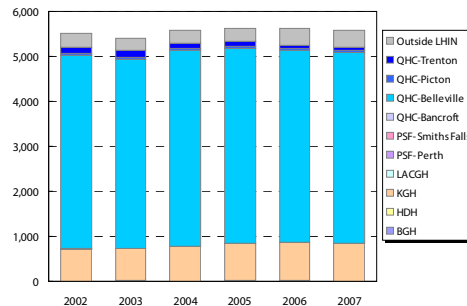
Clients with Open Admission to program...

County	Problem Gambling		Substance Abuse	
	2004	2008	2004	2008
Frontenac	39	86	1,462	2,023
Hastings	21	15	811	1,043
Lanark	7	26	290	600
Leeds-Gren.	35	50	429	806
Lenn. & Add.	12	15	489	841
Prince Ed.	<5	<5	105	151

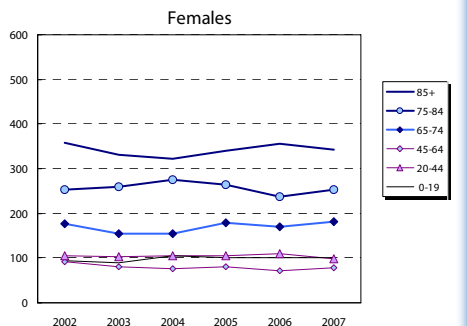
Inpatient Visits by Area Residents by Service Type



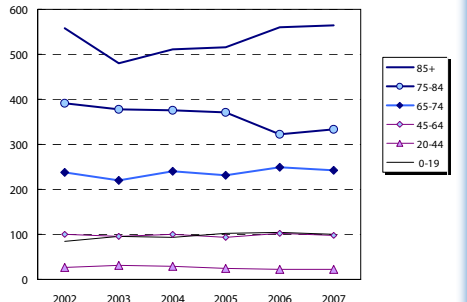
Inpatient Visits by Institution



Rate (/1,000) of Inpatient Events by Age Group



Rate (/1,000) of Inpatient Events by Age Group



Hospital In-Patient Utilization