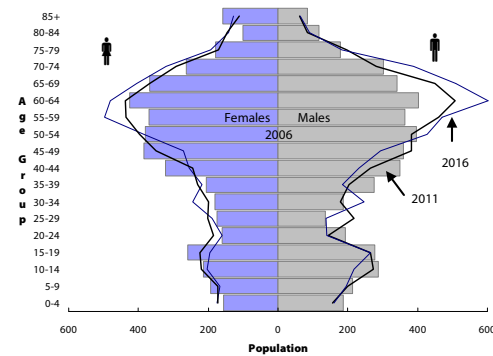


# South East Local Health Integration Network (LHIN) Sub-LHIN Planning Area Profile: Addington, North and Central Frontenac

Age Distribution, 2006, 2011 and 2016 (projected)



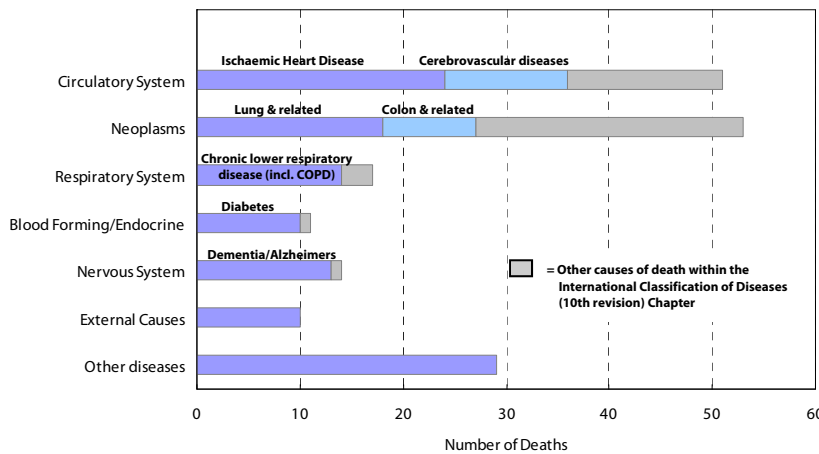
## Demography

Year	Addington			South East		
	N/C Front.	LHIN	Ontario	N/C Front.	LHIN	Ontario
<b>Population Counts</b>						
Total Population						
2006	9,145	482,078	12,705,344			
2009	9,155	486,101	13,050,754			
2011	9,260	492,452	13,349,125			
2016	9,430	510,626	14,149,965			
<b>Percentage of Total Population</b>						
Aged 65+						
2006	2,092	80,630	1,649,293	22.9%	16.7%	13.0%
2009	2,144	86,097	1,770,571	23.4%	17.7%	13.6%
2011	2,162	90,168	1,864,941	23.3%	18.3%	14.0%
2016	2,422	105,224	2,214,279	25.7%	20.6%	15.6%
Aged 75+						
2006	818	37,269	781,257	8.9%	7.7%	6.1%
2009	800	38,990	837,672	8.7%	8.0%	6.4%
2011	772	40,324	871,594	8.3%	8.2%	6.5%
2016	799	44,307	959,871	8.5%	8.7%	6.8%
Aged 85+						
2006	244	9,648	192,104	2.7%	2.0%	1.5%
2009	213	10,718	228,156	2.3%	2.2%	1.7%
2011	174	11,302	249,961	1.9%	2.3%	1.9%
2016	190	12,494	294,008	2.0%	2.4%	2.1%

### Quick Facts:

Size: 3,390 km<sup>2</sup>  
 Population (2006)  
 Total: 9,080  
 Aged 65+: 2,090  
 % 65+: 23.0%  
 Density: 2.7 persons/km<sup>2</sup>

Leading Causes of Death in the Sub-LHIN Planning area, 2001-2004



## Census Characteristics

	Addington N/C Front.	South East LHIN	Ontario
No certificate, degree or diploma (age 25+)	30.8%	20.0%	18.7%
Completed post-secondary education (age 25+)	42.1%	53.4%	56.8%
Unemployment rate (age 15+)	6.3%	6.2%	6.4%
Labour force participation rate (age 15+)	47.6%	62.4%	67.1%
Proportion of population living in low income	13.6%	11.9%	14.7%
English Mother tongue	93.1%	91.5%	69.8%
French Mother tongue	1.1%	2.7%	4.4%
Immigrants	7.4%	9.3%	28.3%
Recent Immigrants (5 years)	0.1%	0.8%	4.8%
Visible minorities	2.1%	3.3%	22.8%
Aboriginal Identity	7.2%	2.8%	2.0%

## Health Status

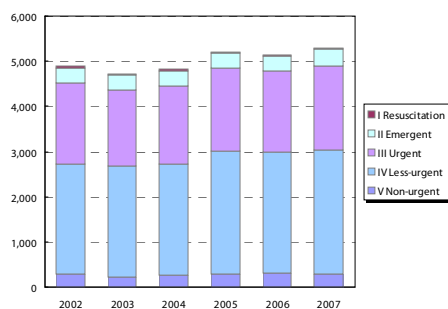
	Kingston, Frontenac and Lennox & Addington Public Health <sup>1</sup>				South East LHIN				Ontario			
	Total Population		Aged 65 and Older		Total Population		Aged 65 and Older		Total Population		Aged 65 and Older	
<b>Overall Health Status</b>												
Self-rated Health: Very Good or Excellent	57.1	(51.5 - 62.6)	46.4	(35.9 - 57)	54.2	(50.4 - 58)	40.5	(34.5 - 46.5)	59.9	(58.9 - 60.9)	37.9	(35.9 - 40)
Activity Limitation	41.3	(36.2 - 46.3)	59.1	(48.6 - 69.6)	43.6	(40.3 - 46.9)	62.7	(56.2 - 69.1)	33.5	(32.6 - 34.4)	59.1	(57 - 61.3)
<b>Use of Preventive Care</b>												
Received Flu Shot In Past Year	46.0	(40.9 - 51.1)	81.4	(73.7 - 89.1)	46.9	(43.1 - 50.7)	70.3	(64.1 - 76.6)	35.9	(35 - 36.8)	70.1	(68.2 - 72)
Contact With Medical Doctor In Past Year	83.6	(79.7 - 87.5)	93.1	(88.4 - 97.9)	80.8	(78.2 - 83.4)	91.6	(88.3 - 94.9)	81.4	(80.6 - 82.2)	90.5	(89.4 - 91.7)
<b>Health Practices</b>												
Daily Smokers	22.8	(17.8 - 27.8)	--		22.3	(19.3 - 25.4)	11.4*	(7.6 - 15.2)	16.3	(15.6 - 17)	7.7	(6.7 - 8.8)
Exposed To Second Hand Smoke In Home	10.4	(5.1 - 15.7)	--		11.7	(8.6 - 14.7)	--		6.1	(5.6 - 6.6)	4.6	(3.5 - 5.6)
Heavy Alcohol Consumption	21.0	(16.2 - 25.8)	--		22.1	(18.6 - 25.6)	7.5*	(3.6 - 11.5)	21.7	(20.8 - 22.6)	7.1	(5.7 - 8.5)
Obese Or Overweight	52.5	(46.2 - 58.9)	51.6	(41.5 - 61.7)	53.8	(49.8 - 57.8)	54.7	(48.3 - 61)	49.6	(48.6 - 50.6)	53.4	(51.3 - 55.6)
Physically Inactive	45.3	(39.8 - 50.9)	49.6	(39.5 - 59.7)	44.5	(41 - 48.1)	53.3	(47 - 59.7)	49.0	(48 - 50.1)	54.2	(52.2 - 56.3)
Consumes Fruits / Vegetables 5+ Times A Day	42.3	(37.2 - 47.4)	51.6	(39.4 - 63.9)	42.8	(39.3 - 46.3)	49.0	(42.3 - 55.6)	39.7	(38.7 - 40.8)	41.6	(39.4 - 43.7)
Has A Lot Of Stress (Age 18+)	23.4	(19 - 27.9)	--		23.9	(21.2 - 26.7)	8.7*	(4.9 - 12.5)	22.5	(21.7 - 23.3)	10.9	(9.6 - 12.2)
<b>Chronic Conditions</b>												
Arthritis / Rheumatism	22.2	(17.5 - 26.9)	54.4	(42.9 - 65.9)	25.6	(22.7 - 28.6)	51.9	(45.6 - 58.2)	16.4	(15.8 - 17)	47.1	(45.1 - 49.1)
Diabetes	6.2*	(4 - 8.4)	22.2*	(14 - 30.5)	7.0	(5.5 - 8.6)	19.6	(14.6 - 24.5)	6.1	(5.6 - 6.5)	16.9	(15.2 - 18.6)
Asthma	11.1*	(7.3 - 15)	11.0*	(4.3 - 17.6)	10.0	(7.8 - 12.3)	9.2*	(5.7 - 12.7)	8.2	(7.7 - 8.8)	7.3	(6.3 - 8.3)
High Blood Pressure	20.0	(15.9 - 24.2)	53.4	(43.2 - 63.5)	19.8	(17.3 - 22.3)	49.0	(42 - 56)	16.4	(15.8 - 17.1)	47.2	(45.1 - 49.3)

Source: Canadian Community Health Survey (CCHS), 2007  
 Numbers in brackets represent the 95% confidence intervals (CI) around the estimates.  
 \*CCHS estimates are not available for sub-LHIN planning areas. Estimates for Kingston, Frontenac and Lennox & Addington Public Health are used for this profile.  
 -- Because of high sampling variability this estimate is not available  
 \* Value is significantly different than the provincial estimate  
 Estimates are for the population aged 12 or older, unless otherwise indicated.

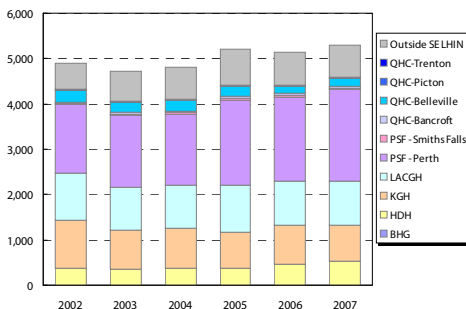
# Sub-LHIN Planning Area Profile (cont'd): Addington, North and Central Frontenac

## Emergency Department Utilization

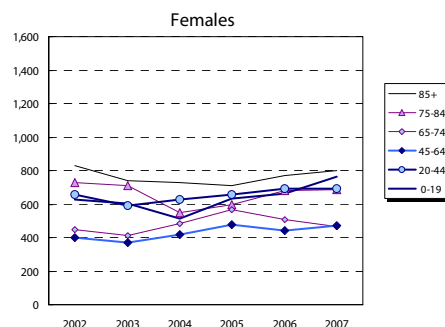
ED Visits by Area Residents by CTAS Level



ED Visits by Institution



Rate (/1,000) of ED Visits by Age Group



Community Support Services (selected)

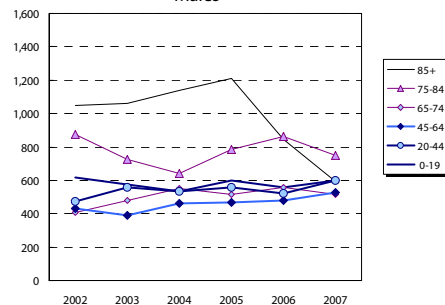
Head Office Location of Provider	Caregiver Support all Services (hours)		Meals on Wheels (meals)		Transportation (1-way trips)	
	2006	2012	2006	2012	2006	2012
Addington N/C Frontenac	1,160	2,015	5,110	2,968	3,130	2,858
Belleville	7,077	12,827	18,800	20,990	5,858	5,715
Brockville	2,590	2,970	14,000	23,111	4,500	8,015
Central Hastings	588	-	4,100	4,867	2,800	3,289
Kingston	5,109	-	125,063	900	900	-
North Hastings	2,600	4,695	4,500	7,573	6,500	9,419
Prince Edward County	3,822	7,503	15,000	27,597	1,525	2,346
Quinte West	26,109	58,984	49,675	128,120	9,380	19,223
Smiths Falls, Perth, Lanark	10,744	8,150	50,860	68,389	30,559	46,063
Tyendinaga Napanee	2,780	1,101	9,500	10,148	13,000	16,205
South East LHIN	62,579	95,927	171,545	285,078	78,152	110,430

Community Care Access Centre (CCAC)

Services	2007/08	2012/13	Change 07-12	
	Actual	Projected	#	%
Admissions	8,251	11,396	3,145	38.1%
In-Home Acute	44,307	43,457	( 850)	(1.9%)
In-Home Maintenance	216,305	228,140	11,835	5.5%
In-Home Rehab	31,389	29,826	(1,563)	(5.0%)
In-Home End-of-Life	14,559	14,177	( 382)	(2.6%)
In-Home LTC	64,034	67,614	3,580	5.6%
Residential	1,406	1,394	( 12)	(0.8%)
<b>Total</b>	<b>372,000</b>	<b>384,608</b>	<b>12,608</b>	<b>3.4%</b>

\*Community Health Centre (CHC) Actual and Projected pending verification with local data management personnel

Rate (/1,000) of ED Visits by Age Group



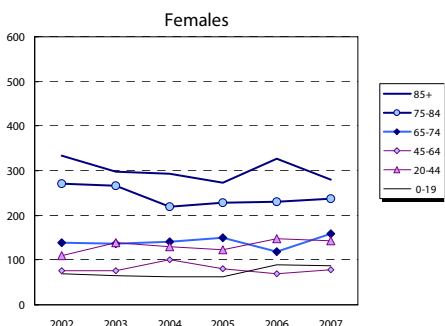
**Homemaking/Personal Supp/Attendant/Respite-Phys Dis Outreach**

Area of Service Provision	2006	2012
Hastings/Prince Edward	34,000	17,616
Frontenac/Leeds Grenville/Lanark	81,972	76,044
South East LHIN	115,972	93,660

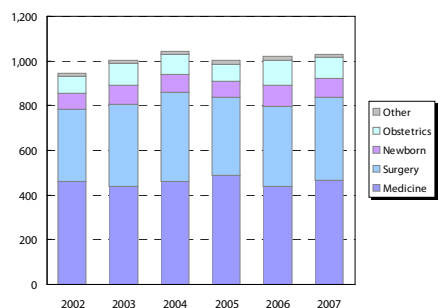
Hospital-based Services

	2007/08 Actual				2012/13 Projected			
	To SELHIN Hospitals	Outside SELHIN	Total	% of Total	To SELHIN Hospitals	Outside SELHIN	Total	% of Total
<b>ER Visits</b>	4,587	708	5,295	100%	5,287	700	5,987	100%
<b>IP Events (Acute Institutions)</b>								
No. of Separations	784	248	1,032	100%	791	7	798	100%
Acute Days of Stay	4,926	1,867	6,793	100%	4,958	32	5,000	100%
ALC <sup>1</sup> Separations	39	6	45	100%	33	( 6)	27	100%
ALC Days of Stay	1,170	84	1,254	100%	845	( 325)	520	100%
<b>Outpatient Events/Clinic Visits</b>								
Surgical/PARR <sup>2</sup>	917	251	1,168	100%	1,247	330	1,577	100%
Oncology Visits	317	43	360	100%	329	12	341	100%
Dialysis Visits	1,101	10	1,111	100%	1,030	( 71)	959	100%
Cardiac Caths	54	11	65	100%	51	( 3)	48	100%
Radiation Treatments	481	96	577	100%	575	94	669	100%
All Outpatient Events	2,870	1,247	4,117	100%	3,231	361	3,592	100%
<b>Rehabilitation</b>								
Cases	10	3	13	100%	8	( 2)	6	100%
Days	259	147	406	100%	203	( 56)	147	100%
<b>Complex Continuing Care</b>								
Cases	10	2	12	100%	12	2	14	100%
Days	233	89.6%	27	10.4%	260	307	567	100%
<b>Adult Mental Health</b>								
Cases	20	-	20	100%	16	( 4)	12	100%
Days	354	-	354	100%	318	( 36)	282	100%

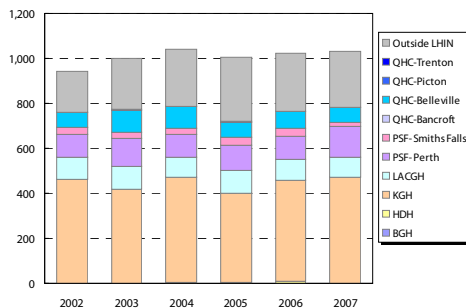
Rate (/1,000) of Inpatient Events by Age Group



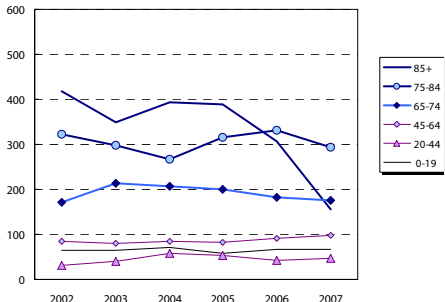
Inpatient Visits by Area Residents by Service Type



Inpatient Visits by Institution



Rate (/1,000) of Inpatient Events by Age Group



## Hospital Inpatient Utilization